

UK Office

Everest Biotech Ltd

Cherwell Innovation Centre
77 Heyford Park
Upper Heyford
Oxfordshire
OX25 5HD
UK

Enquiries:

info@everestbiotech.com

Sales:

sales@everestbiotech.com

Tech support:

support@everestbiotech.com

Tel: +44 (0)1869 238326

www.everestbiotech.com

**Research Use Only. Not for
diagnostic or therapeutic use.**

EB08933 - Goat Anti-SEPT7 Antibody

Size: 100µg specific antibody in 200µl



Target Protein

Principal Names: SEPT7, septin 7, CDC10, CDC3, Nbla02942, SEPT7A, CDC10 (cell division cycle 10, S. cerevisiae, homolog), CDC10 cell division cycle 10 homolog, cell division cycle 10

Official Symbol: Sep-07

Accession Number(s): NP_001779.3; NP_001011553.2; NP_001229885.1

Human GeneID(s): [989](#)

Non-Human GeneID(s): 235072 (mouse), 64551 (rat)

Important Comments: This antibody is expected to recognize all three reported isoforms (NP_001779.3; NP_001011553.2; NP_001229885.1).

Immunogen

Peptide with sequence C-DNNKNKGQLTKSP, from the internal region of the protein sequence according to NP_001779.3; NP_001011553.2; NP_001229885.1.

Please note the [peptide](#) is available for sale.

Purification and Storage

Purified from goat serum by ammonium sulphate precipitation followed by antigen affinity chromatography using the immunizing peptide.

Supplied at 0.5 mg/ml in Tris saline, 0.02% sodium azide, pH7.3 with 0.5% bovine serum albumin.

Aliquot and store at -20°C. Minimize freezing and thawing.

Applications Tested

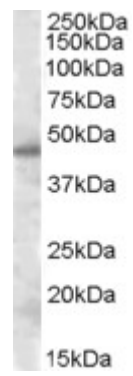
Peptide ELISA: antibody detection limit dilution 1:32000.

Western blot: Approx 45kDa band observed in nuclear lysates of cell line HeLa (calculated MW of 50.7kDa according to NP_001779.3 and of 55.6kDa according to NP_001011553.2). The observed molecular weight corresponds to earlier findings with different antibodies from other commercial sources. Recommended concentration: 0.3-1µg/ml.

Species Reactivity

Tested: Human

Expected from sequence similarity: Human, Mouse, Rat, Dog, Pig, Cow, Horse



EB08933 (0.5 μ g/ml) staining of nuclear HeLa lysate (35 μ g protein in RIPA buffer). Primary incubation was 1 hour. Detected by chemiluminescence.