



## UK Office

### Everest Biotech Ltd

Cherwell Innovation Centre  
77 Heyford Park  
Upper Heyford  
Oxfordshire  
OX25 5HD  
UK

Enquiries:

[info@everestbiotech.com](mailto:info@everestbiotech.com)

Sales:

[sales@everestbiotech.com](mailto:sales@everestbiotech.com)

Tech support:

[support@everestbiotech.com](mailto:support@everestbiotech.com)

Tel: +44 (0)1869 238326

[www.everestbiotech.com](http://www.everestbiotech.com)

**Research Use Only. Not for  
diagnostic or therapeutic use.**

## EB08932-B - Goat Anti-SEPT6, Biotinylated Antibody

Size: 100µg specific antibody in 200µl



### Target Protein

**Principal Names:** SEPT6, septin 6, KIAA0128, MGC16619, MGC20339, SEP2, SEPT2, septin 2

**Official Symbol:** Sep-06

**Accession Number(s):** NP\_665798.1; NP\_055944.2; NP\_665801.1

**Human GeneID(s):** [23157](#)

**Important Comments:** This antibody is expected to recognize the reported isoforms NP\_665798.1, NP\_055944.2 and NP\_665801.1. Reported variants NP\_665799.1 and NP\_665798.1 represent identical protein.

### Immunogen

Peptide with sequence C-DEVNAFKQRKTA., from the internal region of the protein sequence according to NP\_665798.1; NP\_055944.2; NP\_665801.1.

Please note the [peptide](#) is available for sale.

### Purification and Storage

Purified from goat serum by ammonium sulphate precipitation followed by antigen affinity chromatography using the immunizing peptide.

Supplied at 0.5 mg/ml in Tris saline, 0.02% sodium azide, pH7.3 with 0.5% bovine serum albumin.

Aliquot and store at -20°C. Minimize freezing and thawing.

### Applications Tested

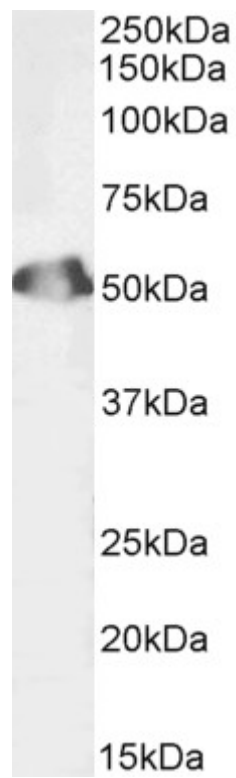
**Peptide ELISA:** antibody detection limit dilution 1:4000.

**Western blot:** Approx 50kDa band observed in Human Testis lysates (calculated MW of 49.7kDa according to NP\_055944.2). Recommended concentration: 0.03-1µg/ml.

### Species Reactivity

**Tested:** Human

**Expected from sequence similarity:** Human, Cow, Dog



Biotinylated EB08932 (1ug/ml) staining of Human Testis lysate (35µg protein in RIPA buffer). Primary incubation was 1 hour. Detected by chemiluminescence, using streptavidin-HRP and using NAP blocker as a substitute for skimmed milk.