

## UK Office

### Everest Biotech Ltd

Cherwell Innovation Centre  
77 Heyford Park  
Upper Heyford  
Oxfordshire  
OX25 5HD  
UK

Enquiries:

[info@everestbiotech.com](mailto:info@everestbiotech.com)

Sales:

[sales@everestbiotech.com](mailto:sales@everestbiotech.com)

Tech support:

[support@everestbiotech.com](mailto:support@everestbiotech.com)

Tel: +44 (0)1869 238326

[www.everestbiotech.com](http://www.everestbiotech.com)

**Research Use Only. Not for  
diagnostic or therapeutic use.**

## EB08931 - Goat Anti-SEPT2 Antibody

Size: 100µg specific antibody in 200µl



### Target Protein

**Principal Names:** SEPT2, septin 2, DIFF6, KIAA0158, NEDD5, Pnutl3, hNedd5, neural precursor cell expressed, developmentally down-regulated 5

**Official Symbol:** SEPT2

**Accession Number(s):** NP\_001008491.1

**Human GeneID(s):** [4735](#)

**Non-Human GeneID(s):** 18000 (mouse), 117515 (rat)

**Important Comments:** Reported variants represent identical protein: NP\_001008492.1, NP\_006146.1, NP\_004395.1, NP\_001008491.1.

### Immunogen

Peptide with sequence SKQQPTQFINPET-C, from the N terminus of the protein sequence according to NP\_001008491.1.

Please note the [peptide](#) is available for sale.

### Purification and Storage

Purified from goat serum by ammonium sulphate precipitation followed by antigen affinity chromatography using the immunizing peptide.

Supplied at 0.5 mg/ml in Tris saline, 0.02% sodium azide, pH7.3 with 0.5% bovine serum albumin.

Aliquot and store at -20°C. Minimize freezing and thawing.

### Applications Tested

**Peptide ELISA:** antibody detection limit dilution 1:32000.

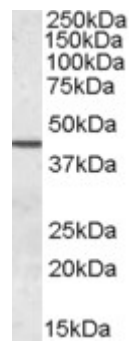
**Western blot:** Approx. 40kDa band observed in Human Testis lysates (calculated MW of 41.5kDa according to NP\_001008491.1). Recommended concentration: 0.05-0.2µg/ml. Primary incubation was 1 hour.

**IHC:** Paraffin embedded Human Breast, Tonsil and Brain (Cortex). Recommended concentration: 2.5µg/ml.

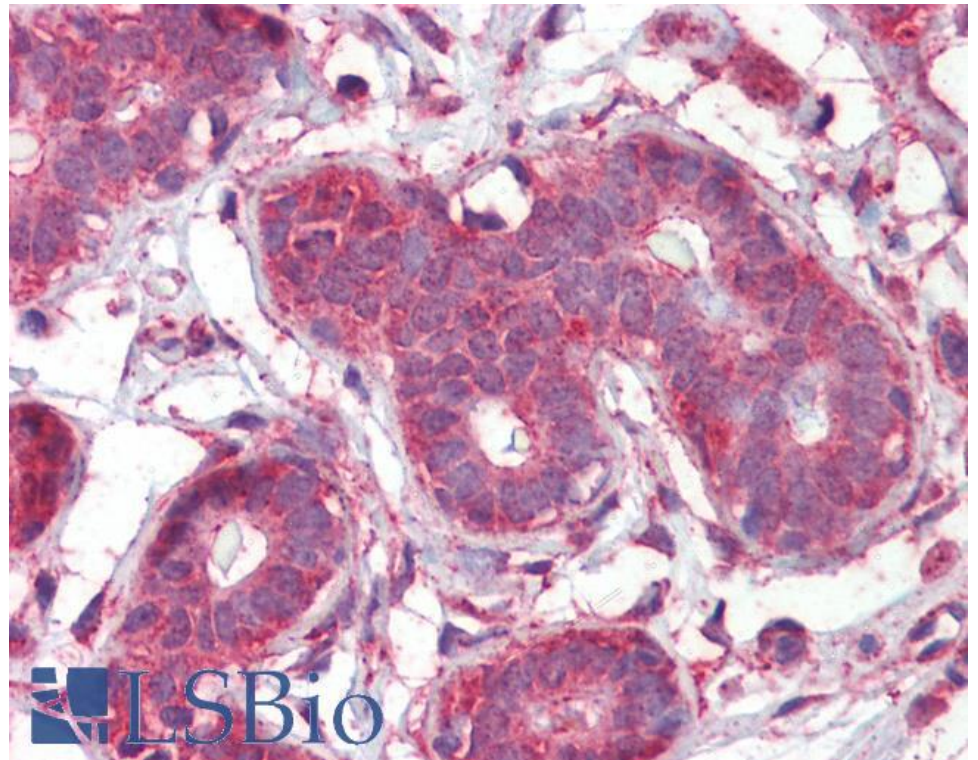
### Species Reactivity

**Tested:** Human

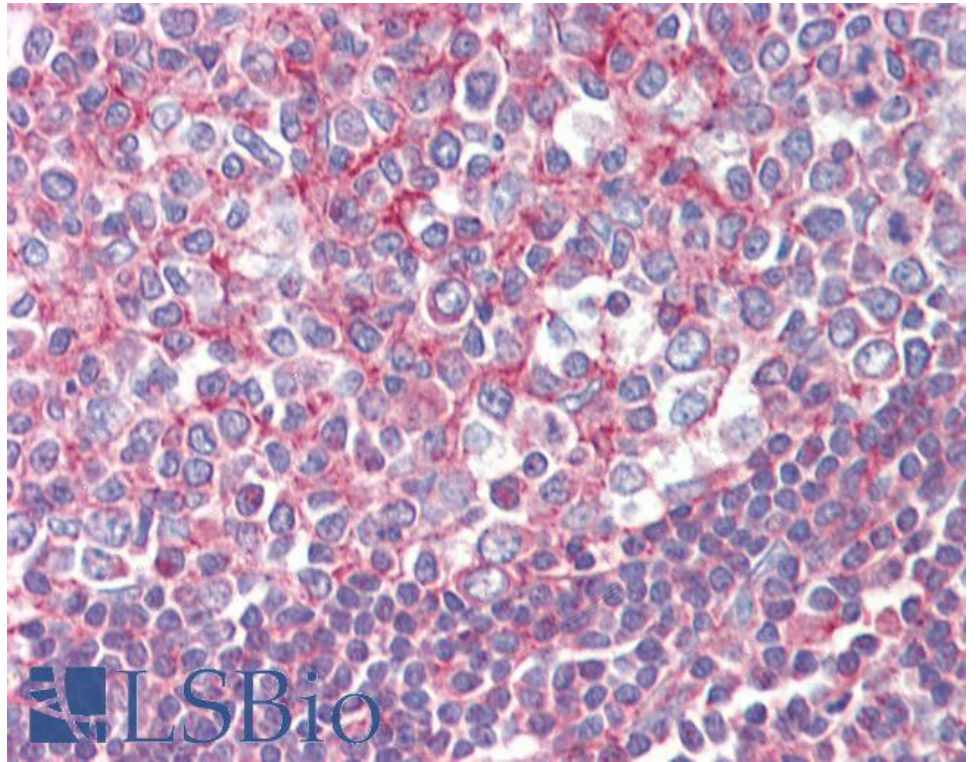
**Expected from sequence similarity:** Human, Mouse, Rat, Cow



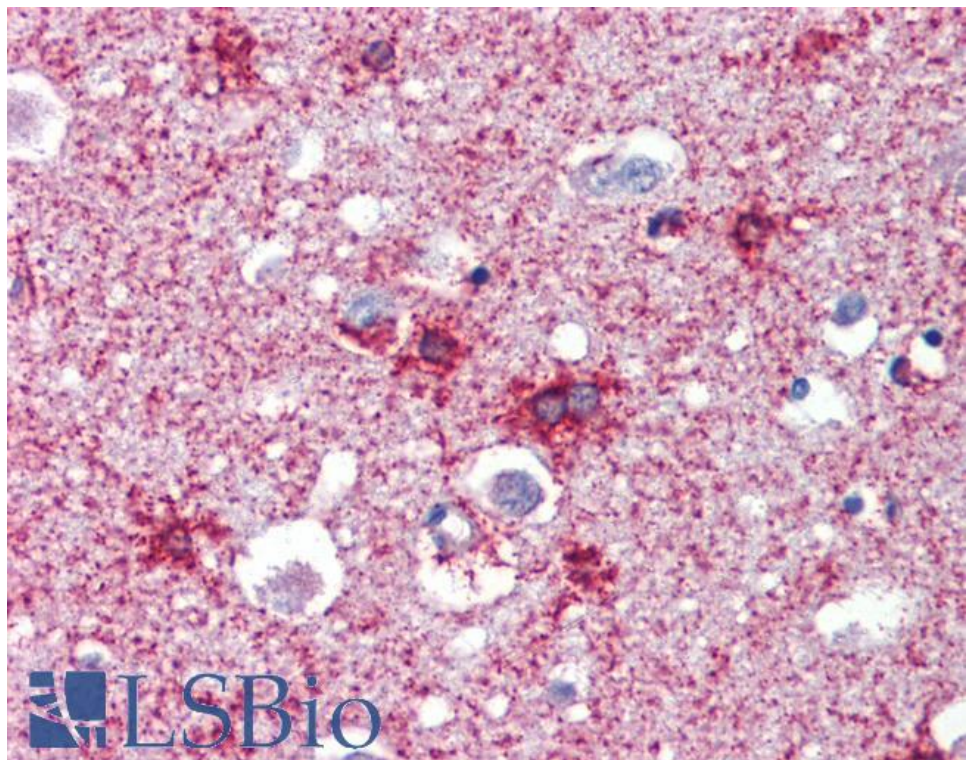
EB08931 (0.05 $\mu$ g/ml) staining of Human Testis lysate (35 $\mu$ g protein in RIPA buffer). Detected by chemiluminescence.



EB08931 (2.5 $\mu$ g/ml) staining of paraffin embedded Human Breast. Steamed antigen retrieval with citrate buffer pH 6, AP-staining.



EB08931 (2.5µg/ml) staining of paraffin embedded Human Tonsil. Steamed antigen retrieval with citrate buffer pH 6, AP-staining.



EB08931 (2.5µg/ml) staining of paraffin embedded Human Cortex. Steamed antigen retrieval with citrate buffer pH 6, AP-staining.