

UK Office

Everest Biotech Ltd

Cherwell Innovation Centre
77 Heyford Park
Upper Heyford
Oxfordshire
OX25 5HD
UK

Enquiries:

info@everestbiotech.com

Sales:

sales@everestbiotech.com

Tech support:

support@everestbiotech.com

Tel: +44 (0)1869 238326

www.everestbiotech.com

**Research Use Only. Not for
diagnostic or therapeutic use.**

EB06868 - Goat Anti-SDHB Antibody

Size: 100µg specific antibody in 200µl



Target Protein

Principal Names: SDHB, IP, SDH, SDH1, SDHIP, succinate dehydrogenase complex, subunit B, iron sulfur (Ip), OTTHUMP00000044624, iron-sulfur subunit, FLJ92337, SDH2, CWS2, PGL4

Official Symbol: SDHB

Accession Number(s): NP_002991.2

Human GeneID(s): [6390](#)

Immunogen

Peptide with sequence C-ATYKEKKASV, from the C Terminus of the protein sequence according to NP_002991.2.

Please note the [peptide](#) is available for sale.

Purification and Storage

Purified from goat serum by ammonium sulphate precipitation followed by antigen affinity chromatography using the immunizing peptide.

Supplied at 0.5 mg/ml in Tris saline, 0.02% sodium azide, pH7.3 with 0.5% bovine serum albumin.

Aliquot and store at -20°C. Minimize freezing and thawing.

Applications Tested

Peptide ELISA: antibody detection limit dilution 1:8000.

Western blot: Approx 28kDa band observed in Human Liver lysates (calculated MW of 31.6kDa according to NP_002991.2). Recommended concentration: 0.03-0.1µg/ml.

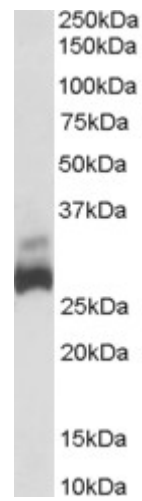
IHC: Paraffin embedded Human Heart. Recommended concentration: 5µg/ml.

ELISA: Customer successfully used this product in quantitative ELISA on HepG2 lysates.

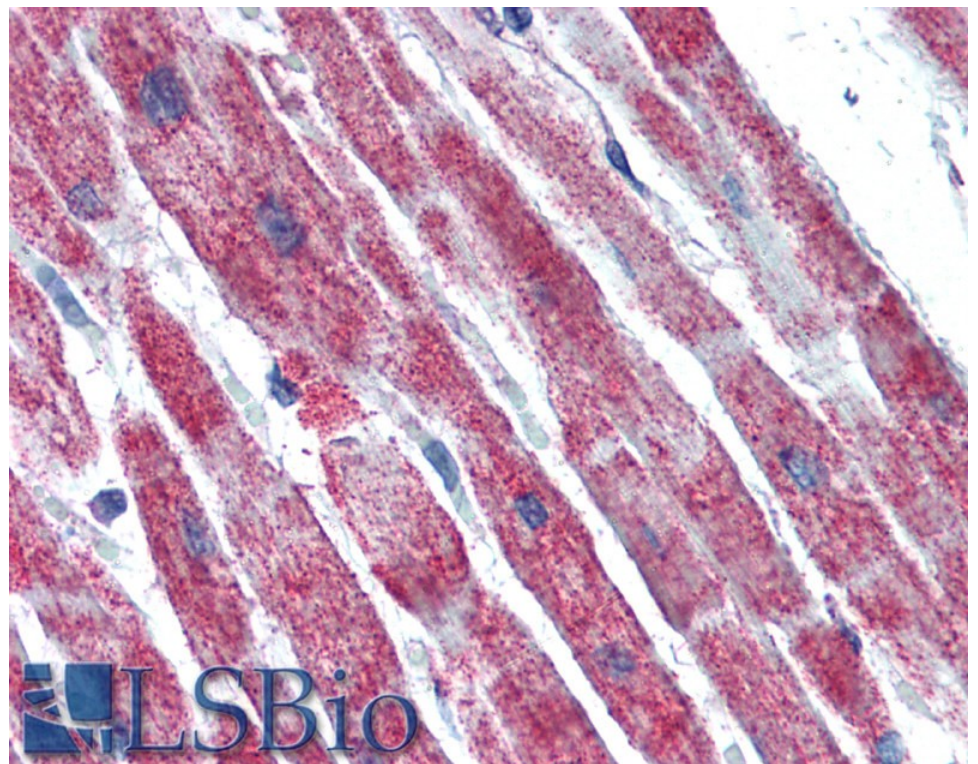
Species Reactivity

Tested: Human

Expected from sequence similarity: Human



EB06868 (0.03 μ g/ml) staining of Human Liver lysate (35 μ g protein in RIPA buffer). Primary incubation was 1 hour. Detected by chemiluminescence.



EB06868 (5 μ g/ml) staining of paraffin embedded Human Heart. Steamed antigen retrieval with citrate buffer pH 6, AP-staining.