

## UK Office

### Everest Biotech Ltd

Cherwell Innovation Centre  
77 Heyford Park  
Upper Heyford  
Oxfordshire  
OX25 5HD  
UK

Enquiries:

[info@everestbiotech.com](mailto:info@everestbiotech.com)

Sales:

[sales@everestbiotech.com](mailto:sales@everestbiotech.com)

Tech support:

[support@everestbiotech.com](mailto:support@everestbiotech.com)

Tel: +44 (0)1869 238326

[www.everestbiotech.com](http://www.everestbiotech.com)

**Research Use Only. Not for  
diagnostic or therapeutic use.**

## EB08952 - Goat Anti-SCNN1D Antibody

Size: 100µg specific antibody in 200µl



### Target Protein

**Principal Names:** SCNN1D, sodium channel, nonvoltage-gated 1, delta, ENaCd, ENaCdelta, MGC149710, MGC149711, SCNED, dNaCh, sodium channel nonvoltage-gated 1 delta, sodium channel, voltage-gated, type I, delta polypeptide

**Official Symbol:** SCNN1D

**Accession Number(s):** NP\_002969.2

**Human GeneID(s):** [6339](#)

### Immunogen

Peptide with sequence C-AGPQPLETLDT, from the C Terminus of the protein sequence according to NP\_002969.2.

Please note the [peptide](#) is available for sale.

### Purification and Storage

Purified from goat serum by ammonium sulphate precipitation followed by antigen affinity chromatography using the immunizing peptide.

Supplied at 0.5 mg/ml in Tris saline, 0.02% sodium azide, pH7.3 with 0.5% bovine serum albumin.

Aliquot and store at -20°C. Minimize freezing and thawing.

### Applications Tested

**Peptide ELISA:** antibody detection limit dilution 1:16000.

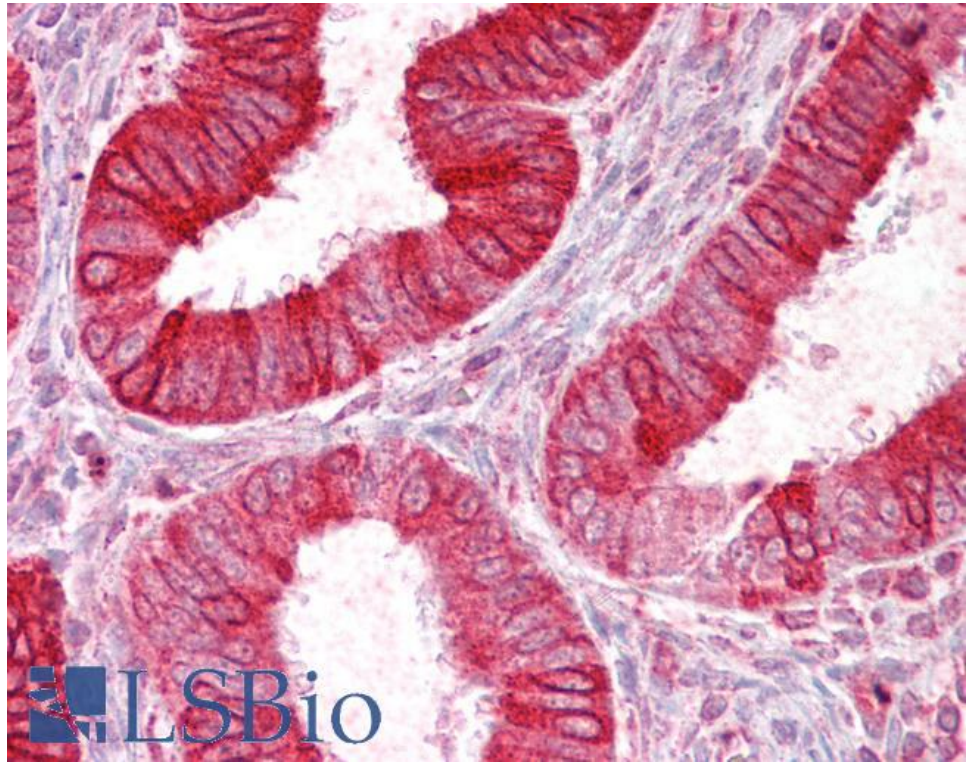
**Western blot:** Preliminary experiments in Human Pancreas and Thymus lysates gave no specific signal but low background (at antibody concentration up to 1µg/ml).

**IHC:** Paraffin embedded Human Uterus. Recommended concentration: 2.5µg/ml.

### Species Reactivity

**Tested:** Human

**Expected from sequence similarity:** Human



EB08952 (2.5µg/ml) staining of paraffin embedded Human Uterus. Steamed antigen retrieval with citrate buffer pH 6, AP-staining.