



UK Office

Everest Biotech Ltd

Cherwell Innovation Centre
77 Heyford Park
Upper Heyford
Oxfordshire
OX25 5HD
UK

Enquiries:

info@everestbiotech.com

Sales:

sales@everestbiotech.com

Tech support:

support@everestbiotech.com

Tel: +44 (0)1869 238326

www.everestbiotech.com

**Research Use Only. Not for
diagnostic or therapeutic use.**

EB07773 - Goat Anti-ROBO3 / RIG1 (internal) Antibody

Size: 100µg specific antibody in 200µl



Target Protein

Principal Names: ROBO3, RIG1, roundabout, axon guidance receptor, homolog 3 (Drosophila), FLJ21044, HGPPS, RBIG1, retinoblastoma inhibiting gene 1, roundabout, axon guidance receptor, homolog 3

Official Symbol: ROBO3

Accession Number(s): NP_071765.2

Human GeneID(s): [64221](#)

Immunogen

Peptide with sequence C-RRKQRKELSHYT, from the internal region of the protein sequence according to NP_071765.2.

Please note the [peptide](#) is available for sale.

Purification and Storage

Purified from goat serum by ammonium sulphate precipitation followed by antigen affinity chromatography using the immunizing peptide.

Supplied at 0.5 mg/ml in Tris saline, 0.02% sodium azide, pH7.3 with 0.5% bovine serum albumin.

Aliquot and store at -20°C. Minimize freezing and thawing.

Applications Tested

Peptide ELISA: antibody detection limit dilution 1:32000.

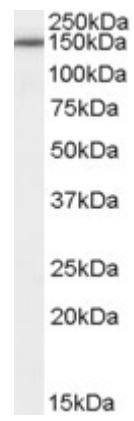
Western blot: Approx 150kDa band observed in Human Brain (Cerebellum and Hippocampus) lysates (calculated MW of 148kDa according to NP_071765.2).

Recommended concentration: 0.5-1µg/ml.

Species Reactivity

Tested: Human

Expected from sequence similarity: Human, Dog, Pig, Cow



EB07773 (0.5µg/ml) staining of Human Brain (Cerebellum) lysate (35µg protein in RIPA buffer). Primary incubation was 1 hour. Detected by chemiluminescence.