

UK Office

Everest Biotech Ltd

Cherwell Innovation Centre
77 Heyford Park
Upper Heyford
Oxfordshire
OX25 5HD
UK

Enquiries:

info@everestbiotech.com

Sales:

sales@everestbiotech.com

Tech support:

support@everestbiotech.com

Tel: +44 (0)1869 238326

www.everestbiotech.com

**Research Use Only. Not for
diagnostic or therapeutic use.**

EB05820 - Goat Anti-RNF39 / LIRF Antibody

Size: 100µg specific antibody in 200µl



Target Protein

Principal Names: RNF39, LIRF, ring finger protein 39, HZFW1, HZFw1 protein, LTP (long-term potentiation) induced RING finger protein, DADB-60O11.8, HZF, HZFW

Official Symbol: RNF39

Accession Number(s): NP_079512.1; NP_739575.1

Human GeneID(s): [80352](#)

Non-Human GeneID(s): 171387 (rat)

Important Comments: This antibody is expected to recognize 2 of the 3 reported isoforms (NP_079512.1 and NP_739575.1 but not NP_739576.1)

Immunogen

Peptide with sequence CDPRAPLRIVPAES, from the C Terminus of the protein sequence according to NP_079512.1; NP_739575.1.

Please note the [peptide](#) is available for sale.

Purification and Storage

Purified from goat serum by ammonium sulphate precipitation followed by antigen affinity chromatography using the immunizing peptide.

Supplied at 0.5 mg/ml in Tris saline, 0.02% sodium azide, pH7.3 with 0.5% bovine serum albumin.

Aliquot and store at -20°C. Minimize freezing and thawing.

Applications Tested

Peptide ELISA: antibody detection limit dilution 1:16000.

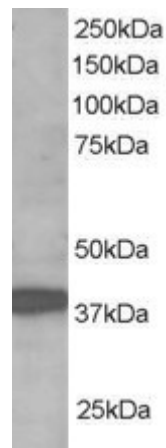
Western blot: Approx 40kDa band observed in Human Brain lysates (predicted MWs of 41kDa and 48kDa according to NP_079512.1 and NP_739575.1). Recommended for use at 1-3µg/ml.

IHC: Paraffin embedded Human Small Intestine. Recommended concentration: 10µg/ml.

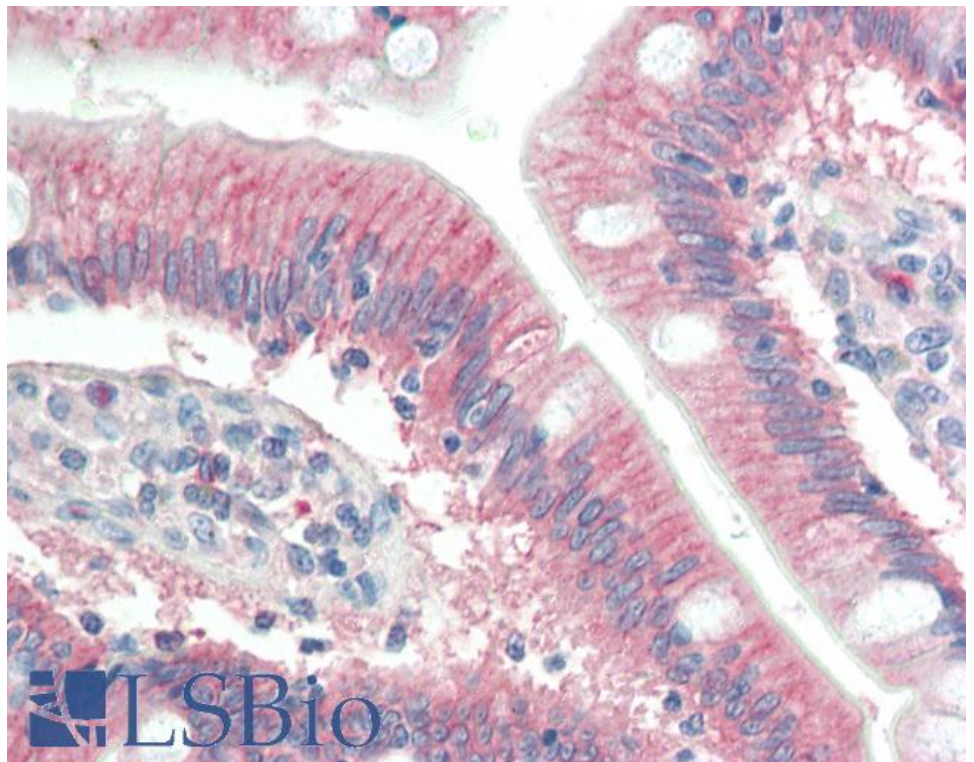
Species Reactivity

Tested: Human

Expected from sequence similarity: Human, Rat, Pig



EB05820 staining (1 μ g/ml) of Human Brain lysate (RIPA buffer, 35 μ g total protein per lane). Primary incubated for 1 hour. Detected by chemiluminescence.



EB05820 (10 μ g/ml) staining of paraffin embedded Human Small Intestine. Steamed antigen retrieval with citrate buffer pH 6, AP-staining.