

UK Office

Everest Biotech Ltd

Cherwell Innovation Centre
77 Heyford Park
Upper Heyford
Oxfordshire
OX25 5HD
UK

Enquiries:

info@everestbiotech.com

Sales:

sales@everestbiotech.com

Tech support:

support@everestbiotech.com

Tel: +44 (0)1869 238326

www.everestbiotech.com

**Research Use Only. Not for
diagnostic or therapeutic use.**

EB07610 - Goat Anti-RNF213 / C17orf27 (internal) Antibody

Size: 100µg specific antibody in 200µl



Target Protein

Principal Names: ring finger protein 213, RNF213, C17orf27, chromosome 17 open reading frame 27, KIAA1554

Official Symbol: RNF213

Accession Number(s): NP_065965.3

Human GeneID(s): [57674](#)

Immunogen

Peptide with sequence C-KNPQTQTEERFRPQ, from the internal region of the protein sequence according to NP_065965.3.

Please note the [peptide](#) is available for sale.

Purification and Storage

Purified from goat serum by ammonium sulphate precipitation followed by antigen affinity chromatography using the immunizing peptide.

Supplied at 0.5 mg/ml in Tris saline, 0.02% sodium azide, pH7.3 with 0.5% bovine serum albumin.

Aliquot and store at -20°C. Minimize freezing and thawing.

Applications Tested

Peptide ELISA: antibody detection limit dilution 1:128000.

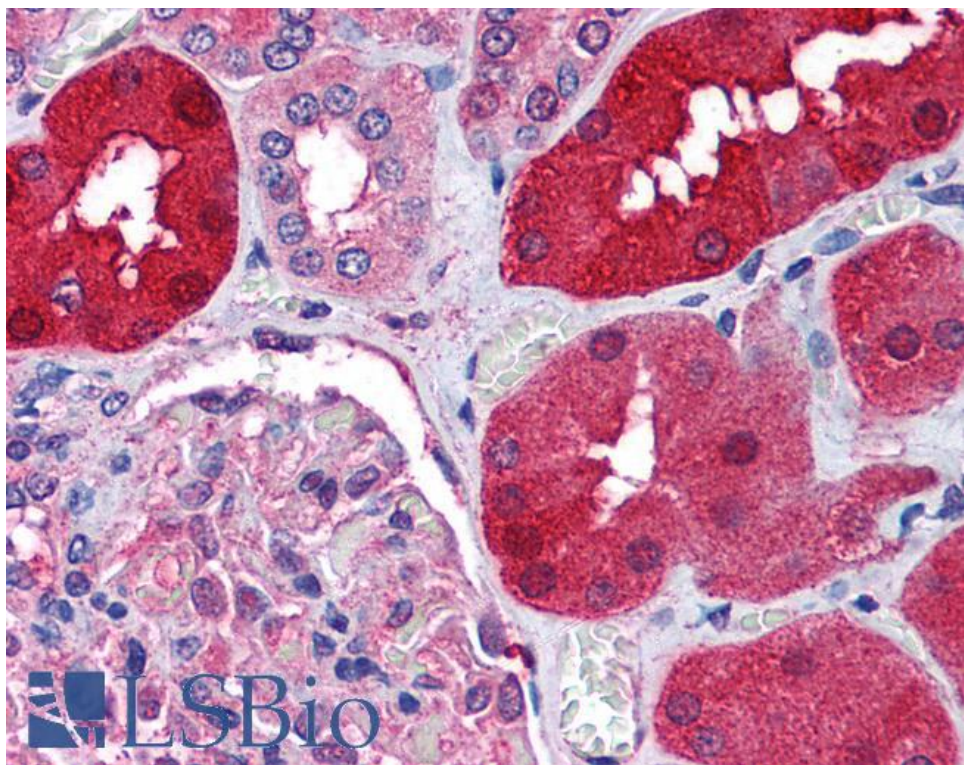
Western blot: Not yet tested - our routinely used western blotting protocol does not allow detection of proteins as large as the calculated size of 374kDa according to NP_065965.3. Therefore we cannot recommend an optimal concentration.

IHC: Paraffin embedded Human Kidney. Recommended concentration: 1.25µg/ml.

Species Reactivity

Tested: Human

Expected from sequence similarity: Human



EB07610 (1.25µg/ml) staining of paraffin embedded Human Kidney. Steamed antigen retrieval with citrate buffer pH 6, AP-staining.