

## UK Office

### Everest Biotech Ltd

Cherwell Innovation Centre  
77 Heyford Park  
Upper Heyford  
Oxfordshire  
OX25 5HD  
UK

Enquiries:

[info@everestbiotech.com](mailto:info@everestbiotech.com)

Sales:

[sales@everestbiotech.com](mailto:sales@everestbiotech.com)

Tech support:

[support@everestbiotech.com](mailto:support@everestbiotech.com)

Tel: +44 (0)1869 238326

[www.everestbiotech.com](http://www.everestbiotech.com)

**Research Use Only. Not for  
diagnostic or therapeutic use.**

## EB09878 - Goat Anti-REL Antibody

Size: 100µg specific antibody in 200µl



### Target Protein

**Principal Names:** C-Rel, C-Rel proto-oncogene protein, oncogene REL, avian reticuloendotheliosis, v-rel avian reticuloendotheliosis viral oncogene homolog, v-rel reticuloendotheliosis viral oncogene homolog, v-rel reticuloendotheliosis viral oncogene homolog (avian), REL

**Official Symbol:** REL

**Accession Number(s):** NP\_002899.1

**Human GeneID(s):** [5966](#)

### Immunogen

Peptide with sequence NDLNASNACIYN, from the internal region of the protein sequence according to NP\_002899.1.

Please note the [peptide](#) is available for sale.

### Purification and Storage

Purified from goat serum by ammonium sulphate precipitation followed by antigen affinity chromatography using the immunizing peptide.

Supplied at 0.5 mg/ml in Tris saline, 0.02% sodium azide, pH7.3 with 0.5% bovine serum albumin.

Aliquot and store at -20°C. Minimize freezing and thawing.

### Applications Tested

**Peptide ELISA:** antibody detection limit dilution 1:16000.

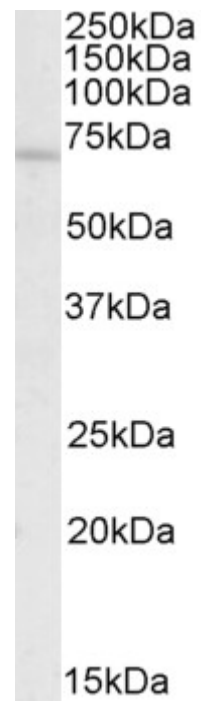
**Western blot:** Approx 70kDa band observed in Human Spleen and Human Peripheral Blood Mononucleocytes lysates (calculated MW of 68.5kDa according to NP\_002899.1). Recommended concentration: 0.5-2µg/ml. Primary incubation was 1 hour.

**IHC:** Paraffin embedded Human Thymus. Recommended concentration: 2.5µg/ml.

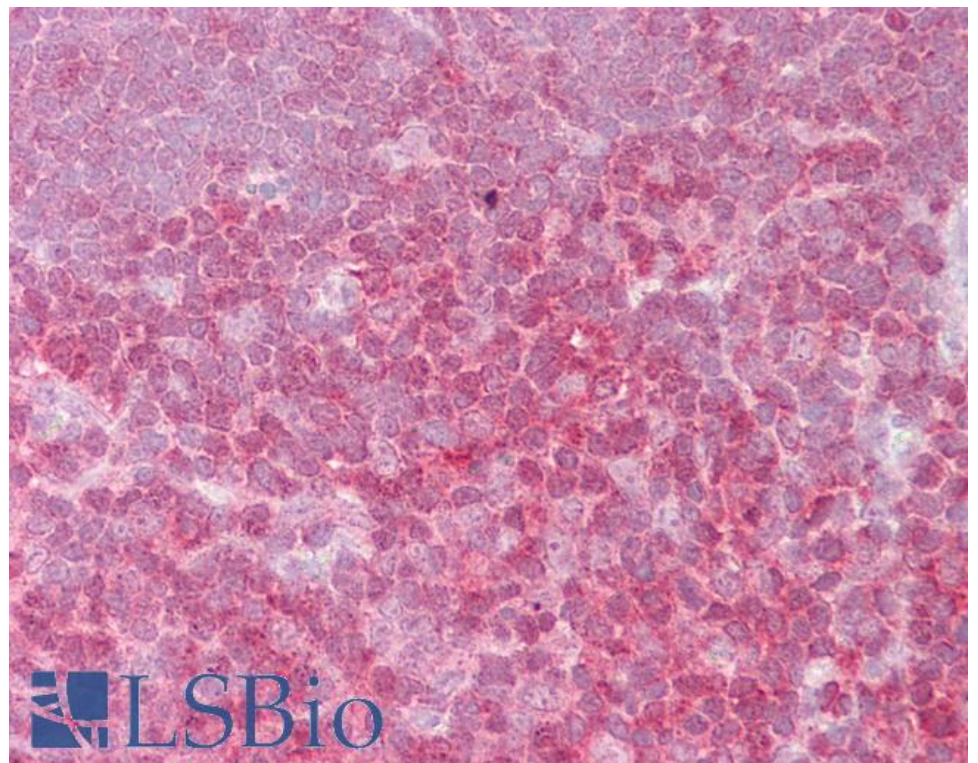
### Species Reactivity

**Tested:** Human

**Expected from sequence similarity:** Human



EB09878 (0.5 $\mu$ g/ml) staining of Human Spleen lysate (35 $\mu$ g protein in RIPA buffer). Detected by chemiluminescence.



EB09879 (2.5 $\mu$ g/ml) staining of paraffin embedded Human Thymus. Steamed antigen retrieval with citrate buffer pH 6, AP-staining.