

UK Office

Everest Biotech Ltd

Cherwell Innovation Centre
77 Heyford Park
Upper Heyford
Oxfordshire
OX25 5HD
UK

Enquiries:

info@everestbiotech.com

Sales:

sales@everestbiotech.com

Tech support:

support@everestbiotech.com

Tel: +44 (0)1869 238326

www.everestbiotech.com

**Research Use Only. Not for
diagnostic or therapeutic use.**

EB10078 - Goat Anti-RDH5 (aa 19-31) Antibody

Size: 100µg specific antibody in 200µl



Target Protein

Principal Names: 11-cis RDH, 9-cis-retinol specific dehydrogenase, FLJ39337, FLJ97089, HSD17B9, RDH1, retinol dehydrogenase 1, retinol dehydrogenase 5 (11-cis and 9-cis), retinol dehydrogenase 5 (11-cis/9-cis), SDR9C5, short chain dehydrogenase/reductase family 9C,, RDH5

Official Symbol: RDH5

Accession Number(s): NP_002896.2

Human GeneID(s): [5959](#)

Non-Human GeneID(s): 19682 (mouse)

Immunogen

Peptide with sequence C-RDRQSLPASNAFV, from the internal region of the protein sequence according to NP_002896.2.

Please note the [peptide](#) is available for sale.

Purification and Storage

Purified from goat serum by ammonium sulphate precipitation followed by antigen affinity chromatography using the immunizing peptide.

Supplied at 0.5 mg/ml in Tris saline, 0.02% sodium azide, pH7.3 with 0.5% bovine serum albumin.

Aliquot and store at -20°C. Minimize freezing and thawing.

Applications Tested

Peptide ELISA: antibody detection limit dilution 1:8000.

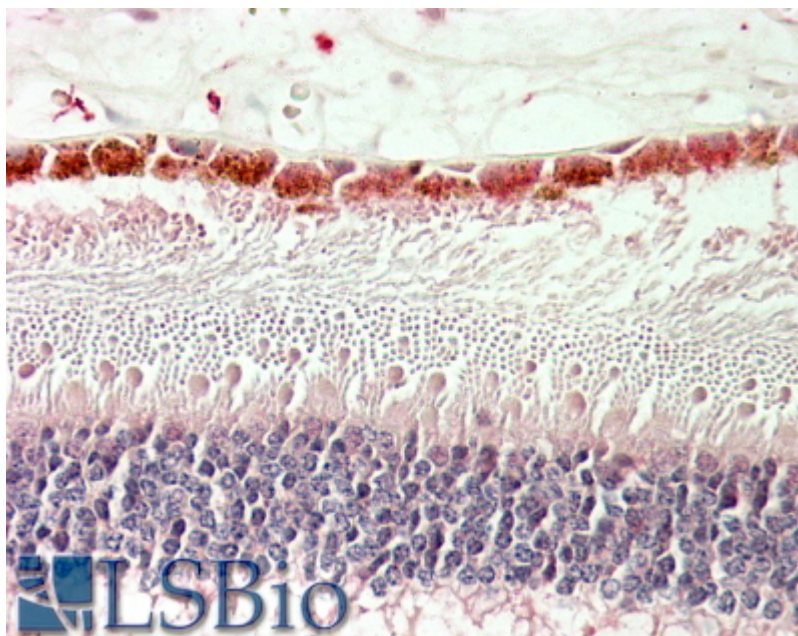
Western blot: Approx 35kDa band observed in Mouse Eye lysates (calculated MW of 34.8kDa according to Mouse NP_598767.1). Recommended concentration: 2-4µg/ml.

IHC: In paraffin embedded Human Retina shows staining of the Ganglion Cell Layer. Recommended concentration, 5-10µg/ml.

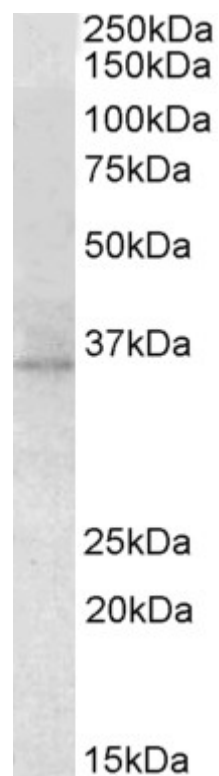
Species Reactivity

Tested: Human, Mouse

Expected from sequence similarity: Human, Mouse, Dog



EB10078 (5µg/ml) staining of paraffin embedded Human Retina. Steamed antigen retrieval with citrate buffer pH 6, AP-staining.



EB10078 (2µg/ml) staining of Mouse Eye lysate (35µg protein in RIPA buffer). Primary incubation was 1 hour. Detected by chemiluminescence.