

UK Office

Everest Biotech Ltd

Cherwell Innovation Centre
77 Heyford Park
Upper Heyford
Oxfordshire
OX25 5HD
UK

Enquiries:

info@everestbiotech.com

Sales:

sales@everestbiotech.com

Tech support:

support@everestbiotech.com

Tel: +44 (0)1869 238326

www.everestbiotech.com

**Research Use Only. Not for
diagnostic or therapeutic use.**

EB08394 - Goat Anti-RASSF6 Antibody

Size: 100µg specific antibody in 200µl



Target Protein

Principal Names: RASSF6, Ras association (RalGDS/AF-6) domain family 6, DKFZp686K23225, putative RAS binding protein

Official Symbol: RASSF6

Accession Number(s): NP_803876.1; NP_958834.1

Human GeneID(s): [166824](#)

Important Comments: This antibody is expected to recognise both reported isoforms (NP_803876.1; NP_958834.1).

Immunogen

Peptide with sequence C-SNTLKPHAKDEPDS, from the internal region of the protein sequence according to NP_803876.1; NP_958834.1.

Please note the [peptide](#) is available for sale.

Purification and Storage

Purified from goat serum by ammonium sulphate precipitation followed by antigen affinity chromatography using the immunizing peptide.

Supplied at 0.5 mg/ml in Tris saline, 0.02% sodium azide, pH7.3 with 0.5% bovine serum albumin.

Aliquot and store at -20°C. Minimize freezing and thawing.

Applications Tested

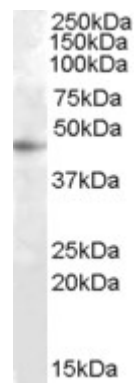
Peptide ELISA: antibody detection limit dilution 1:16000.

Western blot: Approx 45kDa band observed in lysates of cell line HepG2 (calculated MW of 43.4kDa according to NP_958834.1). Recommended concentration: 1-3µg/ml.

Species Reactivity

Tested: Human

Expected from sequence similarity: Human



EB08394 (1µg/ml) staining of HepG2 cell lysate (35µg protein in RIPA buffer). Primary incubation was 1 hour.
Detected by chemiluminescence.