

UK Office

Everest Biotech Ltd

Cherwell Innovation Centre
77 Heyford Park
Upper Heyford
Oxfordshire
OX25 5HD
UK

Enquiries:

info@everestbiotech.com

Sales:

sales@everestbiotech.com

Tech support:

support@everestbiotech.com

Tel: +44 (0)1869 238326

www.everestbiotech.com

**Research Use Only. Not for
diagnostic or therapeutic use.**

EB06672 - Goat Anti-RARA Antibody

Size: 100µg specific antibody in 200µl



Target Protein

Principal Names: RARA, RAR, NR1B1, retinoic acid receptor, alpha, Retinoic acid receptor, alpha polypeptide, nucleophosmin-retinoic acid receptor alpha fusion protein NPM-RAR long form, nucleophosmin-retinoic acid receptor alpha fusion protein NPM-RAR short form

Official Symbol: RARA

Accession Number(s): NP_000955.1; NP_001138773.1; NP_001019980.1; NP_001138774.1

Human GeneID(s): [5914](#)

Important Comments: This antibody is expected to recognize all three reported isoforms (NP_000955.1; NP_001019980.1; NP_001138774.1). Please note the epitope is from the mouse/rat sequence. Human sequence is SPSLSPSSNRSSPATHSP and thus highly similar. Reported variants NP_000955.1 and NP_001138773.1 represent identical proteins.

Immunogen

Peptide with sequence C-SPSLSPSSHRSSPATQSP, from the C Terminus of the protein sequence according to NP_000955.1; NP_001138773.1; NP_001019980.1; NP_001138774.1.

Please note the [peptide](#) is available for sale.

Purification and Storage

Purified from goat serum by ammonium sulphate precipitation followed by antigen affinity chromatography using the immunizing peptide.

Supplied at 0.5 mg/ml in Tris saline, 0.02% sodium azide, pH7.3 with 0.5% bovine serum albumin.

Aliquot and store at -20°C. Minimize freezing and thawing.

Applications Tested

Peptide ELISA: antibody detection limit dilution 1:8000.

Western blot: Approx 50kDa band observed in Human Brain (Cerebellum) lysates (calculated MW of 50.8kDa according to NP_000955.1; NP_001019980.1).

Recommended concentration: 1-3µg/ml. Primary incubation was 1 hour.

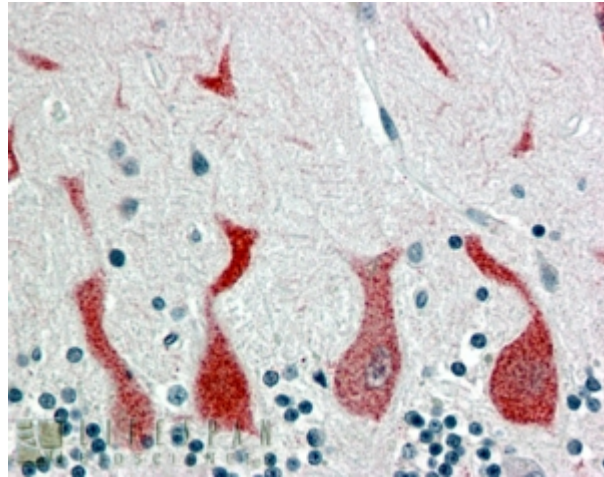
Species Reactivity

Tested: Human

Expected from sequence similarity: Human, Mouse, Rat, Dog, Cow



EB06672 (0.05µg/ml) staining of Human Cerebellum lysate (35µg protein in RIPA buffer). Detected by chemiluminescence.



EB06672 (4µg/ml) staining of paraffin embedded Human Cerebellum. Steamed antigen retrieval with citrate buffer pH 6, AP-staining. **This data is from a previous batch, not on sale.**