

UK Office

Everest Biotech Ltd

Cherwell Innovation Centre
77 Heyford Park
Upper Heyford
Oxfordshire
OX25 5HD
UK

Enquiries:

info@everestbiotech.com

Sales:

sales@everestbiotech.com

Tech support:

support@everestbiotech.com

Tel: +44 (0)1869 238326

www.everestbiotech.com

**Research Use Only. Not for
diagnostic or therapeutic use.**

EB07306 - Goat Anti-Radixin Antibody

Size: 100µg specific antibody in 200µl



Target Protein

Principal Names: RDX, radixin

Official Symbol: RDX

Accession Number(s): NP_002897.1

Human GeneID(s): [5962](#)

Non-Human GeneID(s): 19684 (mouse), 315655 (rat)

Immunogen

Peptide with sequence C-QARDETKKTQND, from the internal region of the protein sequence according to NP_002897.1.

Please note the [peptide](#) is available for sale.

Purification and Storage

Purified from goat serum by ammonium sulphate precipitation followed by antigen affinity chromatography using the immunizing peptide.

Supplied at 0.5 mg/ml in Tris saline, 0.02% sodium azide, pH7.3 with 0.5% bovine serum albumin.

Aliquot and store at -20°C. Minimize freezing and thawing.

Applications Tested

Peptide ELISA: antibody detection limit dilution 1:4000.

Western blot: Approx 80kDa band observed in Human Lymph Node, Tonsil and Spleen lysates (calculated MW of 68.6kDa according to NP_002897.1). The same 80kDa was also observed in lysates of several Mouse and Rat tissues and in lysates of cell lines NIH3T3, HeLa, Jurkat, and A431. The observed molecular weight corresponds to earlier findings in literature (Magendantz et al, J Biol Chem. 1995 Oct 27;270(43):25324-7. PMID: 7592691). Recommended concentration: 0.01-0.03µg/ml. Primary incubation was 1 hour.

IHC: Paraffin embedded Human Placenta and Kidney. Recommended concentration: 2.5µg/ml.

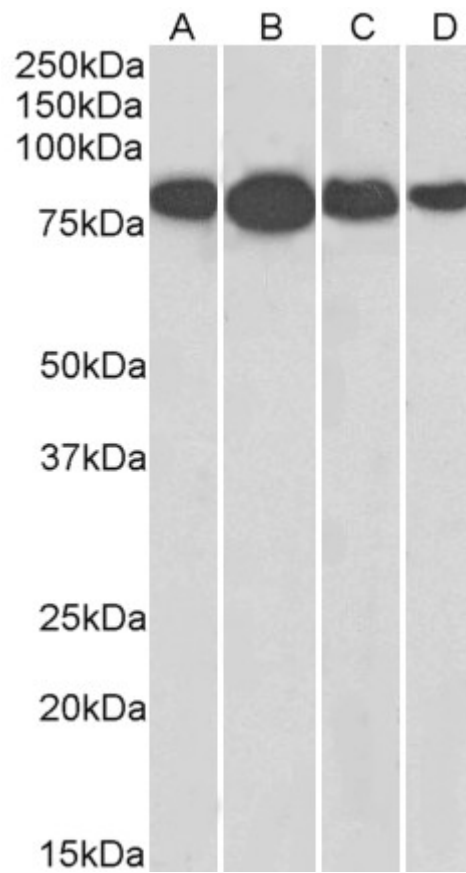
Species Reactivity

Tested: Human, Mouse, Rat

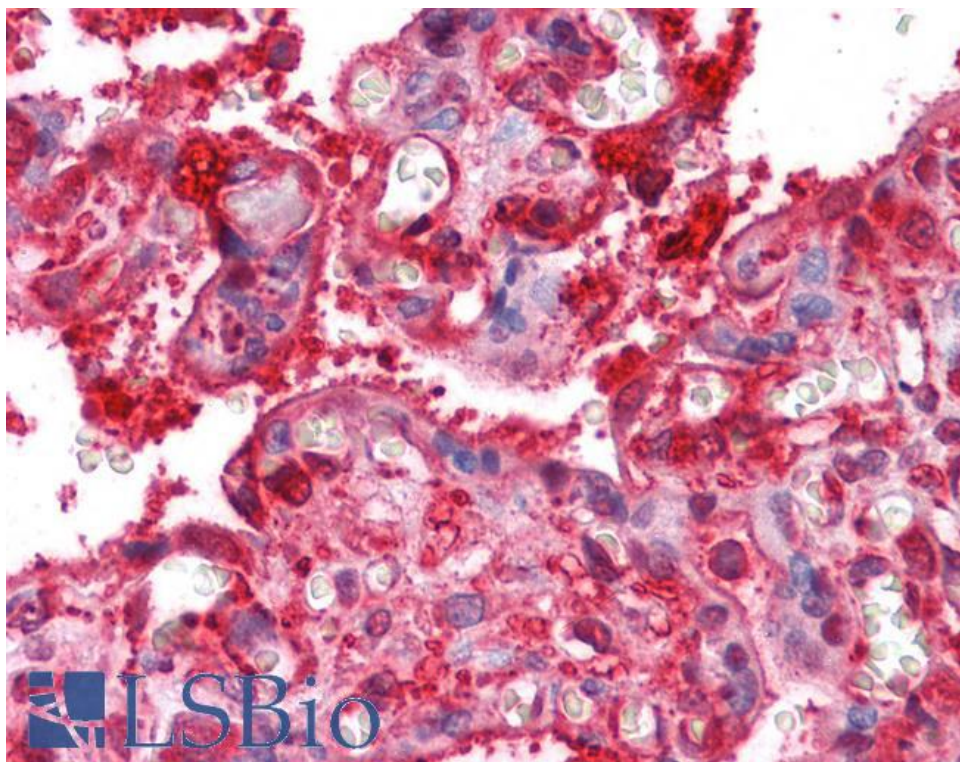
Expected from sequence similarity: Human, Mouse, Rat, Dog



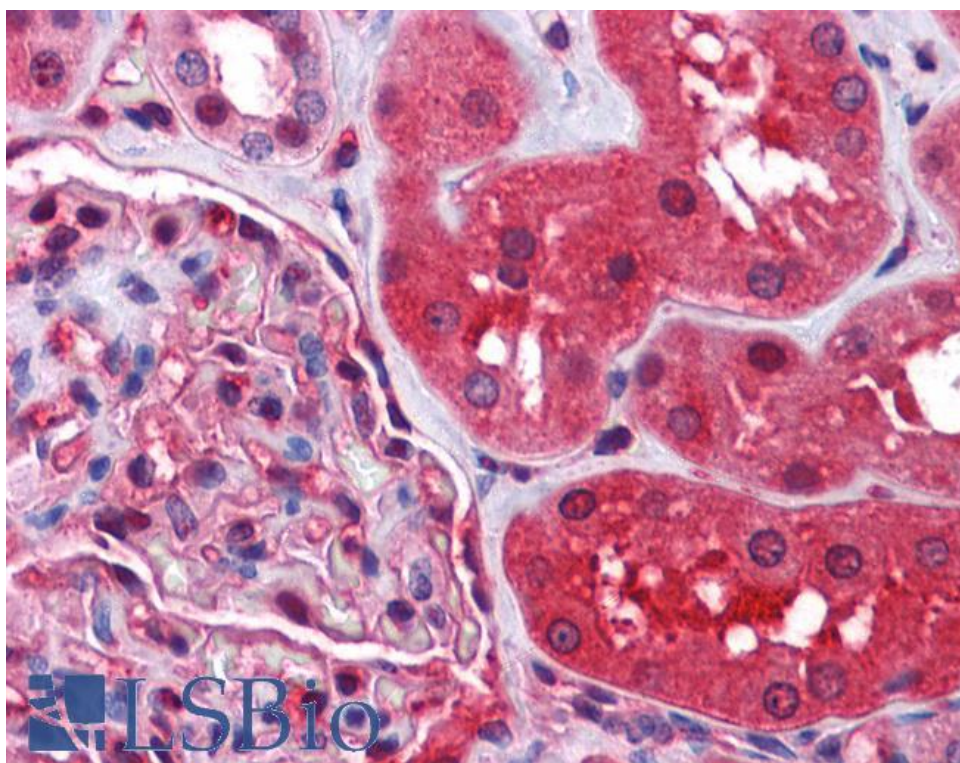
EB07306 (0.03 μ g/ml) staining of Human Tonsil lysate (35 μ g protein in RIPA buffer). Detected by chemiluminescence.



EB07306 (0.01 μ g/ml) staining of NIH3T3 (A), HeLa (B), Jurkat (C), and A431 (D) lysates (35 μ g protein in RIPA buffer). Detected by chemiluminescence.



EB07306 (2.5µg/ml) staining of paraffin embedded Human Placenta. Steamed antigen retrieval with citrate buffer pH 6, AP-staining.



EB07306 (2.5µg/ml) staining of paraffin embedded Human Kidney. Steamed antigen retrieval with citrate buffer pH 6, AP-staining.