

UK Office

Everest Biotech Ltd

Cherwell Innovation Centre
77 Heyford Park
Upper Heyford
Oxfordshire
OX25 5HD
UK

Enquiries:

info@everestbiotech.com

Sales:

sales@everestbiotech.com

Tech support:

support@everestbiotech.com

Tel: +44 (0)1869 238326

www.everestbiotech.com

**Research Use Only. Not for
diagnostic or therapeutic use.**

EB05030 - Goat Anti-RAB2 / RAB2A Antibody

Size: 100µg specific antibody in 200µl



Target Protein

Principal Names: RAB2, RAB2A, member RAS oncogene family, RAB2, member RAS oncogene family, GTP binding protein RAB2A

Official Symbol: RAB2A

Accession Number(s): NP_002856.1

Human GeneID(s): [5862](#)

Non-Human GeneID(s): 59021 (mouse), 65158 (rat)

Immunogen

Peptide with sequence HAGNQGGQQAGGGCC, from the C Terminus of the protein sequence according to NP_002856.1.

Please note the [peptide](#) is available for sale.

Purification and Storage

Purified from goat serum by ammonium sulphate precipitation followed by antigen affinity chromatography using the immunizing peptide.

Supplied at 0.5 mg/ml in Tris saline, 0.02% sodium azide, pH7.3 with 0.5% bovine serum albumin.

Aliquot and store at -20°C. Minimize freezing and thawing.

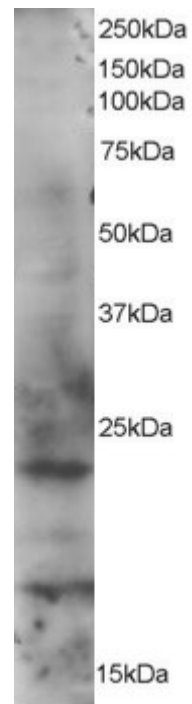
Applications Tested

Western blot: Approx 23kDa and 18kDa bands seen in HeLa cell lysates. Recommended for use at 1-3µg/ml.

Species Reactivity

Tested: Human

Expected from sequence similarity: Human, Mouse, Rat, Pig, Cow



EB05030 staining (1 μ g/ml) of HeLa lysate (RIPA buffer, 35 μ g total protein per lane). Primary incubated for 1 hour. Detected by western blot using chemiluminescence.