

## UK Office

### Everest Biotech Ltd

Cherwell Innovation Centre  
77 Heyford Park  
Upper Heyford  
Oxfordshire  
OX25 5HD  
UK

Enquiries:

[info@everestbiotech.com](mailto:info@everestbiotech.com)

Sales:

[sales@everestbiotech.com](mailto:sales@everestbiotech.com)

Tech support:

[support@everestbiotech.com](mailto:support@everestbiotech.com)

Tel: +44 (0)1869 238326

[www.everestbiotech.com](http://www.everestbiotech.com)

**Research Use Only. Not for  
diagnostic or therapeutic use.**

## EB07724-T - Goat Anti-PTPN6 / SHP1 (internal) Antibody - Trial

Size: 20µg specific antibody in 40µl



### Target Protein

**Principal Names:** PTPN6, SHP1, protein tyrosine phosphatase, non-receptor type 6, HCP, HCPH, HPTP1C, PTP-1C, SH-PTP1, SHP-1, SHP-1L, 70 kda SHP-1L protein, hematopoietic cell phosphatase, hematopoietic cell protein-tyrosine phosphatase, protein-tyrosine phosphatase 1C

**Official Symbol:** PTPN6

**Accession Number(s):** NP\_536858.1; NP\_002822.2

**Human GeneID(s):** [5777](#)

**Important Comments:** This antibody is expected to recognise both reported isoforms (NP\_536858.1 and NP\_002822.2)

### Immunogen

Peptide with sequence C-HTKNKREEKVKKQ, from the internal region (near the C Terminus) of the protein sequence according to NP\_536858.1; NP\_002822.2.

Please note the [peptide](#) is available for sale.

### Purification and Storage

Purified from goat serum by ammonium sulphate precipitation followed by antigen affinity chromatography using the immunizing peptide.

Supplied at 0.5 mg/ml in Tris saline, 0.02% sodium azide, pH7.3 with 0.5% bovine serum albumin.

Aliquot and store at -20°C. Minimize freezing and thawing.

### Applications Tested

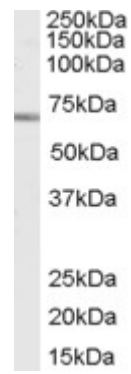
**Peptide ELISA:** antibody detection limit dilution 1:128000.

**Western blot:** Approx 70kDa band observed in lysates of cell lines Jurkat and U937 (calculated MW of 67.7kDa according to NP\_536858.1 and 67.6kDa according to NP\_002822.2). Recommended concentration: 0.2-0.5µg/ml.

### Species Reactivity

**Tested:** Human

**Expected from sequence similarity:** Human



EB07724 (0.2µg/ml) staining of Jurkat cell lysate (35µg protein in RIPA buffer). Primary incubation was 1 hour.  
Detected by chemiluminescence.