

## UK Office

### Everest Biotech Ltd

Cherwell Innovation Centre  
77 Heyford Park  
Upper Heyford  
Oxfordshire  
OX25 5HD  
UK

Enquiries:

[info@everestbiotech.com](mailto:info@everestbiotech.com)

Sales:

[sales@everestbiotech.com](mailto:sales@everestbiotech.com)

Tech support:

[support@everestbiotech.com](mailto:support@everestbiotech.com)

Tel: +44 (0)1869 238326

[www.everestbiotech.com](http://www.everestbiotech.com)

**Research Use Only. Not for  
diagnostic or therapeutic use.**

## EB07762 - Goat Anti-PSME2 Antibody

Size: 100µg specific antibody in 200µl



### Target Protein

**Principal Names:** PSME2, proteasome (prosome, macropain) activator subunit 2 (PA28 beta), PA28B, PA28beta, REGbeta, 11S regulator complex beta subunit, MCP activator, 31-kD subunit, activator of multicatalytic protease subunit 2, cell migration-inducing protein 22, proteasome activator 28-beta, proteasome activator hPA28 subunit beta, proteasome activator subunit 2

**Official Symbol:** PSME2

**Accession Number(s):** NP\_002809.2

**Human GeneID(s):** [5721](#)

**Non-Human GeneID(s):** 19188 (mouse), 29614 (rat)

### Immunogen

Peptide with sequence C-NLEKIVNPKGEEKP, from the C Terminus of the protein sequence according to NP\_002809.2.

Please note the [peptide](#) is available for sale.

### Purification and Storage

Purified from goat serum by ammonium sulphate precipitation followed by antigen affinity chromatography using the immunizing peptide.

Supplied at 0.5 mg/ml in Tris saline, 0.02% sodium azide, pH7.3 with 0.5% bovine serum albumin.

Aliquot and store at -20°C. Minimize freezing and thawing.

### Applications Tested

**Peptide ELISA:** antibody detection limit dilution 1:32000.

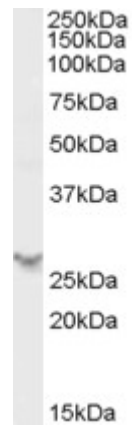
**Western blot:** Approx 27kDa band observed in Human Spleen lysates (calculated MW of 27.4kDa according to NP\_002809.2). Recommended concentration: 0.5-1µg/ml.

**IHC:** Paraffin embedded Human Spleen. Recommended concentration: 5µg/ml.

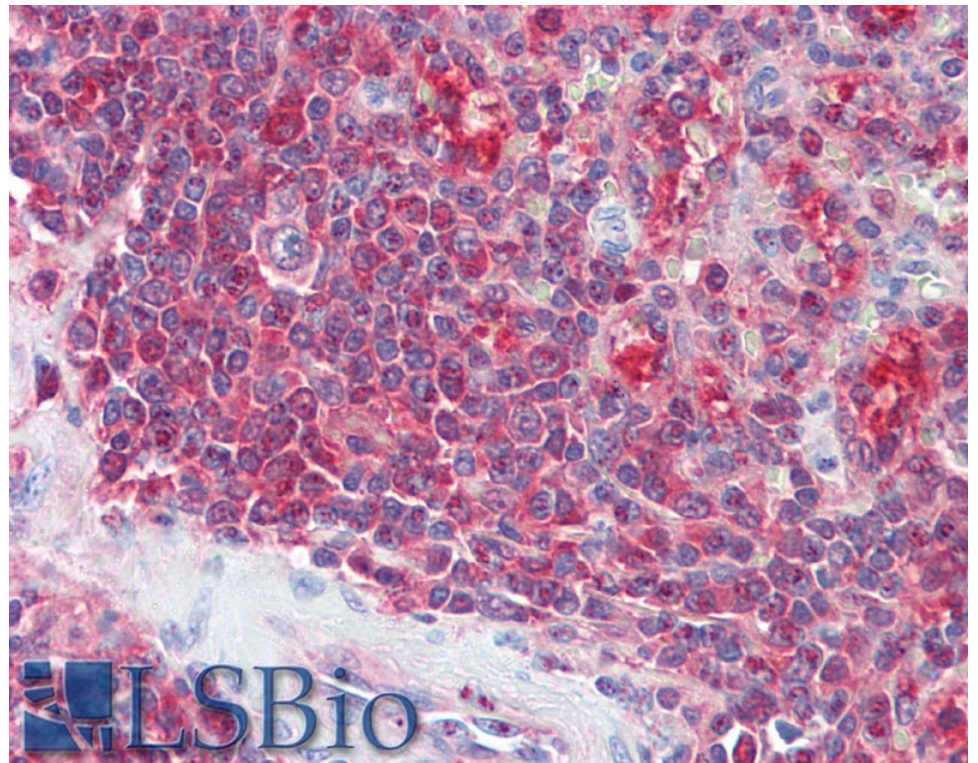
### Species Reactivity

**Tested:** Human

**Expected from sequence similarity:** Human, Mouse, Rat, Dog



EB07762 (0.5 $\mu$ g/ml) staining of Human Spleen lysate (35 $\mu$ g protein in RIPA buffer). Primary incubation was 1 hour. Detected by chemiluminescence.



EB07762 (5 $\mu$ g/ml) staining of paraffin embedded Human Spleen. Steamed antigen retrieval with citrate buffer pH 6, AP-staining.