

## UK Office

### Everest Biotech Ltd

Cherwell Innovation Centre  
77 Heyford Park  
Upper Heyford  
Oxfordshire  
OX25 5HD  
UK

Enquiries:

[info@everestbiotech.com](mailto:info@everestbiotech.com)

Sales:

[sales@everestbiotech.com](mailto:sales@everestbiotech.com)

Tech support:

[support@everestbiotech.com](mailto:support@everestbiotech.com)

Tel: +44 (0)1869 238326

[www.everestbiotech.com](http://www.everestbiotech.com)

**Research Use Only. Not for  
diagnostic or therapeutic use.**

## EB12307 - Goat Anti-proSAAS Antibody

Size: 100µg specific antibody in 200µl



### Target Protein

**Principal Names:** PCSK1N, proprotein convertase subtilisin/kexin type 1 inhibitor, PROSAAS, SAAS, granin-like neuroendocrine peptide, pro-SAAS, proSAAS, proprotein convertase 1 inhibitor

**Official Symbol:** PCSK1N

**Accession Number(s):** NP\_037403.1

**Human GeneID(s):** [27344](#)

**Non-Human GeneID(s):** 30052 (mouse)

### Immunogen

Peptide with sequence C-EAGDETPDVDPE, from the internal region of the protein sequence according to NP\_037403.1.

Please note the [peptide](#) is available for sale.

### Purification and Storage

Purified from goat serum by ammonium sulphate precipitation followed by antigen affinity chromatography using the immunizing peptide.

Supplied at 0.5 mg/ml in Tris saline, 0.02% sodium azide, pH7.3 with 0.5% bovine serum albumin.

Aliquot and store at -20°C. Minimize freezing and thawing.

### Applications Tested

**Peptide ELISA:** antibody detection limit dilution 1:1000.

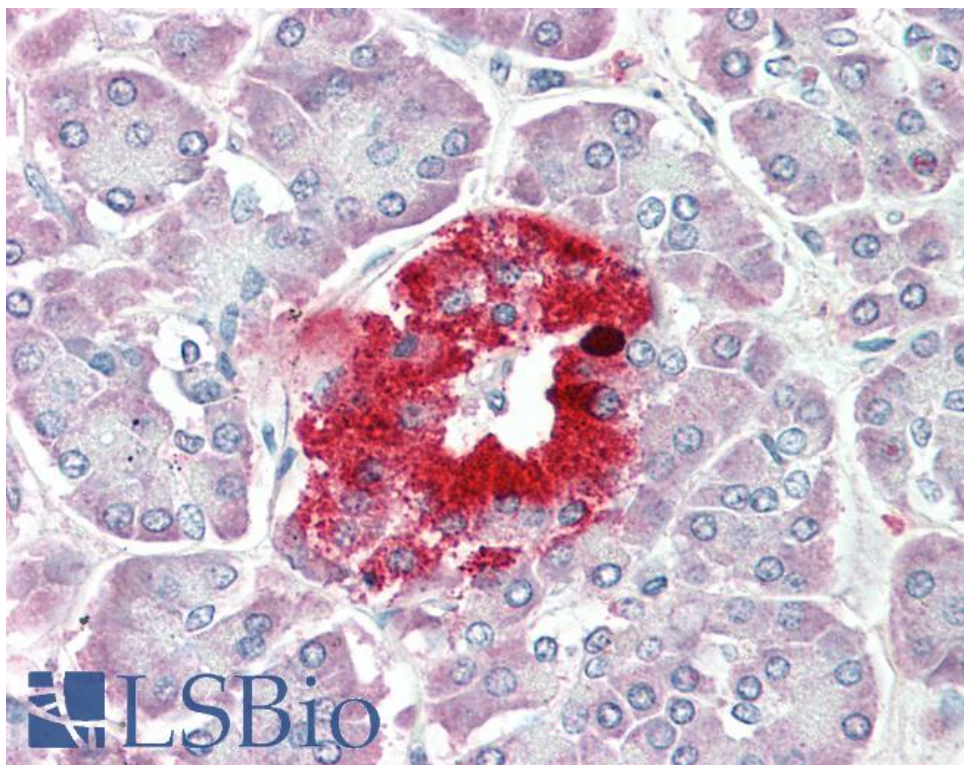
**Western blot:** Preliminary experiments in Human Brain and Pancreas lysates gave no specific signal but low background (at antibody concentration up to 1µg/ml).

**IHC:** Paraffin embedded Human Pancreas. Recommended concentration: 5µg/ml.

### Species Reactivity

**Tested:** Human

**Expected from sequence similarity:** Human, Mouse



EB12307 (5µg/ml) staining of paraffin embedded Human Pancreas. Steamed antigen retrieval with citrate buffer pH 6, AP-staining.