

UK Office

Everest Biotech Ltd

Cherwell Innovation Centre
77 Heyford Park
Upper Heyford
Oxfordshire
OX25 5HD
UK

Enquiries:

info@everestbiotech.com

Sales:

sales@everestbiotech.com

Tech support:

support@everestbiotech.com

Tel: +44 (0)1869 238326

www.everestbiotech.com

**Research Use Only. Not for
diagnostic or therapeutic use.**

EB06727 - Goat Anti-Proopiomelanocortin / POMC Antibody

Size: 100µg specific antibody in 200µl



Target Protein

Principal Names: POMC, proopiomelanocortin, Precursor of MSH, POC, ACTH, CLIP, adrenocorticotropin/ beta-lipotropin/ alpha-melanocyte stimulating hormone/ beta-melanocyte stimulating hormone/ beta-endorphin, LPH, NPP, OTTHUMP00000119991, OTTHUMP00000200964, adrenocorticotrophic hormone, adrenocorticotropin, alpha-melanocyte-stimulating hormone, beta-LPH, beta-MSH, beta-melanocyte-stimulating hormone, corticotropin-like intermediary peptide, gamma-LPH, gamma-MSH, lipotropin beta, lipotropin gamma, melanotropin alpha, melanotropin beta, melanotropin gamma, met-enkephalin, pro-ACTH-endorphin, proopiomelanocortin preproprotein

Official Symbol: POMC

Accession Number(s): NP_000930.1; NP_001030333.1

Human GenelD(s): [5443](#)

Important Comments: Both transcript variants encode the same protein. In Western blot, this product appears to react with the full length precursor protein only.

Immunogen

Peptide with sequence C-NAIIKNAYKKGE, from the C Terminus of the protein sequence according to NP_000930.1; NP_001030333.1.

Please note the [peptide](#) is available for sale.

Purification and Storage

Purified from goat serum by ammonium sulphate precipitation followed by antigen affinity chromatography using the immunizing peptide.

Supplied at 0.5 mg/ml in Tris saline, 0.02% sodium azide, pH7.3 with 0.5% bovine serum albumin.

Aliquot and store at -20°C. Minimize freezing and thawing.

Applications Tested

Peptide ELISA: antibody detection limit dilution 1:128000.

Western blot: Approx 29kDa band observed in lysates of cell line NIH3T3 (calculated MW of 29.4kDa according to NP_000930.1 and NP_001030333.1). Recommended concentration: 0.1-0.3µg/ml. Primary incubation 1 hour at room temperature.

IHC: In paraffin embedded Human Anterior Pituitary Gland shows vesilulate staining in glandular cells. Recommended concentration: 2-4µg/ml.

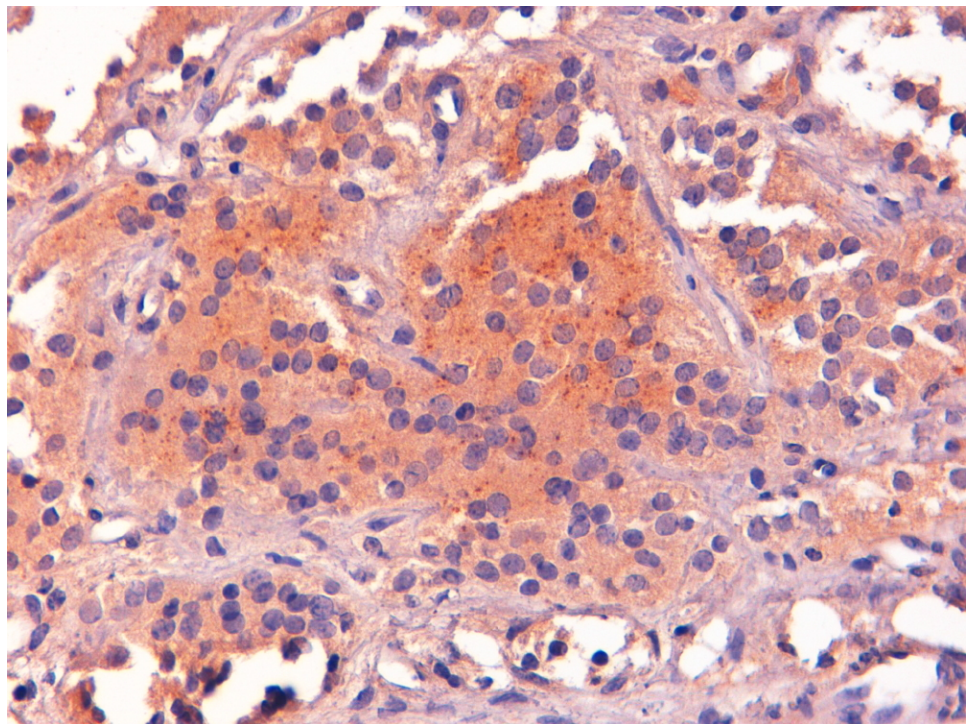
Species Reactivity

Tested: Human, Mouse

Expected from sequence similarity: Human, Mouse, Rat



EB06727 (0.1µg/ml) staining of lysates of cell line NIH3T3 (35µg protein in RIPA buffer). Detected by chemiluminescence.



EB06727 (2µg/ml) staining of paraffin embedded Human Pituitary Gland. Steamed antigen retrieval with Tris/EDTA buffer pH 9, HRP-staining.