

## UK Office

### Everest Biotech Ltd

Cherwell Innovation Centre  
77 Heyford Park  
Upper Heyford  
Oxfordshire  
OX25 5HD  
UK

Enquiries:

[info@everestbiotech.com](mailto:info@everestbiotech.com)

Sales:

[sales@everestbiotech.com](mailto:sales@everestbiotech.com)

Tech support:

[support@everestbiotech.com](mailto:support@everestbiotech.com)

Tel: +44 (0)1869 238326

[www.everestbiotech.com](http://www.everestbiotech.com)

**Research Use Only. Not for  
diagnostic or therapeutic use.**

## EB05710 - Goat Anti-PRDM1 / BLIMP1 Antibody

Size: 100µg specific antibody in 200µl



### Target Protein

**Principal Names:** PRDM1, PR domain containing 1, with ZNF domain, RP1-134E15.1, BLIMP1, MGC118922, MGC118923, MGC118924, MGC118925, PRDI-BF1, B-lymphocyte-induced maturation protein 1, PR domain containing 1, with ZNF domain, isoform 2, PR-domain zinc finger protein 1, PRDI-binding factor-1, beta-interferon gene positive-regulatory domain I binding factor, positive regulatory domain I-binding factor 1

**Official Symbol:** PRDM1

**Accession Number(s):** NP\_001189.2; NP\_878911.1

**Human GeneID(s):** [639](#)

**Non-Human GeneID(s):** 12142 (mouse)

**Important Comments:** This antibody is expected to recognize both reported isoforms (NP\_001189.2 and NP\_878911.1).

### Immunogen

Peptide with sequence C-KVKQETVEPMDP, from the C Terminus of the protein sequence according to NP\_001189.2; NP\_878911.1.

Please note the [peptide](#) is available for sale.

### Purification and Storage

Purified from goat serum by ammonium sulphate precipitation followed by antigen affinity chromatography using the immunizing peptide.

Supplied at 0.5 mg/ml in Tris saline, 0.02% sodium azide, pH7.3 with 0.5% bovine serum albumin.

Aliquot and store at -20°C. Minimize freezing and thawing.

### Applications Tested

**Peptide ELISA:** antibody detection limit dilution 1:2000.

**Western blot:** Approx 100kDa band observed in Human Brain (Cerebellum) lysates (calculated MW of 91.8kDa according to NP\_001189.2 and of 76.8 according to NP\_878911.1). Recommended concentration: 1-3µg/ml.

**IHC:** In paraffin embedded Human Tonsil shows nuclear staining in select tonsil cells. Recommended concentration: 2-4µg/ml.

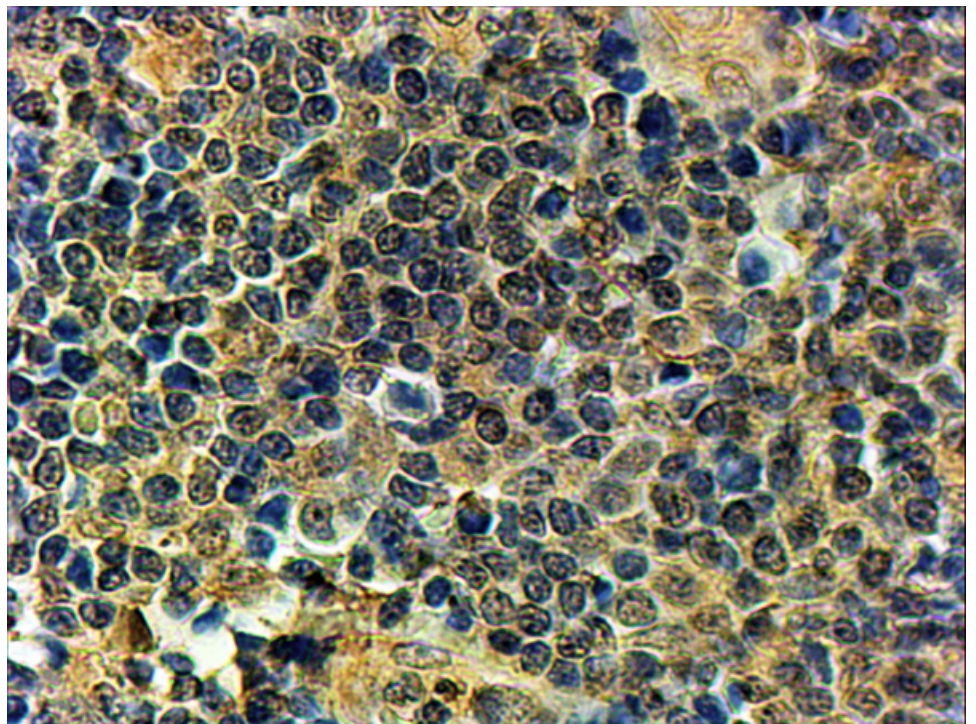
### Species Reactivity

**Tested:** Human

**Expected from sequence similarity:** Human, Mouse, Rat, Dog, Pig, Cow



EB05710 (1 $\mu$ g/ml) staining of Human Brain (Cerebellum) lysate (35 $\mu$ g protein in RIPA buffer). Primary incubation was 1 hour. Detected by chemiluminescence.



EB05710 (2 $\mu$ g/ml) staining of paraffin embedded Human Tonsil. Steamed antigen retrieval with Tris/EDTA buffer pH 9, HRP-staining.