

UK Office

Everest Biotech Ltd

Cherwell Innovation Centre
77 Heyford Park
Upper Heyford
Oxfordshire
OX25 5HD
UK

Enquiries:

info@everestbiotech.com

Sales:

sales@everestbiotech.com

Tech support:

support@everestbiotech.com

Tel: +44 (0)1869 238326

www.everestbiotech.com

**Research Use Only. Not for
diagnostic or therapeutic use.**

EB10317 - Goat Anti-PPPDE1 / PNAS4 Antibody

Size: 100µg specific antibody in 200µl



Target Protein

Principal Names: C1orf121, CGI-146, FAM152A, family with sequence similarity 152, member A, FLJ21998, PNAS-4, PPPDE peptidase domain containing 1, PPPDE1, PNAS4

Official Symbol: PPPDE1

Accession Number(s): NP_057160.2

Human GeneID(s): [51029](#)

Non-Human GeneID(s): 78825 (mouse), 289277 (rat)

Immunogen

Peptide with sequence C-ELGKEYKGNAYH, from the internal region of the protein sequence according to NP_057160.2.

Please note the [peptide](#) is available for sale.

Purification and Storage

Purified from goat serum by ammonium sulphate precipitation followed by antigen affinity chromatography using the immunizing peptide.

Supplied at 0.5 mg/ml in Tris saline, 0.02% sodium azide, pH7.3 with 0.5% bovine serum albumin.

Aliquot and store at -20°C. Minimize freezing and thawing.

Applications Tested

Peptide ELISA: antibody detection limit dilution 1:32000.

Western blot: In transfected HEK293 transiently expressing full-length Human PPPDE1 (myc and DYKDDDDK tagged), a band of approx. 30kDa was observed. No bands were observed in mock-transfected HEK293 and the same band was observed using anti-myc tag antibody. Recommended concentration: 0.5-1µg/ml.

IHC: Paraffin embedded Human Skin. Recommended concentration: 10µg/ml.

Purchase the +ve control! The transfected lysate used to QC this product is available for sale. Please email sales@everestbiotech.com to request datasheet, pricing and delivery information.

Species Reactivity

Tested: Human

Expected from sequence similarity: Human, Mouse, Rat, Dog, Cow, Pig

Specific References

This antibody has been successfully used in Western blot on Mouse:

Chao Lin, Hua Ying Yan, Jun Yang, Lei Li, Mei Tang, Xinyu Zhao, Chunlai Nie, Na Luo, Yuquan Wei and Zhu Yuan

Combination of DESI2 and IP10 gene therapy significantly improves therapeutic efficacy against murine carcinoma

Oncotarget. 2017 May 5;8(34):56281-56295.

PMID: 28915590

This antibody has been successfully used in IHC and Western blot on Human:

Yuan Z, Guo W, Yang J, Li L, Wang M, Lei Y, Wan Y, Zhao X, Luo N, Cheng P, Liu X, Nie C, Peng Y, Tong A, Wei Y

PNAS-4, an Early DNA Damage Response Gene, Induces S Phase Arrest and Apoptosis by Activating Checkpoint Kinases in Lung Cancer Cells.

J Biol Chem. 2015 Jun 12;290(24):14927

PMID: 25918161

This antibody has been successfully used on Human:

Li L, Chen DB, Lin C, Cao K, Wan Y, Zhao XY, Nie CL, Yuan Z, Wei YQ.

hPNAS-4 inhibits proliferation through S phase arrest and apoptosis: underlying action mechanism in ovarian cancer cells.

Apoptosis. 2013 Apr;18(4):467-79.

PMID: 23322088

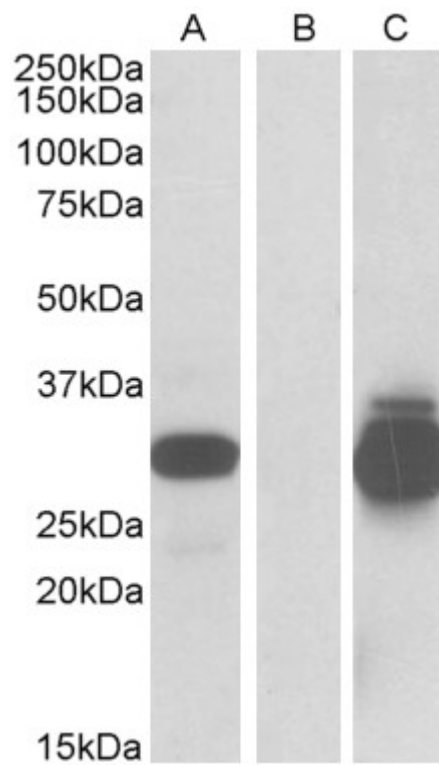
This antibody has been successfully used in Western blot on Human:

Zeng H, Yuan Z, Zhu H, Li L, Shi H, Wang Z, Fan Y, Deng Q, Zeng J, He Y, Xiao J, Li Z.

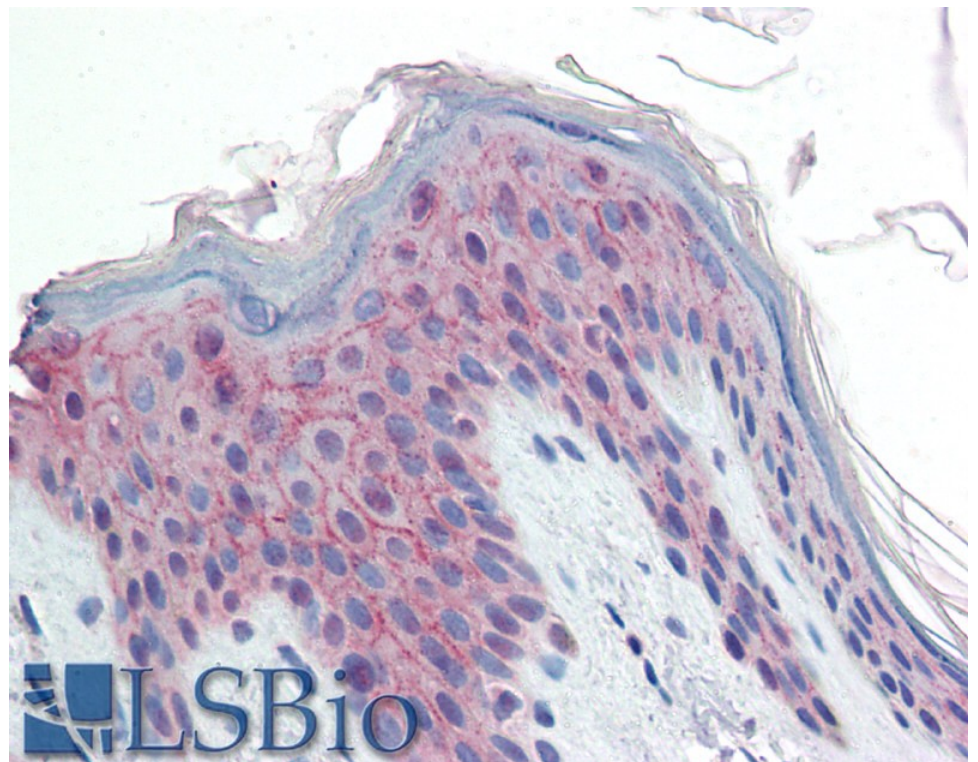
Expression of hPNAS-4 radiosensitizes Lewis lung cancer.

Int J Radiat Oncol Biol Phys. 2012 Nov 15;84(4):e533-40.

PMID: 22836062



HEK293 lysate (10ug protein in RIPA buffer) overexpressing Human PPPDE1 with C-terminal MYC tag probed with EB10317 (0.5ug/ml) in Lane A and probed with anti-MYC Tag (1/5000) in lane C. Mock-transfected HEK293 probed with EB10317 (1mg/ml) in Lane B. Primary incubations were for 1 hour. Detected by chemiluminescence



EB10317 (10µg/ml) staining of paraffin embedded Human Skin. Steamed antigen retrieval with citrate buffer pH 6, AP-staining.