

UK Office

Everest Biotech Ltd

Cherwell Innovation Centre
77 Heyford Park
Upper Heyford
Oxfordshire
OX25 5HD
UK

Enquiries:

info@everestbiotech.com

Sales:

sales@everestbiotech.com

Tech support:

support@everestbiotech.com

Tel: +44 (0)1869 238326

www.everestbiotech.com

**Research Use Only. Not for
diagnostic or therapeutic use.**

EB05232 - Goat Anti-PPP2R5D Antibody

Size: 100µg specific antibody in 200µl



Target Protein

Principal Names: PPP2R5D, MGC2134, MGC8949, protein phosphatase 2, regulatory subunit B (B56), delta isoform, PP2A, B subunit, B1 delta isoform, PP2A, B subunit, R5 delta isoform, PP2A, B subunit, B56 delta isoform, PP2A, B subunit, PR61 delta isoform, Serine/threonine protein phosphatase 2A, 56 kDa regulatory subunit, delta isoform, protein phosphatase 2, regulatory subunit B1, delta isoform, B56D, delta isoform of regulatory subunit B56, protein phosphatase 2A, serine/threonine-protein phosphatase 2A 56 kDa regulatory subunit delta isoform

Official Symbol: PPP2R5D

Accession Number(s): NP_006236.1; NP_851307.1; NP_851308.1

Human GeneID(s): [5528](#)

Important Comments: This antibody is expected to recognise all three reported isoforms (NP_006236.1; NP_851307.1; NP_851308.1).

Immunogen

Peptide with sequence C-KRAEEFLTASQEAL, from the C Terminus of the protein sequence according to NP_006236.1; NP_851307.1; NP_851308.1.

Please note the [peptide](#) is available for sale.

Purification and Storage

Purified from goat serum by ammonium sulphate precipitation followed by antigen affinity chromatography using the immunizing peptide.

Supplied at 0.5 mg/ml in Tris saline, 0.02% sodium azide, pH7.3 with 0.5% bovine serum albumin.

Aliquot and store at -20°C. Minimize freezing and thawing.

Applications Tested

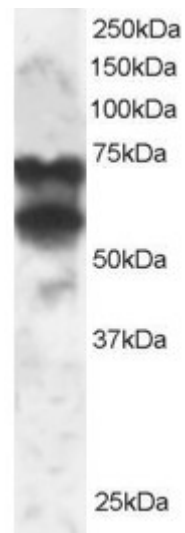
Peptide ELISA: antibody detection limit dilution 1:20000.

Western blot: Approx 70kDa and 60kDa bands seen in 293 lysate (Predicted MW of 68kDa and 62kDa according to NP_006236 and AAH01175, respectively). Recommended for use at 1-3µg/ml.

Species Reactivity

Tested: Human

Expected from sequence similarity: Human, Mouse, Rat, Dog, Pig, Cow



EB05232 staining (2µg/ml) of 293 lysate (RIPA buffer, 30µg total protein per lane). Primary incubated for 1 hour.
Detected by western blot using chemiluminescence.