

## UK Office

### Everest Biotech Ltd

Cherwell Innovation Centre  
77 Heyford Park  
Upper Heyford  
Oxfordshire  
OX25 5HD  
UK

Enquiries:

[info@everestbiotech.com](mailto:info@everestbiotech.com)

Sales:

[sales@everestbiotech.com](mailto:sales@everestbiotech.com)

Tech support:

[support@everestbiotech.com](mailto:support@everestbiotech.com)

Tel: +44 (0)1869 238326

[www.everestbiotech.com](http://www.everestbiotech.com)

**Research Use Only. Not for  
diagnostic or therapeutic use.**

## EB09407 - Goat Anti-PPP2R4 / PP2A Antibody

Size: 100µg specific antibody in 200µl



### Target Protein

**Principal Names:** PPP2R4, protein phosphatase 2A activator, regulatory subunit 4, MGC2184, PP2A, PR53, PTPA, OTTHUMP00000022333, PP2A phosphatase activator, PP2A, subunit B\1, phosphotyrosyl phosphatase activator, protein phosphatase 2A, regulatory subunit B\1, protein phosphatase 2A, regulatory subunit B\1 (PR 53)

**Official Symbol:** PTPA

**Accession Number(s):** NP\_821068.1; NP\_066954.2; NP\_821070.1

**Human GeneID(s):** [5524](#)

**Non-Human GeneID(s):** 110854 (mouse), 362102 (rat)

**Important Comments:** This antibody is expected to recognize all reported isoforms (NP\_821068.1; NP\_066954.2; NP\_821070.1). Reported variants NP\_066954.2 and NP\_821067.1 represent identical protein.

### Immunogen

Peptide with sequence C-GSLLPIHPVTSG, from the C Terminus of the protein sequence according to NP\_821068.1; NP\_066954.2; NP\_821070.1.

Please note the [peptide](#) is available for sale.

### Purification and Storage

Purified from goat serum by ammonium sulphate precipitation followed by antigen affinity chromatography using the immunizing peptide.

Supplied at 0.5 mg/ml in Tris saline, 0.02% sodium azide, pH7.3 with 0.5% bovine serum albumin.

Aliquot and store at -20°C. Minimize freezing and thawing.

### Applications Tested

**Peptide ELISA:** antibody detection limit dilution 1:32000.

**Western blot:** Approx 37kDa band observed in Human, Mouse and Rat Liver lysates and in lysates of cell line HepG2 (calculated MW of 36.8kDa according to NP\_066954.2).

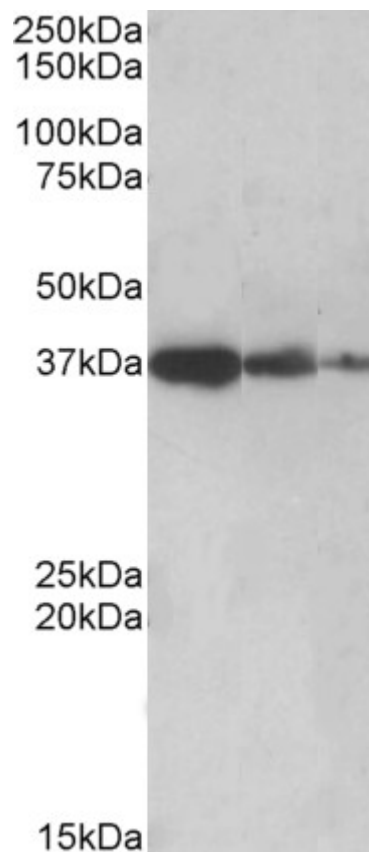
Recommended concentration: 0.5-2µg/ml. Primary incubation was 1 hour.

**IHC:** Paraffin embedded Human Testis. Recommended concentration: 3.75µg/ml.

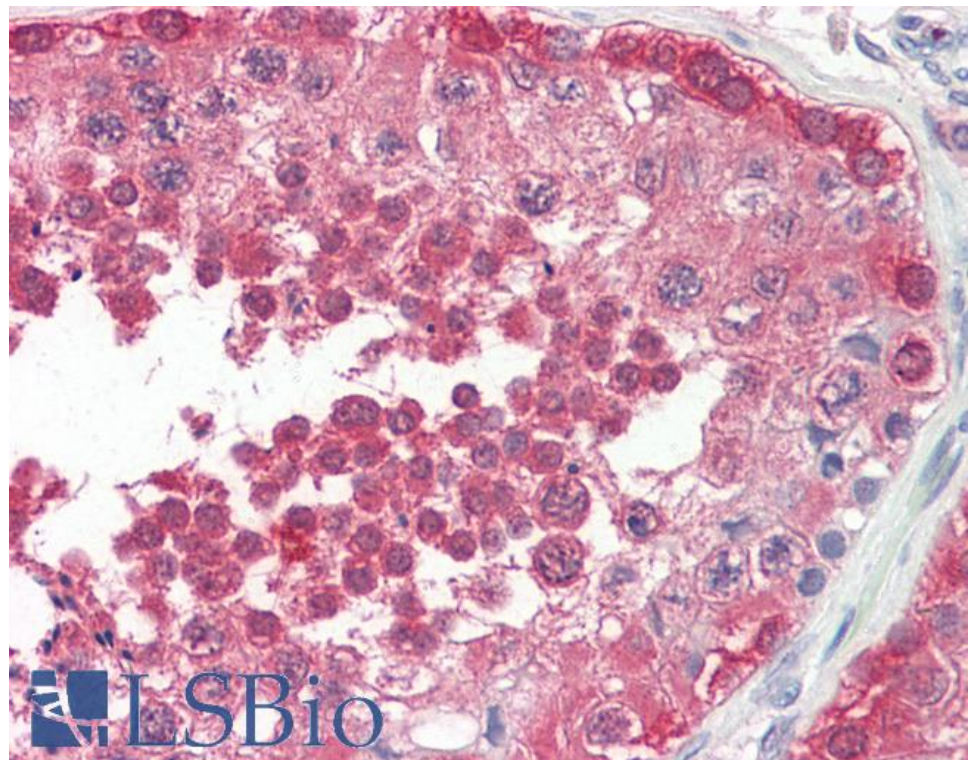
### Species Reactivity

**Tested:** Human, Mouse, Rat

**Expected from sequence similarity:** Human, Mouse, Rat, Dog, Cow



EB09407 (0.5µg/ml) staining of Human Liver lysate (lane 1), Mouse Liver (lane 2) and Rat Liver (lane 3) (35µg protein in RIPA buffer). Detected by chemiluminescence.



EB09407 (3.75µg/ml) staining of paraffin embedded Human Testis. Steamed antigen retrieval with citrate buffer pH 6, AP-staining.