

## UK Office

### Everest Biotech Ltd

Cherwell Innovation Centre  
77 Heyford Park  
Upper Heyford  
Oxfordshire  
OX25 5HD  
UK

Enquiries:

[info@everestbiotech.com](mailto:info@everestbiotech.com)

Sales:

[sales@everestbiotech.com](mailto:sales@everestbiotech.com)

Tech support:

[support@everestbiotech.com](mailto:support@everestbiotech.com)

Tel: +44 (0)1869 238326

[www.everestbiotech.com](http://www.everestbiotech.com)

**Research Use Only. Not for  
diagnostic or therapeutic use.**

## EB08233 - Goat Anti-PPP2R3A Antibody

Size: 100µg specific antibody in 200µl



### Target Protein

**Principal Names:** PPP2R3A, protein phosphatase 2 (formerly 2A), regulatory subunit B\1\1, alpha, PPP2R3, PR130, PR72, PP2A, subunit B, B\1\1-PR72/PR130, PP2A, subunit B, B72/B130 isoforms, PP2A, subunit B, R3 isoform, Serine/threonine protein phosphatase 2A, 72/130 kDa regul

**Official Symbol:** PPP2R3A

**Accession Number(s):** NP\_002709.2; NP\_871626.1

**Human GeneID(s):** [5523](#)

**Important Comments:** This antibody is expected to recognise both reported isoforms (NP\_002709.2; NP\_871626.1).

### Immunogen

Peptide with sequence C-QKDVEN DGPEPSD, from the internal region of the protein sequence according to NP\_002709.2; NP\_871626.1.

Please note the [peptide](#) is available for sale.

### Purification and Storage

Purified from goat serum by ammonium sulphate precipitation followed by antigen affinity chromatography using the immunizing peptide.

Supplied at 0.5 mg/ml in Tris saline, 0.02% sodium azide, pH7.3 with 0.5% bovine serum albumin.

Aliquot and store at -20°C. Minimize freezing and thawing.

### Applications Tested

**Peptide ELISA:** antibody detection limit dilution 1:16000.

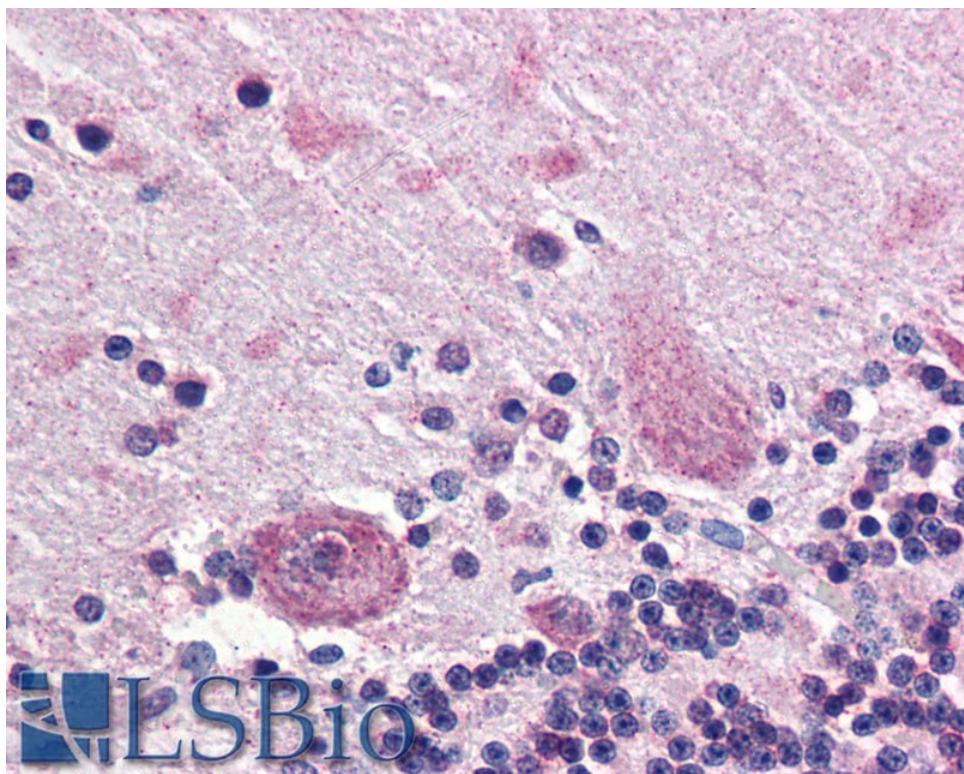
**Western blot:** Preliminary experiments gave an approx 80kDa band in Human Skeletal Muscle lysates after 1µg/ml antibody staining. Please note that currently we cannot find an explanation in the literature for the band we observe given the calculated size of 130kDa according to NP\_002709.2 and of 61.1kDa according to NP\_871626.1. The 80kDa band was successfully blocked by incubation with the immunizing peptide.

**IHC:** Paraffin embedded Human Brain (Cerebellum). Recommended concentration: 5µg/ml.

### Species Reactivity

**Tested:** Human

**Expected from sequence similarity:** Human



EB08233 (5µg/ml) staining of paraffin embedded Human Cerebellum. Steamed antigen retrieval with citrate buffer pH 6, AP-staining.