

UK Office

Everest Biotech Ltd

Cherwell Innovation Centre
77 Heyford Park
Upper Heyford
Oxfordshire
OX25 5HD
UK

Enquiries:

info@everestbiotech.com

Sales:

sales@everestbiotech.com

Tech support:

support@everestbiotech.com

Tel: +44 (0)1869 238326

www.everestbiotech.com

**Research Use Only. Not for
diagnostic or therapeutic use.**

EB10040 - Goat Anti-POU6F1 Antibody

Size: 100µg specific antibody in 200µl



Target Protein

Principal Names: BRN5, MPOU, POU class 6 homeobox 1, POU domain, class 6, transcription factor 1, TCFB1, POU6F1

Official Symbol: POU6F1

Accession Number(s): NP_002693.3

Human GeneID(s): [5463](#)

Immunogen

Peptide with sequence C-ETPTVSQLVSKPHTP, from the internal region of the protein sequence according to NP_002693.3.

Please note the [peptide](#) is available for sale.

Purification and Storage

Purified from goat serum by ammonium sulphate precipitation followed by antigen affinity chromatography using the immunizing peptide.

Supplied at 0.5 mg/ml in Tris saline, 0.02% sodium azide, pH7.3 with 0.5% bovine serum albumin.

Aliquot and store at -20°C. Minimize freezing and thawing.

Applications Tested

Peptide ELISA: antibody detection limit dilution 1:128000.

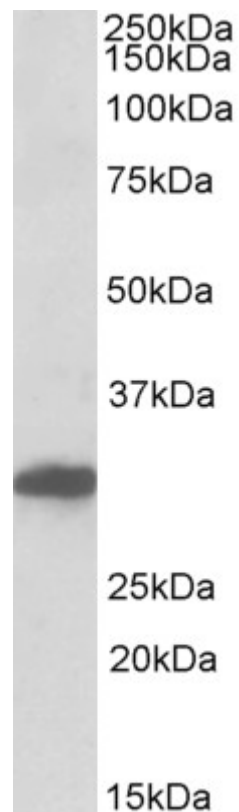
Western blot: Approx 30kDa band observed in Human Brain (Cerebral cortex) and Mouse fetal Brain lysates (calculated MW of 32.6kDa according to NP_002693.3).

Recommended concentration: 0.3-1µg/ml.

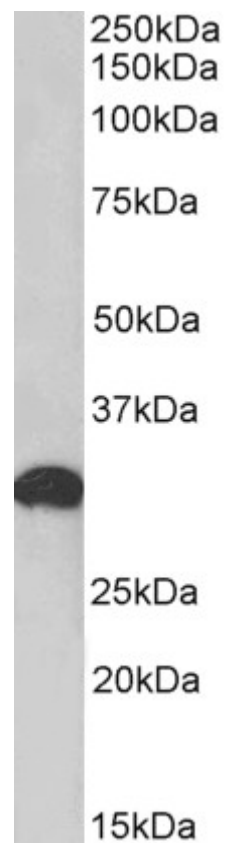
Species Reactivity

Tested: Human, Mouse

Expected from sequence similarity: Human, Mouse, Rat, Dog, Cow



EB10040 (0.3 μ g/ml) staining of Human Cerebral Cortex lysate (35 μ g protein in RIPA buffer). Primary incubation was 1 hour. Detected by chemiluminescence.



EB10040 (0.05 μ g/ml) staining of Mouse fetal Brain lysate (35 μ g protein in RIPA buffer). Primary incubation was 1 hour. Detected by chemiluminescence.