

UK Office

Everest Biotech Ltd

Cherwell Innovation Centre
77 Heyford Park
Upper Heyford
Oxfordshire
OX25 5HD
UK

Enquiries:

info@everestbiotech.com

Sales:

sales@everestbiotech.com

Tech support:

support@everestbiotech.com

Tel: +44 (0)1869 238326

www.everestbiotech.com

**Research Use Only. Not for
diagnostic or therapeutic use.**

EB10017 - Goat Anti-POU2AF1 Antibody

Size: 100µg specific antibody in 200µl



Target Protein

Principal Names: BOB1, OBF1, OBF-1, OCAB, POU class 2 associating factor 1, POU domain, class 2, associating factor 1, POU2AF1

Official Symbol: POU2AF1

Accession Number(s): NP_006226.2

Human GeneID(s): [5450](#)

Immunogen

Peptide with sequence YTEYVPHEAVSCP, from the internal region of the protein sequence according to NP_006226.2.

Please note the [peptide](#) is available for sale.

Purification and Storage

Purified from goat serum by ammonium sulphate precipitation followed by antigen affinity chromatography using the immunizing peptide.

Supplied at 0.5 mg/ml in Tris saline, 0.02% sodium azide, pH7.3 with 0.5% bovine serum albumin.

Aliquot and store at -20°C. Minimize freezing and thawing.

Applications Tested

Peptide ELISA: antibody detection limit dilution 1:32000.

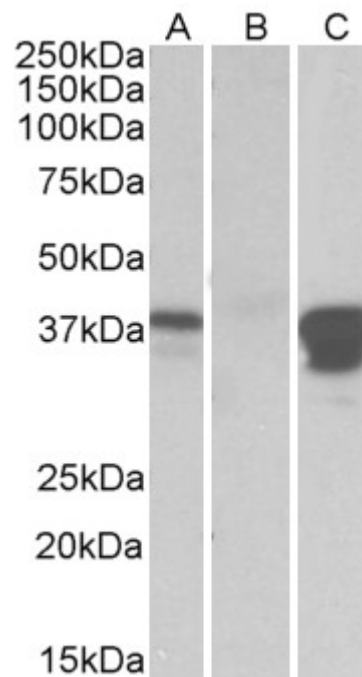
Western blot: In transfected HEK293 transiently expressing full-length Human POU2AF1 (myc and DYKDDDDK tagged), a band of approx. 38kDa was observed. No bands were observed in mock-transfected HEK293 and the same band was observed using anti-DYKDDDDK tag antibody. The 38kDa was also observed in cell line Daudi. Recommended concentration, 0.3-1µg/ml.

Purchase the +ve control! The transfected lysate used to QC this product is available for sale. Please email sales@everestbiotech.com to request datasheet, pricing and delivery information.

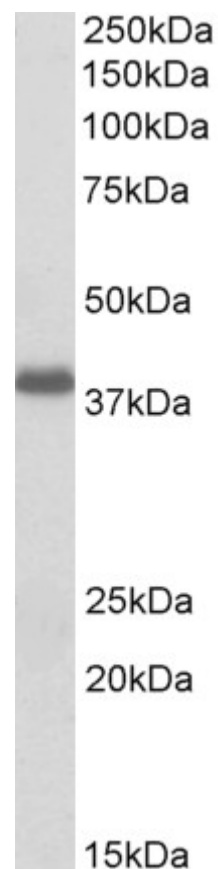
Species Reactivity

Tested: Human

Expected from sequence similarity: Human, Mouse, Rat, Dog, Cow



HEK293 lysate (10ug protein in RIPA buffer) overexpressing Human POU2AF1 with DYKDDDDK tag probed with EB10017 (0.5ug/ml) in Lane A and probed with anti- DYKDDDDK Tag (1/3000) in lane C. Mock-transfected HEK293 probed with EB10017 (1mg/ml) in Lane B. Primary incubations were for 1 hour. Detected by chemiluminescence.



EB10017 (0.3µg/ml) staining of Daudi lysate (35µg protein in RIPA buffer). Primary incubation was 1 hour. Detected by chemiluminescence.