

UK Office

Everest Biotech Ltd

Cherwell Innovation Centre
77 Heyford Park
Upper Heyford
Oxfordshire
OX25 5HD
UK

Enquiries:

info@everestbiotech.com

Sales:

sales@everestbiotech.com

Tech support:

support@everestbiotech.com

Tel: +44 (0)1869 238326

www.everestbiotech.com

**Research Use Only. Not for
diagnostic or therapeutic use.**

EB07828 - Goat Anti-PODXL Antibody

Size: 100µg specific antibody in 200µl



Target Protein

Principal Names: PODXL, podocalyxin-like, Gp200, MGC138240, PCLP

Official Symbol: PODXL

Accession Number(s): NP_001018121.1 ; NP_005388.2

Human GeneID(s): [5420](#)

Non-Human GeneID(s): 27205 (mouse), 192181 (rat)

Important Comments: This antibody is expected to recognise both reported isoforms (NP_001018121.1 and NP_005388.2).

Immunogen

Peptide with sequence C-DNLTKDDLDEEEDTH, from the C Terminus of the protein sequence according to NP_001018121.1 ; NP_005388.2.

Please note the [peptide](#) is available for sale.

Purification and Storage

Purified from goat serum by ammonium sulphate precipitation followed by antigen affinity chromatography using the immunizing peptide.

Supplied at 0.5 mg/ml in Tris saline, 0.02% sodium azide, pH7.3 with 0.5% bovine serum albumin.

Aliquot and store at -20°C. Minimize freezing and thawing.

Applications Tested

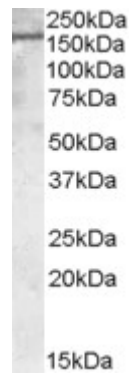
Peptide ELISA: antibody detection limit dilution 1:8000.

Western blot: Approx 160kDa band observed in Human, Mouse and Rat Kidney lysates (calculated MW of 58.6kDa according to NP_001018121.1 and 55.4kDa according to NP_005388.2). The observed molecular weight corresponds to earlier findings in literature with different antibodies (Kershaw et al., J Biol Chem. 1997 Jun 20;272(25):15708-14.; PMID: 9188463). Recommended concentration: 1-3µg/ml.

Species Reactivity

Tested: Human, Mouse, Rat

Expected from sequence similarity: Human, Mouse, Rat, Dog



EB07828 (1 μ g/ml) staining of Human Kidney lysate (35 μ g protein in RIPA buffer). Primary incubation was 1 hour.
Detected by chemiluminescence.