

UK Office

Everest Biotech Ltd

Cherwell Innovation Centre
77 Heyford Park
Upper Heyford
Oxfordshire
OX25 5HD
UK

Enquiries:

info@everestbiotech.com

Sales:

sales@everestbiotech.com

Tech support:

support@everestbiotech.com

Tel: +44 (0)1869 238326

www.everestbiotech.com

**Research Use Only. Not for
diagnostic or therapeutic use.**

EB08403 - Goat Anti-PNPLA2 / Desnutrin Antibody

Size: 100µg specific antibody in 200µl



Target Protein

Principal Names: PNPLA2, desnutrin, patatin-like phospholipase domain containing 2, 1110001C14Rik, ATGL, DKFZp667M109, FP17548, PEDF-R, TTS-2.2, TTS2, adipose triglyceride lipase, pigment epithelium-derived factor, transport-secretion protein 2.2, triglyceride hydrolase

Official Symbol: PNPLA2

Accession Number(s): NP_065109.1

Human GeneID(s): [57104](#)

Immunogen

Peptide with sequence C-HFNSKDELIQAN, from the internal region of the protein sequence according to NP_065109.1.

Please note the [peptide](#) is available for sale.

Purification and Storage

Purified from goat serum by ammonium sulphate precipitation followed by antigen affinity chromatography using the immunizing peptide.

Supplied at 0.5 mg/ml in Tris saline, 0.02% sodium azide, pH7.3 with 0.5% bovine serum albumin.

Aliquot and store at -20°C. Minimize freezing and thawing.

Applications Tested

Peptide ELISA: antibody detection limit dilution 1:128000.

Western blot: Approx 60kDa band observed in Human Heart lysates (calculated MW of 55.3kDa according to NP_065109.1). Recommended concentration: 0.03-0.1µg/ml. Primary incubation was 1 hour.

Species Reactivity

Tested: Human

Expected from sequence similarity: Human, Mouse, Rat, Cow

Specific Reference

This antibody has been successfully used in Western blot on Mouse:

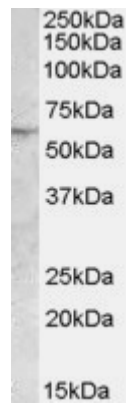
Ramseyer VD, Kimler VA, Granneman JG.

Vacuolar protein sorting 13C is

a novel lipid droplet protein that inhibits lipolysis in brown adipocytes.

Mol Metab. 2018 Jan;7:57-70.

PMID: 29175050



EB08403 (0.03µg/ml) staining of Human Heart lysate (35µg protein in RIPA buffer). Detected by chemiluminescence.