

## UK Office

### Everest Biotech Ltd

Cherwell Innovation Centre  
77 Heyford Park  
Upper Heyford  
Oxfordshire  
OX25 5HD  
UK

Enquiries:

[info@everestbiotech.com](mailto:info@everestbiotech.com)

Sales:

[sales@everestbiotech.com](mailto:sales@everestbiotech.com)

Tech support:

[support@everestbiotech.com](mailto:support@everestbiotech.com)

Tel: +44 (0)1869 238326

[www.everestbiotech.com](http://www.everestbiotech.com)

**Research Use Only. Not for  
diagnostic or therapeutic use.**

## EB06660 - Goat Anti-Plexin D1 Antibody

Size: 100µg specific antibody in 200µl



### Target Protein

**Principal Names:** PLXND1, PLEXD1, KIAA0620, plexin D1, MGC75353

**Official Symbol:** PLXND1

**Accession Number(s):** NP\_055918.2

**Human GeneID(s):** [23129](#)

### Immunogen

Peptide with sequence C-LAEPKKSHRQSH, from the internal region of the protein sequence according to NP\_055918.2.

Please note the [peptide](#) is available for sale.

### Purification and Storage

Purified from goat serum by ammonium sulphate precipitation followed by antigen affinity chromatography using the immunizing peptide.

Supplied at 0.5 mg/ml in Tris saline, 0.02% sodium azide, pH7.3 with 0.5% bovine serum albumin.

Aliquot and store at -20°C. Minimize freezing and thawing.

### Applications Tested

**Peptide ELISA:** antibody detection limit dilution 1:128000.

**Western blot:** A customer reported a 250kDa band in Human Arterial endothelial cells lysates at 0.5µg/ml.

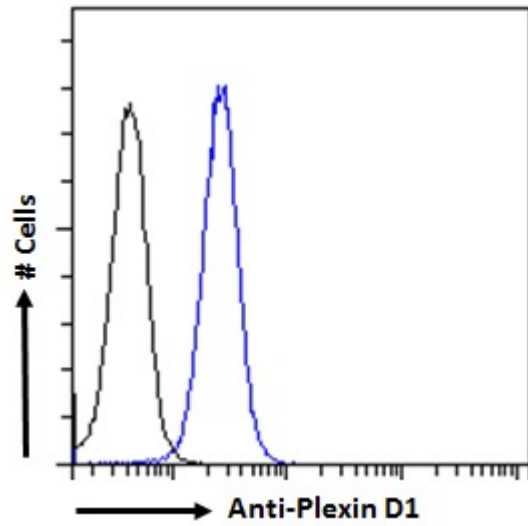
**IHC:** A customer reported specific stain in Paraffin-embedded Mouse Brain after epitope retrieval in Citrate buffer pH6.

**Flow Cytometry:** Flow cytometric analysis of K562 cells. Recommended concentration: 10µg/ml.

### Species Reactivity

**Tested:** Human, Mouse

**Expected from sequence similarity:** Human, Dog, Pig, Cow



EB06660 Flow cytometric analysis of paraformaldehyde fixed K562 cells (blue line), permeabilized with 0.5% Triton. Primary incubation 1hr (10ug/ml) followed by Alexa Fluor 488 secondary antibody (2ug/ml). IgG control: Unimmunized goat IgG (black line) followed by Alexa Fluor 488 secondary antibody.