

## UK Office

### Everest Biotech Ltd

Cherwell Innovation Centre  
77 Heyford Park  
Upper Heyford  
Oxfordshire  
OX25 5HD  
UK

Enquiries:

[info@everestbiotech.com](mailto:info@everestbiotech.com)

Sales:

[sales@everestbiotech.com](mailto:sales@everestbiotech.com)

Tech support:

[support@everestbiotech.com](mailto:support@everestbiotech.com)

Tel: +44 (0)1869 238326

[www.everestbiotech.com](http://www.everestbiotech.com)

**Research Use Only. Not for  
diagnostic or therapeutic use.**

## EB08421 - Goat Anti-Pleiotrophin Antibody

Size: 100µg specific antibody in 200µl



### Target Protein

**Principal Names:** PTN, pleiotrophin (heparin binding growth factor 8, neurite growth-promoting factor 1), HARP, HBGF8, HBNF, NEGF1, heparin affin regulatory protein, heparin binding growth factor 8, heparin-binding growth-associated molecule, neurite growth-promoting factor 1, pleiotrophin, HBBM, HB-GAM, HBGF-8, HBNF-1, heparin-binding brain mitogen, heparin-binding growth factor 8, heparin-binding neurite outgrowth-promoting factor 1, OSF-1, osteoblast-specific factor 1

**Official Symbol:** PTN

**Accession Number(s):** NP\_002816.1

**Human GeneID(s):** [5764](#)

**Non-Human GeneID(s):** 19242 (mouse), 24924 (rat)

### Immunogen

Peptide with sequence C-KEGKKQEKMILD, from the C Terminus of the protein sequence according to NP\_002816.1.

Please note the [peptide](#) is available for sale.

### Purification and Storage

Purified from goat serum by ammonium sulphate precipitation followed by antigen affinity chromatography using the immunizing peptide.

Supplied at 0.5 mg/ml in Tris saline, 0.02% sodium azide, pH7.3 with 0.5% bovine serum albumin.

Aliquot and store at -20°C. Minimize freezing and thawing.

### Applications Tested

**Peptide ELISA:** antibody detection limit dilution 1:8000.

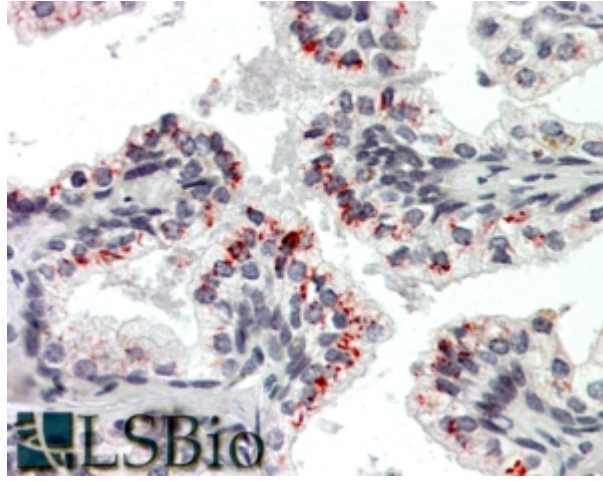
**Western blot:** Approx 18kDa band observed in lysates of Mouse fetal Brain (calculated MW of 18.9kDa according to Mouse NP\_032999.1). Recommended concentration: 0.1-0.3µg/ml.

**IHC:** In paraffin embedded Human Prostate shows distinct staining at the base of the glands. Recommended concentration, 3-5µg/ml.

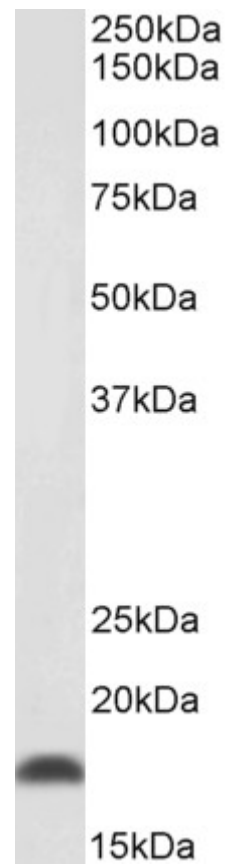
### Species Reactivity

**Tested:** Human, Mouse

**Expected from sequence similarity:** Human, Mouse, Rat



EB08421 (3.8 $\mu$ g/ml) staining of paraffin embedded Human Prostate. Steamed antigen retrieval with citrate buffer pH 6, AP-staining.



EB08421 (0.1 $\mu$ g/ml) staining of Mouse fetal Brain (35 $\mu$ g protein in RIPA buffer). Primary incubation was 1 hour. Detected by chemiluminescence.