

UK Office

Everest Biotech Ltd

Cherwell Innovation Centre
77 Heyford Park
Upper Heyford
Oxfordshire
OX25 5HD
UK

Enquiries:

info@everestbiotech.com

Sales:

sales@everestbiotech.com

Tech support:

support@everestbiotech.com

Tel: +44 (0)1869 238326

www.everestbiotech.com

**Research Use Only. Not for
diagnostic or therapeutic use.**

EB08032 - Goat Anti-PLA2G1B Antibody

Size: 100µg specific antibody in 200µl



Target Protein

Principal Names: PLA2G1B, phospholipase A2, group IB (pancreas), MGC119834, MGC119835, PLA2, PLA2A, PPLA2, phospholipase A2, group IB

Official Symbol: PLA2G1B

Accession Number(s): NP_000919.1

Human GeneID(s): [5319](#)

Non-Human GeneID(s): 18778 (mouse), 29526 (rat)

Immunogen

Peptide with sequence NKAHKNLDTKKYCQS, from the C Terminus of the protein sequence according to NP_000919.1.

Please note the [peptide](#) is available for sale.

Purification and Storage

Purified from goat serum by ammonium sulphate precipitation followed by antigen affinity chromatography using the immunizing peptide.

Supplied at 0.5 mg/ml in Tris saline, 0.02% sodium azide, pH7.3 with 0.5% bovine serum albumin.

Aliquot and store at -20°C. Minimize freezing and thawing.

Applications Tested

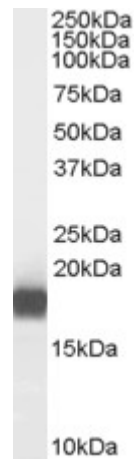
Peptide ELISA: antibody detection limit dilution 1:64000.

Western blot: Approx. 17-18kDa band observed in Human Pancreas lysates (calculated MW of 16.4kDa according to NP_000919.1). In transfected HEK293 transiently expressing PLA2G1B a band of approx. 18kDa is observed. This band is not observed in the non-transfected HEK293. Recommended concentration: 0.01µg/ml.

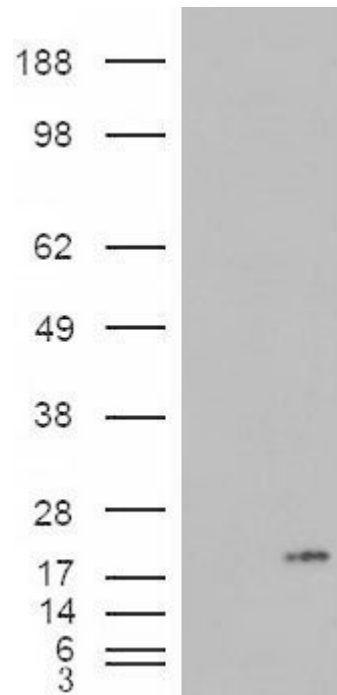
Species Reactivity

Tested: Human

Expected from sequence similarity: Human, Dog



EB08032 (0.01 μ g/ml) staining of Human Pancreas lysate (35 μ g protein in RIPA buffer). Primary incubation was 1 hour. Detected by chemiluminescence.



HEK293 overexpressing PLA2G1B (RC216089) and probed with EB08032 (mock transfection in first lane), tested by Origene.