

UK Office

Everest Biotech Ltd

Cherwell Innovation Centre
77 Heyford Park
Upper Heyford
Oxfordshire
OX25 5HD
UK

Enquiries:

info@everestbiotech.com

Sales:

sales@everestbiotech.com

Tech support:

support@everestbiotech.com

Tel: +44 (0)1869 238326

www.everestbiotech.com

**Research Use Only. Not for
diagnostic or therapeutic use.**

EB09726 - Goat Anti-PINX1 (aa225-237) Antibody

Size: 100µg specific antibody in 200µl



Target Protein

Principal Names: PINX1, FLJ20565, LPTL, LPTS, MGC8850, 67-11-3 protein, hepatocellular carcinoma-related putative tumor suppressor, PIN2-interacting protein 1, Pin2-interacting protein X1

Official Symbol: PINX1

Accession Number(s): NP_060354.4

Human GeneID(s): [54984](#)

Immunogen

Peptide with sequence C-ESYLQPKAKRHTE, from the internal region of the protein sequence according to NP_060354.4.

Please note the [peptide](#) is available for sale.

Purification and Storage

Purified from goat serum by ammonium sulphate precipitation followed by antigen affinity chromatography using the immunizing peptide.

Supplied at 0.5 mg/ml in Tris saline, 0.02% sodium azide, pH7.3 with 0.5% bovine serum albumin.

Aliquot and store at -20°C. Minimize freezing and thawing.

Applications Tested

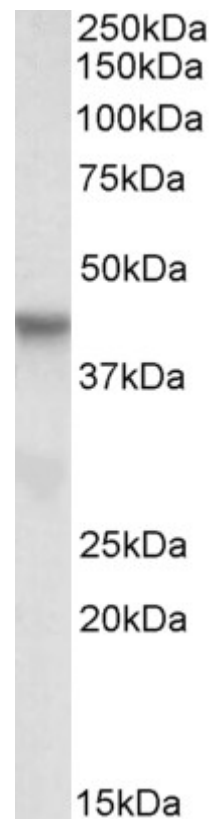
Peptide ELISA: antibody detection limit dilution 1:16000.

Western blot: Approx 40kDa band observed in lysates of cell lines A549, HepG2 and K562 (calculated MW of 37.0kDa according to NP_060354.4). Recommended concentration: 0.3-1µg/ml.

Species Reactivity

Tested: Human

Expected from sequence similarity: Human



EB09726 (0.3 μ g/ml) staining of HepG2 lysate (35 μ g protein in RIPA buffer). Primary incubation was 1 hour.
Detected by chemiluminescence.