

## UK Office

### Everest Biotech Ltd

Cherwell Innovation Centre  
77 Heyford Park  
Upper Heyford  
Oxfordshire  
OX25 5HD  
UK

Enquiries:

[info@everestbiotech.com](mailto:info@everestbiotech.com)

Sales:

[sales@everestbiotech.com](mailto:sales@everestbiotech.com)

Tech support:

[support@everestbiotech.com](mailto:support@everestbiotech.com)

Tel: +44 (0)1869 238326

[www.everestbiotech.com](http://www.everestbiotech.com)

**Research Use Only. Not for  
diagnostic or therapeutic use.**

## EB08585 - Goat Anti-PHF11 Antibody

Size: 100µg specific antibody in 200µl



### Target Protein

**Principal Names:** PHF11, PHD finger protein 11, APY, BCAP, IGEL, IGER, IGHER, NY-REN-34, NYREN34, RP11-185C18.3, IgE responsiveness (atopic), NY-REN-34 antigen

**Official Symbol:** PHF11

**Accession Number(s):** NP\_001035533.1; NP\_001035534.1

**Human GeneID(s):** [51131](#)

**Important Comments:** This antibody is expected to recognize both reported isoforms (NP\_001035533.1; NP\_001035534.1).

### Immunogen

Peptide with sequence C-KIHASQQRWQQLKE, from the internal region of the protein sequence according to NP\_001035533.1; NP\_001035534.1.

Please note the [peptide](#) is available for sale.

### Purification and Storage

Purified from goat serum by ammonium sulphate precipitation followed by antigen affinity chromatography using the immunizing peptide.

Supplied at 0.5 mg/ml in Tris saline, 0.02% sodium azide, pH7.3 with 0.5% bovine serum albumin.

Aliquot and store at -20°C. Minimize freezing and thawing.

### Applications Tested

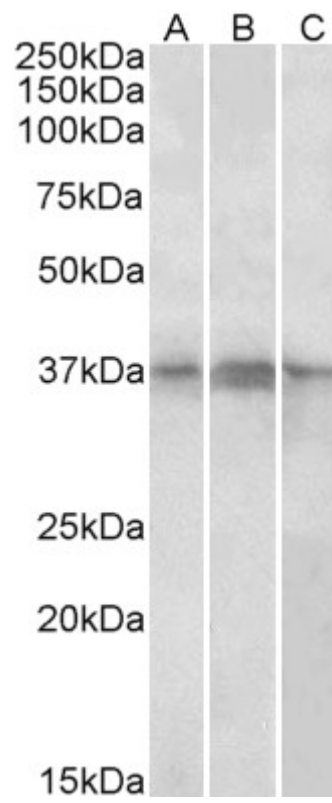
**Peptide ELISA:** antibody detection limit dilution 1:16000.

**Western blot:** Approx 37kDa band observed in nuclear lysates of cell lines Daudi, Jurkat and Jurkat (calculated MW of 37.6kDa according to NP\_001035533.1). Recommended concentration: 1-3µg/ml.

### Species Reactivity

**Tested:** Human

**Expected from sequence similarity:** Human



EB08585 (1 µg/ml) staining of Daudi, (A) Jurkat (B) and Jurkat nuclear (C) lysates (35 µg protein in RIPA buffer).  
Primary incubation was 1 hour. Detected by chemiluminescence