

## UK Office

### Everest Biotech Ltd

Cherwell Innovation Centre  
77 Heyford Park  
Upper Heyford  
Oxfordshire  
OX25 5HD  
UK

Enquiries:

[info@everestbiotech.com](mailto:info@everestbiotech.com)

Sales:

[sales@everestbiotech.com](mailto:sales@everestbiotech.com)

Tech support:

[support@everestbiotech.com](mailto:support@everestbiotech.com)

Tel: +44 (0)1869 238326

[www.everestbiotech.com](http://www.everestbiotech.com)

**Research Use Only. Not for  
diagnostic or therapeutic use.**

## EB11885 - Goat Anti-perilipin 3 / TIP47 (aa154-167) Antibody

Size: 100µg specific antibody in 200µl



### Target Protein

**Principal Names:** PLIN3, perilipin 3, M6PRBP1, MGC11117, MGC2012, PP17, TIP47, 47 kDa MPR-binding protein, cargo selection protein TIP47, mannose-6-phosphate receptor-binding protein 1, perilipin-3, placental protein 17, tail-interacting protein, 47 kD

**Official Symbol:** PLIN3

**Accession Number(s):** NP\_005808.3; NP\_001157661.1; NP\_001157666.1

**Human GeneID(s):** [10226](#)

**Important Comments:** This antibody is expected to recognize all reported isoforms (NP\_005808.3; NP\_001157661.1; NP\_001157666.1).

### Immunogen

Peptide with sequence C-TRGAVQSGVDKTKS, from the internal region of the protein sequence according to NP\_005808.3; NP\_001157661.1; NP\_001157666.1.

Please note the [peptide](#) is available for sale.

### Purification and Storage

Purified from goat serum by ammonium sulphate precipitation followed by antigen affinity chromatography using the immunizing peptide.

Supplied at 0.5 mg/ml in Tris saline, 0.02% sodium azide, pH7.3 with 0.5% bovine serum albumin.

Aliquot and store at -20°C. Minimize freezing and thawing.

### Applications Tested

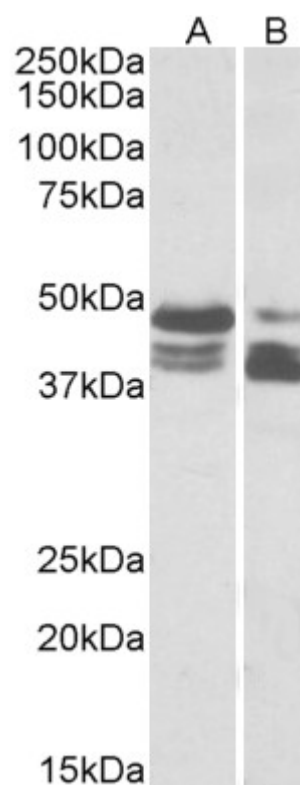
**Peptide ELISA:** antibody detection limit dilution 1:128000.

**Western blot:** Approx 48kDa+45kDa double bands observed in lysates of cell line HeLa and of Human Colon cancer (calculated MW of 47.1kDa according to NP\_NP\_005808.3, 46.9kDa according to NP\_001157661.1 and 45.8kDa according to NP\_001157666.1). The observed bands represent the three different isoforms. Please note the difference in band pattern intensities between HeLa and Colon cancer lysates. Recommended concentration: 0.03-0.1µg/ml.

### Species Reactivity

**Tested:** Human

**Expected from sequence similarity:** Human



EB11885 (0.03µg/ml) staining of HeLa (lane 1) and Human Colon cancer (lane two) lysate (35µg protein in RIPA buffer). Primary incubation was 1 hour. Detected by chemiluminescence.