

## UK Office

### Everest Biotech Ltd

Cherwell Innovation Centre  
77 Heyford Park  
Upper Heyford  
Oxfordshire  
OX25 5HD  
UK

Enquiries:

[info@everestbiotech.com](mailto:info@everestbiotech.com)

Sales:

[sales@everestbiotech.com](mailto:sales@everestbiotech.com)

Tech support:

[support@everestbiotech.com](mailto:support@everestbiotech.com)

Tel: +44 (0)1869 238326

[www.everestbiotech.com](http://www.everestbiotech.com)

**Research Use Only. Not for  
diagnostic or therapeutic use.**

## EB10881 - Goat Anti-PDIA2 (aa129-141) Antibody

Size: 100µg specific antibody in 200µl



### Target Protein

**Principal Names:** PDIA2, protein disulfide isomerase family A, member 2, LA16c-314G4.2, PDA2, PDI, PDIP, PDIR, OTTHUMP00000067350, OTTHUMP00000197166, Rho GDP dissociation inhibitor gamma, pancreas-specific protein disulfide isomerase, pancreatic protein disulfide isomerase, protein disulfide isomerase A2, protein disulfide isomerase, pancreatic, protein disulfide isomerase-associated 2, protein disulfide-isomerase A2

**Official Symbol:** PDIA2

**Accession Number(s):** NP\_006840.2

**Human GeneID(s):** [64714](#)

**Non-Human GeneID(s):** 69191 (mouse), 287164 (rat)

### Immunogen

Peptide with sequence C-THPEEYTGPRDAE, from the internal region of the protein sequence according to NP\_006840.2.

Please note the [peptide](#) is available for sale.

### Purification and Storage

Purified from goat serum by ammonium sulphate precipitation followed by antigen affinity chromatography using the immunizing peptide.

Supplied at 0.5 mg/ml in Tris saline, 0.02% sodium azide, pH7.3 with 0.5% bovine serum albumin.

Aliquot and store at -20°C. Minimize freezing and thawing.

### Applications Tested

**Peptide ELISA:** antibody detection limit dilution 1:16000.

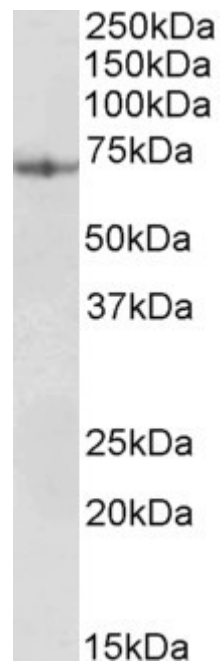
**Western blot:** Approx 70kDa band observed in Human Pancreas lysates (calculated MW of 58.2kDa according to NP\_006840.2). The observed molecular weight corresponds to the glycosylated form. Recommended concentration: 0.03-0.1µg/ml. Primary incubation was 1 hour.

**IHC:** Paraffin embedded Human Pancreas. Recommended concentration: 3.75µg/ml.

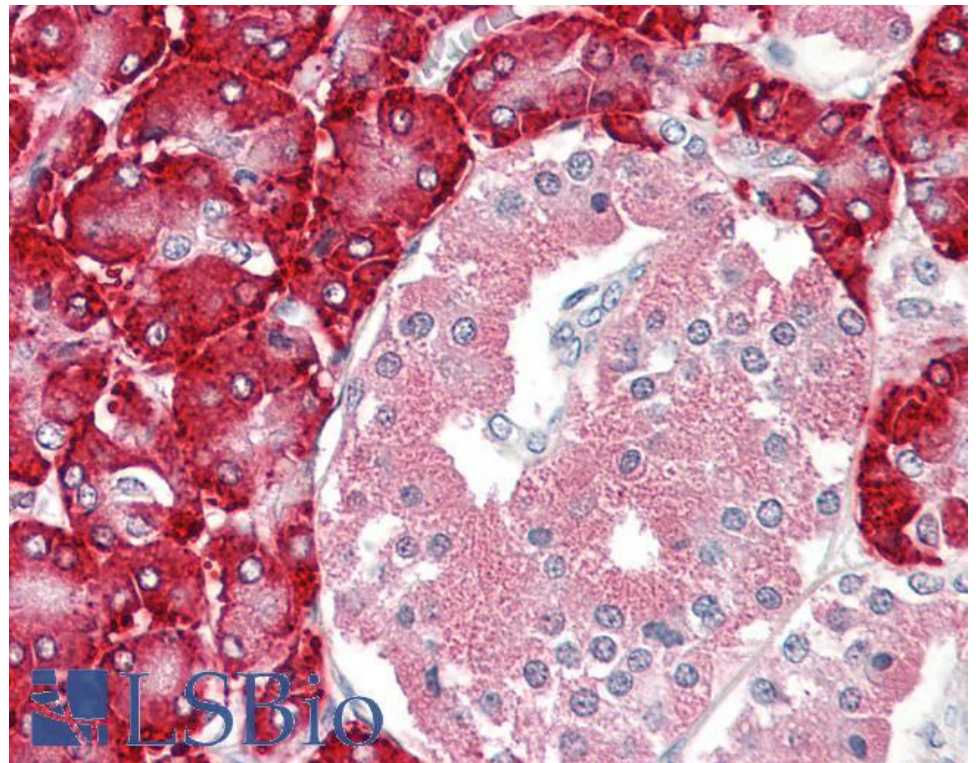
### Species Reactivity

**Tested:** Human

**Expected from sequence similarity:** Human



EB10881(0.03 $\mu$ g/ml) staining of Human Pancreas lysate (35 $\mu$ g protein in RIPA buffer). Detected by chemiluminescence.



EB10881 (3.75 $\mu$ g/ml) staining of paraffin embedded Human Pancreas. Steamed antigen retrieval with citrate buffer Ph 6, AP-staining.