

UK Office

Everest Biotech Ltd

Cherwell Innovation Centre
77 Heyford Park
Upper Heyford
Oxfordshire
OX25 5HD
UK

Enquiries:

info@everestbiotech.com

Sales:

sales@everestbiotech.com

Tech support:

support@everestbiotech.com

Tel: +44 (0)1869 238326

www.everestbiotech.com

**Research Use Only. Not for
diagnostic or therapeutic use.**

EB06753 - Goat Anti-PDCD1 Antibody

Size: 100µg specific antibody in 200µl



Target Protein

Principal Names: PDCD1, programmed cell death 1, HGNC:8760, PD1, SLEB2, hPD-1, hPD-L, programmed death 1, CD279

Official Symbol: PDCD1

Accession Number(s): NP_005009.2

Human GeneID(s): [5133](#)

Immunogen

Peptide with sequence C-GELDFQWREKTPE, from the internal region of the protein sequence according to NP_005009.2.

Please note the [peptide](#) is available for sale.

Purification and Storage

Purified from goat serum by ammonium sulphate precipitation followed by antigen affinity chromatography using the immunizing peptide.

Supplied at 0.5 mg/ml in Tris saline, 0.02% sodium azide, pH7.3 with 0.5% bovine serum albumin.

Aliquot and store at -20°C. Minimize freezing and thawing.

Applications Tested

Peptide ELISA: antibody detection limit dilution 1:128000.

Western blot: Approx 28kDa band observed in Human Bone Marrow lysates (calculated MW of 31.7kDa according to NP_005009.2). Recommended concentration: 1-3µg/ml. Primary incubation was 1 hour.

Species Reactivity

Tested: Human

Expected from sequence similarity: Human, Mouse, Rat, Dog, Cow

Specific Reference

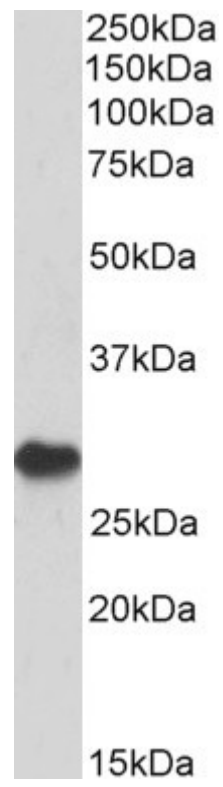
This antibody has been successfully used in Western blot on Human:

Guozhi Xia, Xiaopu Zheng, Xinye Yao, Xiaowei Yao, Zhongwei Liu, Junkui Wang.

Expression of programmed cell death-1 and its ligand B7 homolog 1 in peripheral blood lymphocytes from patients with peripartum cardiomyopathy.

Clin Cardiol. 2016 Dec 27.

PMID: 28026044



EB06753 (1 µg/ml) staining of Human Bone Marrow lysate (35 µg protein in RIPA buffer). Detected by chemiluminescence.