

UK Office

Everest Biotech Ltd

Cherwell Innovation Centre
77 Heyford Park
Upper Heyford
Oxfordshire
OX25 5HD
UK

Enquiries:

info@everestbiotech.com

Sales:

sales@everestbiotech.com

Tech support:

support@everestbiotech.com

Tel: +44 (0)1869 238326

www.everestbiotech.com

**Research Use Only. Not for
diagnostic or therapeutic use.**

EB09173 - Goat Anti-PCQAP / MED15 Antibody

Size: 100µg specific antibody in 200µl



Target Protein

Principal Names: MED15, mediator complex subunit 15, ARC105, CAG7A, CTG7A, DKFZp686A2214, DKFZp762B1216, FLJ42282, FLJ42935, PCQAP, TIG-1, TIG1, TNRC7, CTG repeat protein 7a, PC2 (positive cofactor 2, multiprotein complex) glutamine/Q-rich-associated protein, PC2-glutamine-rich-associated protein, TPA inducible gene-1, TPA inducible protein, activator-recruited cofactor, 105-kD, positive cofactor 2, glutamine/Q-rich-associated protein, trinucleotide repeat containing 7

Official Symbol: MED15

Accession Number(s): NP_001003891.1; NP_056973.2

Human GenelD(s): [51586](#)

Non-Human GenelD(s): 94112 (mouse)

Important Comments: This antibody is expected to recognize both reported isoforms (NP_001003891.1; NP_056973.2).

Immunogen

Peptide with sequence C-PPQSQTQPLVSQAQ, from the internal region of the protein sequence according to NP_001003891.1; NP_056973.2.

Please note the [peptide](#) is available for sale.

Purification and Storage

Purified from goat serum by ammonium sulphate precipitation followed by antigen affinity chromatography using the immunizing peptide.

Supplied at 0.5 mg/ml in Tris saline, 0.02% sodium azide, pH7.3 with 0.5% bovine serum albumin.

Aliquot and store at -20°C. Minimize freezing and thawing.

Applications Tested

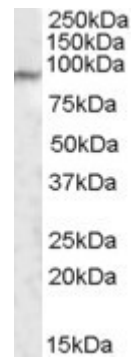
Peptide ELISA: antibody detection limit dilution 1:8000.

Western blot: Approx. 90kDa band observed in Human Lung lysates (calculated MW of 86.8kDa according to NP_001003891.1). Recommended concentration: 1-3µg/ml.

Species Reactivity

Tested: Human

Expected from sequence similarity: Human, Mouse



EB09173 (1µg/ml) staining of Human Lung lysate (35µg protein in RIPA buffer). Primary incubation was 1 hour.
Detected by chemiluminescence.