



UK Office

Everest Biotech Ltd

Cherwell Innovation Centre
77 Heyford Park
Upper Heyford
Oxfordshire
OX25 5HD
UK

Enquiries:

info@everestbiotech.com

Sales:

sales@everestbiotech.com

Tech support:

support@everestbiotech.com

Tel: +44 (0)1869 238326

www.everestbiotech.com

**Research Use Only. Not for
diagnostic or therapeutic use.**

EB11650-B - Goat Anti-PCNA, Biotinylated Antibody

Size: 100µg specific antibody in 200µl



Target Protein

Principal Names: PCNA, proliferating cell nuclear antigen, ATLD2, DNA polymerase delta auxiliary protein, cyclin, MGC8367

Official Symbol: PCNA

Accession Number(s): NP_002583.1

Human GeneID(s): [5111](#)

Non-Human GeneID(s): 18538 (mouse), 25737 (rat)

Important Comments: Reported variants represent identical protein: NP_872590.1, NP_002583.1

Immunogen

Peptide with sequence C-NGNIKLSQTSNVD., from the internal region of the protein sequence according to NP_002583.1.

Please note the [peptide](#) is available for sale.

Purification and Storage

Purified from goat serum by ammonium sulphate precipitation followed by antigen affinity chromatography using the immunizing peptide.

Supplied at 0.5 mg/ml in Tris saline, 0.02% sodium azide, pH7.3 with 0.5% bovine serum albumin.

Aliquot and store at -20°C. Minimize freezing and thawing.

Applications Tested

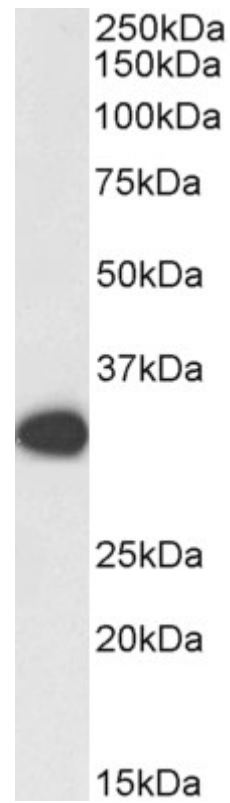
Peptide ELISA: antibody detection limit dilution 1:128000.

Western blot: Approx 30kDa band observed in lysates of cell line HeLa (calculated MW of 28.8kDa according to NP_002583.1). See non-biotinylated parental product's datasheet for further QC data. Recommended concentration: 0.3-1µg/ml.

Species Reactivity

Tested: Human, Mouse, Rat, Pig

Expected from sequence similarity: Human, Mouse, Rat, Dog, Pig, Cow



Biotinylated EB11650 (1µg/ml) staining of HeLa lysate (35µg protein in RIPA buffer), exactly mirroring its parental non-biotinylated product. Primary incubation was 1 hour. Detected by chemiluminescence, using streptavidin-HRP and using NAP blocker as a substitute for skimmed milk.