

## UK Office

### Everest Biotech Ltd

Cherwell Innovation Centre  
77 Heyford Park  
Upper Heyford  
Oxfordshire  
OX25 5HD  
UK

Enquiries:

[info@everestbiotech.com](mailto:info@everestbiotech.com)

Sales:

[sales@everestbiotech.com](mailto:sales@everestbiotech.com)

Tech support:

[support@everestbiotech.com](mailto:support@everestbiotech.com)

Tel: +44 (0)1869 238326

[www.everestbiotech.com](http://www.everestbiotech.com)

**Research Use Only. Not for  
diagnostic or therapeutic use.**

## EB09203 - Goat Anti-PBR (mouse) Antibody

Size: 100µg specific antibody in 200µl



### Target Protein

**Principal Names:** PBR, Tspo, translocator protein, Bzrp, IBP, benzodiazepine receptor, peripheral, isoquinoline-binding protein, peripheral benzodiazepine receptor

**Official Symbol:** Tspo

**Accession Number(s):** NP\_033905.3

**Non-Human GeneID(s):** 12257 (mouse), 24230 (rat)

### Immunogen

Peptide with sequence C-RDNSGRRGGSRLPE, from the C Terminus of the protein sequence according to NP\_033905.3.

Please note the [peptide](#) is available for sale.

### Purification and Storage

Purified from goat serum by ammonium sulphate precipitation followed by antigen affinity chromatography using the immunizing peptide.

Supplied at 0.5 mg/ml in Tris saline, 0.02% sodium azide, pH7.3 with 0.5% bovine serum albumin.

Aliquot and store at -20°C. Minimize freezing and thawing.

### Applications Tested

**Peptide ELISA:** antibody detection limit dilution 1:64000.

**Western blot:** Approx. 17+18kDa doublet band observed in cell lysates of NIH3T3 and 16+17kDa in Rat Adrenal Gland lysates, and approx 17kDa in Mouse Kidney lysates (calculated MW of 18.8kDa according to Mouse NP\_033905.3 and 18.9kDa according to Rat NP\_036647.1). Recommended concentration: 0.1-0.3µg/ml. Primary incubation 1 hour at room temperature.

**Immunofluorescence:** Strong expression of the protein seen in the nuclear membrane and cytoplasm of NIH3T3 and HeLa cells. Recommended concentration: 10µg/ml.

**Flow Cytometry:** Flow cytometric analysis of NIH3T3 cells. Recommended concentration: 10ug/ml.

### Species Reactivity

**Tested:** Human, Mouse, Rat

**Expected from sequence similarity:** Mouse, Rat, Human

### Specific Reference

**This antibody has been successfully used in Western blot on Mouse:**

Morgan JA, Cheepala SB, Wang Y, Neale G, Adachi M, Nachagari D, Leggas M, Zhao W, Boyd K, Venkataramanan R, Schuetz JD.

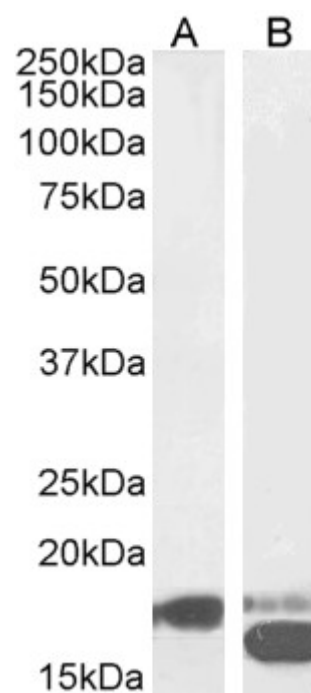
Deregulated hepatic metabolism exacerbates impaired testosterone production in Mrp4-deficient mice.

J Biol Chem. 2012 Apr 27;287(18):14456-66.

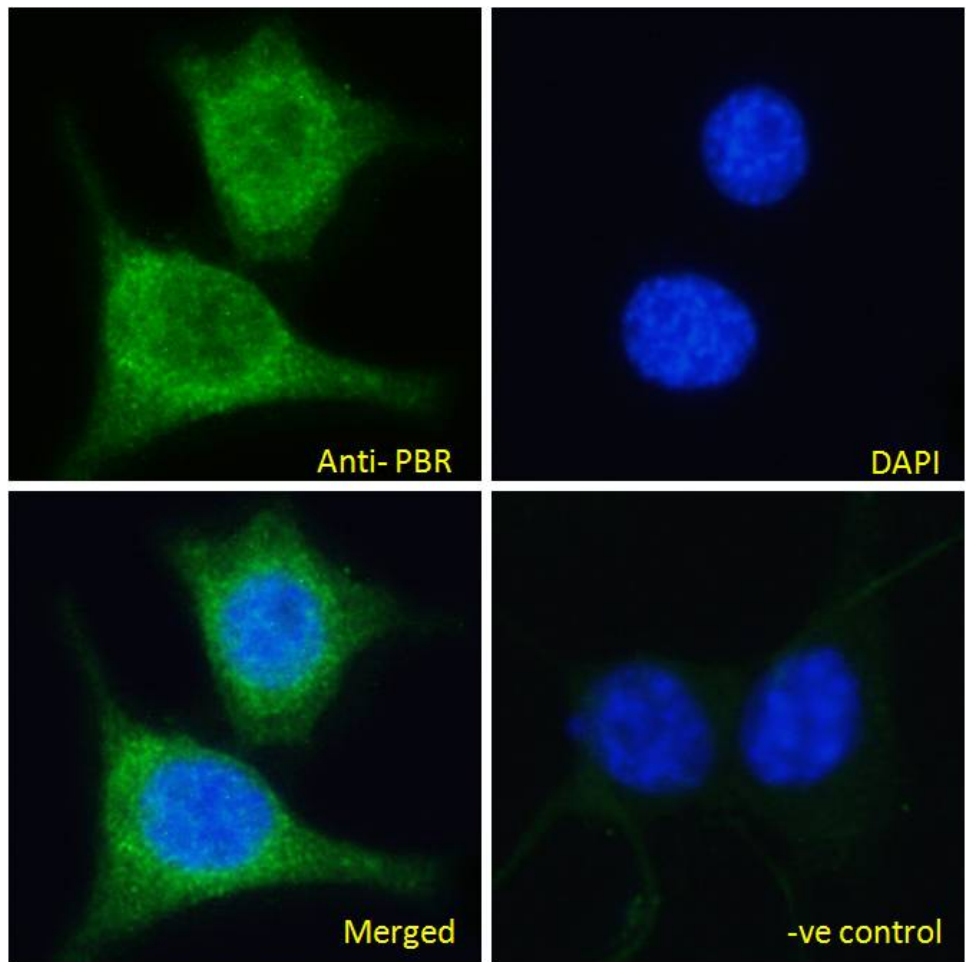
PMID: 22375007



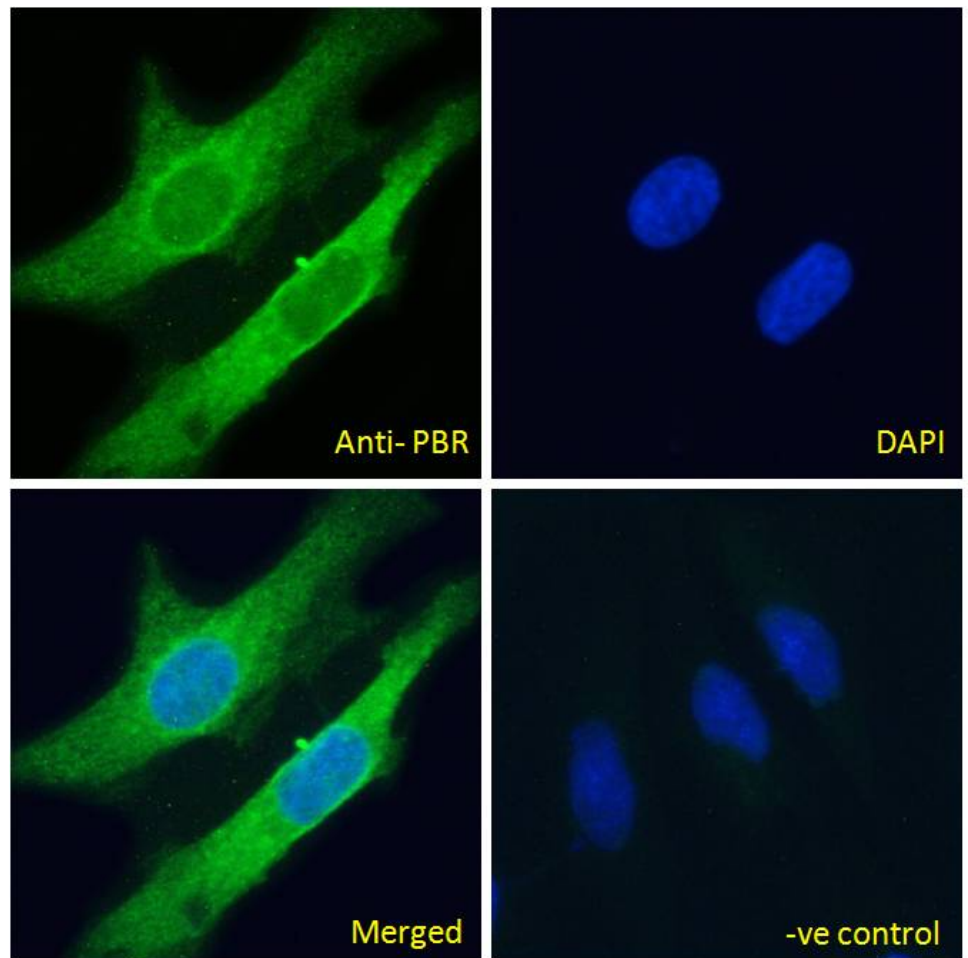
EB09203 (0.1µg/ml) staining of NIH3T3 cell lysate (35µg protein in RIPA buffer). Detected by chemiluminescence.



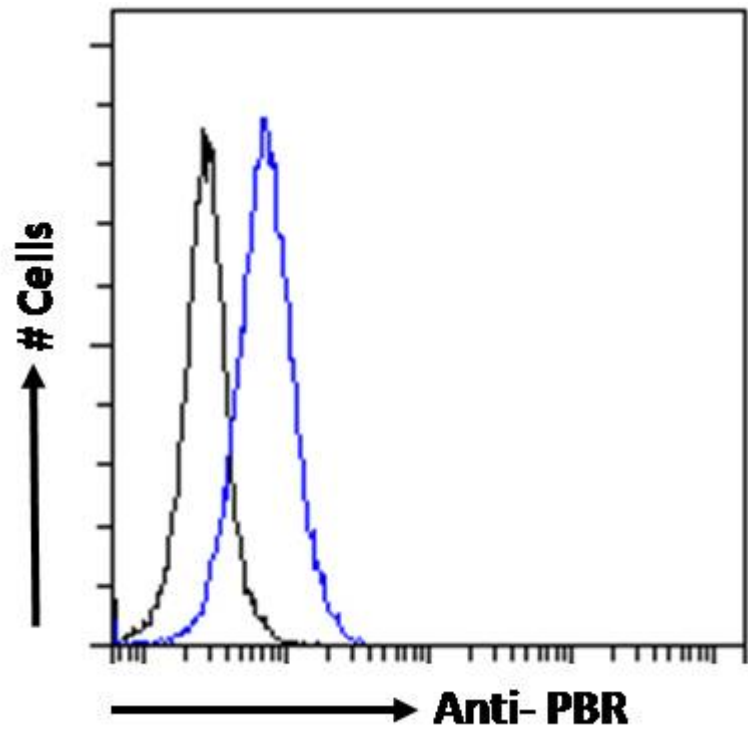
EB09203 (0.3µg/ml) staining of Mouse Kidney (A) and Rat Adrenal Gland (B) lysate (35µg protein in RIPA buffer). Detected by chemiluminescence.



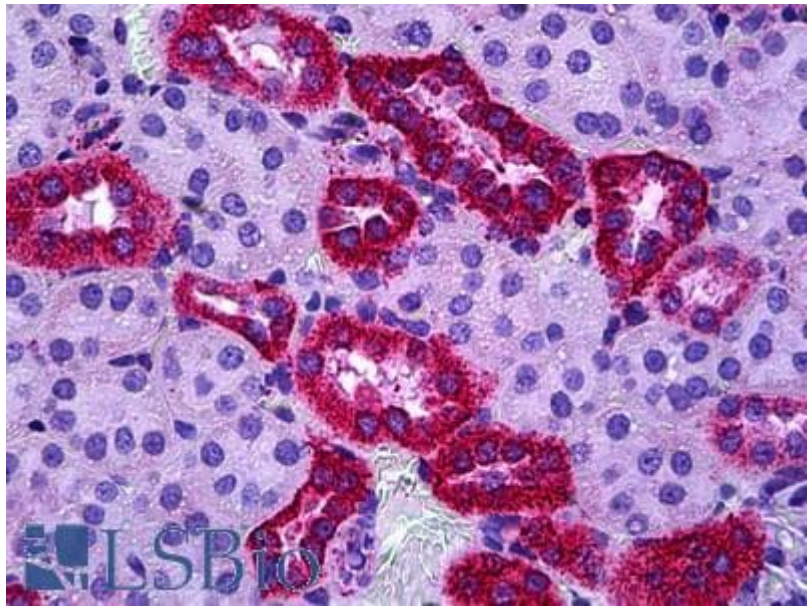
EB09203 Immunofluorescence analysis of paraformaldehyde fixed NIH3T3 cells, permeabilized with 0.15% Triton. Primary incubation 1hr (10ug/ml) followed by Alexa Fluor 488 secondary antibody (2ug/ml), showing nuclear membrane and cytoplasmic staining. The nuclear stain is DAPI (blue). Negative control: Unimmunized goat IgG (10ug/ml) followed by Alexa Fluor 488 secondary antibody (2ug/ml).



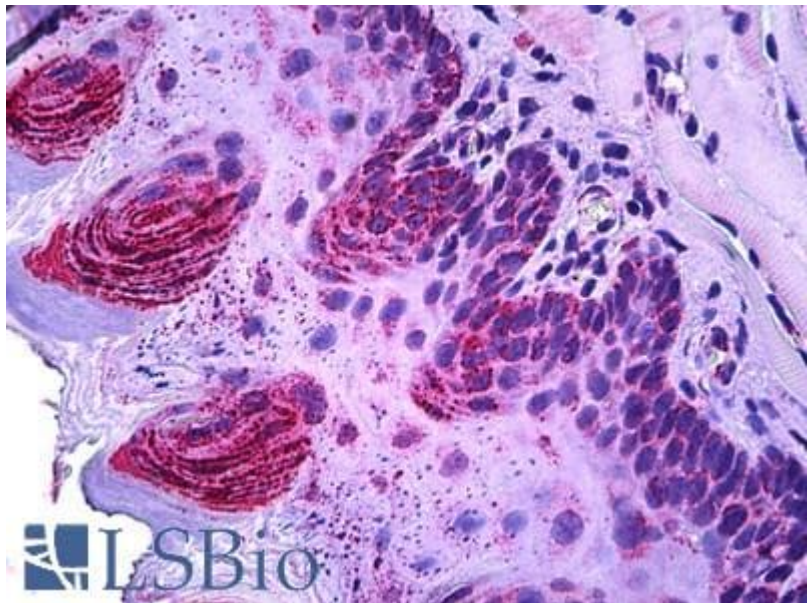
EB09203 Immunofluorescence analysis of paraformaldehyde fixed HeLa cells, permeabilized with 0.15% Triton. Primary incubation 1hr (10ug/ml) followed by Alexa Fluor 488 secondary antibody (2ug/ml), showing nuclear membrane and cytoplasmic staining. The nuclear stain is DAPI (blue). Negative control: Unimmunized goat IgG (10ug/ml) followed by Alexa Fluor 488 secondary antibody (2ug/ml).



EB09203 Flow cytometric analysis of paraformaldehyde fixed NIH3T3 cells (blue line), permeabilized with 0.5% Triton. Primary incubation 1hr (10ug/ml) followed by Alexa Fluor 488 secondary antibody (1ug/ml). IgG control: Unimmunized goat IgG (black line) followed by Alexa Fluor 488 secondary antibody.

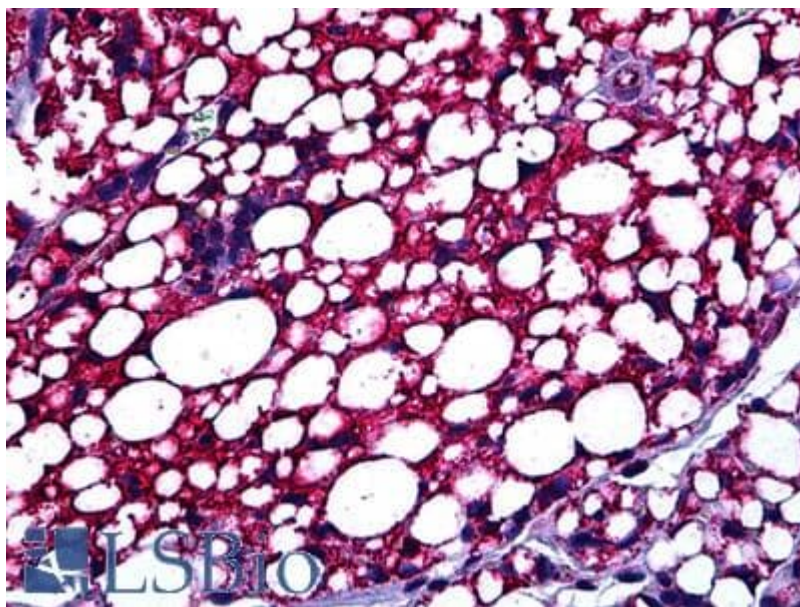


EB09203 (3.75µg/ml) staining of paraffin embedded Human Renal Tubules. Steamed antigen retrieval with citrate buffer pH 6, AP-staining. **This data is from a previous batch, not on sale.**



B09203 (3.75µg/ml) staining of paraffin embedded Human Squamous Epithelium. Steamed antigen retrieval with citrate buffer Ph 6, AP-staining. **This data is from a previous batch, not on sale.**





B09203 (3.75µg/ml) staining of paraffin embedded Human Adipose. Steamed antigen retrieval with citrate buffer pH 6, AP-staining. **This data is from a previous batch, not on sale.**