

UK Office

Everest Biotech Ltd

Cherwell Innovation Centre
77 Heyford Park
Upper Heyford
Oxfordshire
OX25 5HD
UK

Enquiries:

info@everestbiotech.com

Sales:

sales@everestbiotech.com

Tech support:

support@everestbiotech.com

Tel: +44 (0)1869 238326

www.everestbiotech.com

**Research Use Only. Not for
diagnostic or therapeutic use.**

EB06805 - Goat Anti-Pancreatic Polypeptide / PPY Antibody

Size: 100µg specific antibody in 200µl



Target Protein

Principal Names: PPY, pancreatic polypeptide, HGNC:9327, PNP, pancreatic polypeptide Y

Official Symbol: PPY

Accession Number(s): NP_002713.1

Human GeneID(s): [5539](#)

Immunogen

Peptide with sequence C-TRPRYGKRHKEDT, from the internal region of the protein sequence according to NP_002713.1.

Please note the [peptide](#) is available for sale.

Purification and Storage

Purified from goat serum by ammonium sulphate precipitation followed by antigen affinity chromatography using the immunizing peptide.

Supplied at 0.5 mg/ml in Tris saline, 0.02% sodium azide, pH7.3 with 0.5% bovine serum albumin.

Aliquot and store at -20°C. Minimize freezing and thawing.

Applications Tested

Peptide ELISA: antibody detection limit dilution 1:32000.

Western blot: Preliminary experiments gave an approx 35-38kDa band in Human Pancreas lysates after 1µg/ml antibody staining. Please note that currently we cannot find an explanation in the literature for the band we observe given the calculated size of 10.5kDa according to NP_002713.1. The 38kDa band was successfully blocked by incubation with the immunizing peptide.

IHC: In paraffin embedded Human Pancreas, shows strong cytoplasmic staining of rare cells located at the periphery of islets of Langerhans. Recommended concentration: 3µg/ml. Paraffin embedded Human Pancreas and Intestine. Recommended concentration: 5µg/ml.

Species Reactivity

Tested: Human

Expected from sequence similarity: Human, Mouse, Rat, Dog

Specific References

This antibody has been successfully used in IF on Rat:

Md Moin AS, Dhawan S, Cory M, Butler PC, Rizza RA, Butler AE.

Increased Frequency of Hormone Negative and Polyhormonal Endocrine Cells in Lean Individuals With Type 2 Diabetes.

J Clin Endocrinol Metab. 2016 Oct;101(10)

PMID: 27472443

This antibody has been successfully used in IHC on Human:

Butler AE, Dhawan S, Hoang J, Cory M, Zeng K, Fritsch H, Meier JJ, Rizza RA, Butler PC.

β-Cell Deficit in Obese Type 2 Diabetes, a Minor Role of

β-Cell Dedifferentiation and Degranulation.

J Clin Endocrinol Metab. 2016 Feb;101(2):523-32.

PMID: 26700560

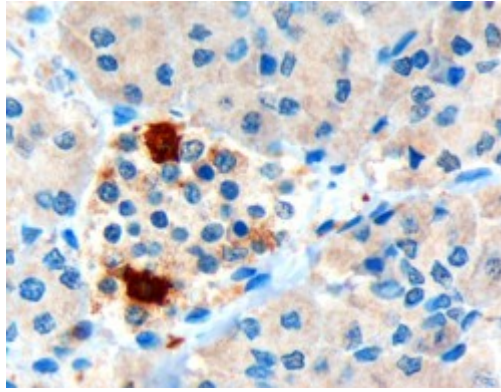
This antibody has been successfully used in Western blot on Human:

F. Aragón, M. Karaca, A. Novials, R.Maldonadoa, P. Maechler, and B. Rubí.

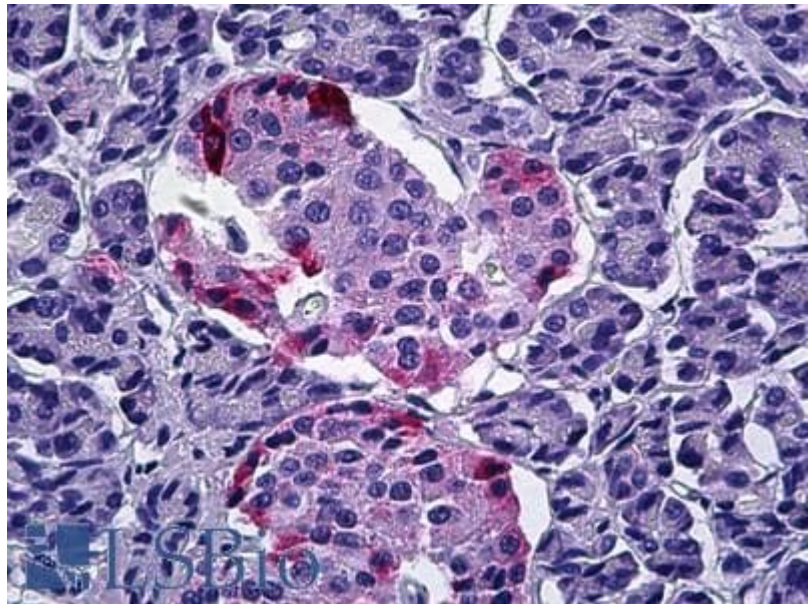
Pancreatic polypeptide regulates glucagon release through PPYR1 receptors expressed in mouse and human alpha-cells.

Biochim Biophys Acta. 2015 Feb;1850(2):343-51.

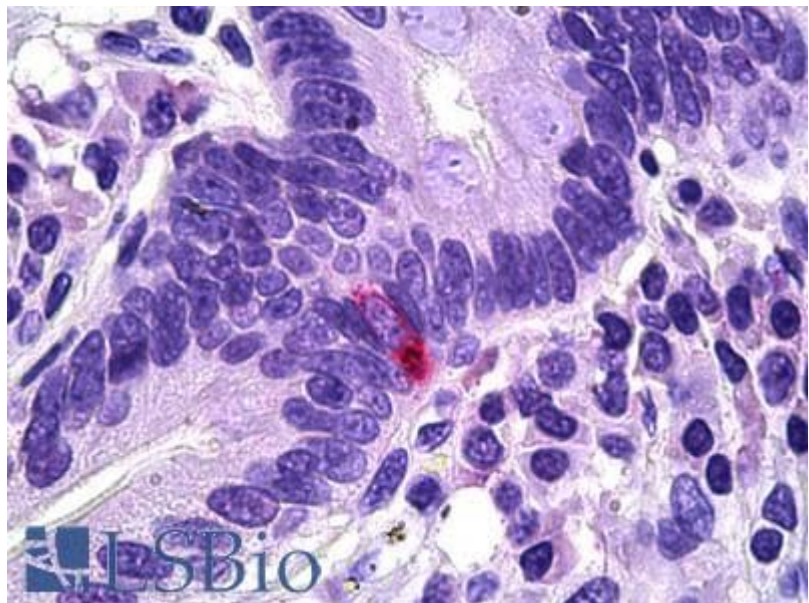
PMID: 25445712



EB06805 (3µg/ml) staining of paraffin embedded Human Pancreas. Microwaved antigen retrieval with Tris/EDTA buffer Ph9, HRP-staining.



EB06805 (5µg/ml) staining of paraffin embedded Human Pancreas. Steamed antigen retrieval with citrate buffer pH 6, AP-staining.



EB06805 (5µg/ml) staining of paraffin embedded Human Intestine. Steamed antigen retrieval with citrate buffer pH 6, AP-staining.