

## UK Office

### Everest Biotech Ltd

Cherwell Innovation Centre  
77 Heyford Park  
Upper Heyford  
Oxfordshire  
OX25 5HD  
UK

Enquiries:

[info@everestbiotech.com](mailto:info@everestbiotech.com)

Sales:

[sales@everestbiotech.com](mailto:sales@everestbiotech.com)

Tech support:

[support@everestbiotech.com](mailto:support@everestbiotech.com)

Tel: +44 (0)1869 238326

[www.everestbiotech.com](http://www.everestbiotech.com)

**Research Use Only. Not for  
diagnostic or therapeutic use.**

## EB06599-B - Goat Anti-pan ADH, Biotinylated Antibody

Size: 100µg specific antibody in 200µl



### Target Protein

**Principal Names:** pan ADH, ADH, beta subunit, ADH1B, ADH2, alcohol dehydrogenase 1B (class I), beta polypeptide, alcohol dehydrogenase 2, alcohol dehydrogenase 2 (class I), beta polypeptide, alcohol dehydrogenase IB (class I), beta polypeptide, aldehyde reductase

**Official Symbol:** ADH1A, B, C

**Accession Number(s):** NP\_000658.1; NP\_000659.2; NP\_000660.1

**Human GeneID(s):** [124](#) , [125](#)

**Important Comments:** This antibody is expected to recognise the alpha (ADH1A, NP\_000658.1), the beta (ADH1B, NP\_000659.2) and gamma (ADH1C, NP\_000660.1) polypeptide variants of human alcohol dehydrogenase.

### Immunogen

Peptide with sequence STAGKVMKCKA., from the N Terminus of the protein sequence according to NP\_000658.1; NP\_000659.2; NP\_000660.1.

Please note the [peptide](#) is available for sale.

### Purification and Storage

Purified from goat serum by ammonium sulphate precipitation followed by antigen affinity chromatography using the immunizing peptide.

Supplied at 0.5 mg/ml in Tris saline, 0.02% sodium azide, pH7.3 with 0.5% bovine serum albumin.

Aliquot and store at -20°C. Minimize freezing and thawing.

### Applications Tested

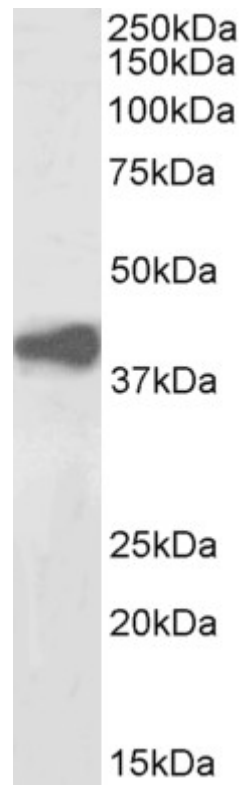
**Peptide ELISA:** antibody detection limit dilution 1:8000.

**Western blot:** Approx 39kDa band observed in Human Liver lysates (calculated MW of 39.9kDa according to NP\_000658.1). See non-biotinylated parental product's datasheet for further QC data. Recommended concentration: 1-3µg/ml.

### Species Reactivity

**Tested:** Human

**Expected from sequence similarity:** Human, Mouse, Rat



Biotinylated EB06599 (2 $\mu$ g/ml) staining of Human Liver lysate (35 $\mu$ g protein in RIPA buffer), exactly mirroring its parental non-biotinylated product. Primary incubation was 1 hour. Detected by chemiluminescence, using streptavidin-HRP and using NAP blocker as a substitute for skimmed milk.