

UK Office

Everest Biotech Ltd

Cherwell Innovation Centre
77 Heyford Park
Upper Heyford
Oxfordshire
OX25 5HD
UK

Enquiries:

info@everestbiotech.com

Sales:

sales@everestbiotech.com

Tech support:

support@everestbiotech.com

Tel: +44 (0)1869 238326

www.everestbiotech.com

**Research Use Only. Not for
diagnostic or therapeutic use.**

EB06226 - Goat Anti-PALS2 / VAM1 / MPP6 Antibody

Size: 100µg specific antibody in 200µl



Target Protein

Principal Names: MPP6, VAM1, p55T, VAM-1, membrane protein, palmitoylated 6 (MAGUK p55 subfamily member 6), MAGUK protein p55T, VELI-associated MAGUK 1, protein associated with Lin7 2, PALS2

Official Symbol: MPP6

Accession Number(s): NP_057531.2

Human GeneID(s): [51678](#)

Non-Human GeneID(s): 56524 (mouse)

Immunogen

Peptide with sequence QQVLENLTLPSS-C, from the N Terminus of the protein sequence according to NP_057531.2.

Please note the [peptide](#) is available for sale.

Purification and Storage

Purified from goat serum by ammonium sulphate precipitation followed by antigen affinity chromatography using the immunizing peptide.

Supplied at 0.5 mg/ml in Tris saline, 0.02% sodium azide, pH7.3 with 0.5% bovine serum albumin.

Aliquot and store at -20°C. Minimize freezing and thawing.

Applications Tested

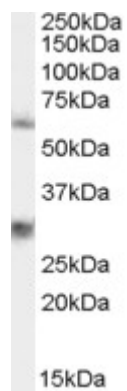
Peptide ELISA: antibody detection limit dilution 1:128000.

Western blot: Approx 60kDa band observed in lysates of cell line HEK293 (calculated MW of 61.1kDa according to NP_057531.2). Recommended concentration: 0.3-1µg/ml. An additional band of unknown identity was also consistently observed at 28kDa. This band was successfully blocked by incubation with the immunising peptide. We would appreciate any feedback from people in the field - have any such results been reported with other antibodies/lysates? Have any further splice variants/modified forms been reported?

Species Reactivity

Tested: Human

Expected from sequence similarity: Human, Mouse, Rat, Dog, Pig, Cow



EB06226 staining (0.3µg/ml) of 293 lysate (RIPA buffer, 35µg total protein per lane). Primary incubated for 1 hour. Detected by western blot using chemiluminescence.