

UK Office

Everest Biotech Ltd

Cherwell Innovation Centre
77 Heyford Park
Upper Heyford
Oxfordshire
OX25 5HD
UK

Enquiries:

info@everestbiotech.com

Sales:

sales@everestbiotech.com

Tech support:

support@everestbiotech.com

Tel: +44 (0)1869 238326

www.everestbiotech.com

**Research Use Only. Not for
diagnostic or therapeutic use.**

EB06720-B - Goat Anti-PAI1 / SERPINE1, Biotinylated Antibody

Size: 100µg specific antibody in 200µl



Target Protein

Principal Names: SERPINE1, serpin peptidase inhibitor, clade E (nexin, plasminogen activator inhibitor type 1), member 1, PAI, PAI-1, PAI1, PLANH1, endothelial plasminogen activator inhibitor, serine (or cysteine) proteinase inhibitor, clade E (nexin, plasminogen activator inhibitor type 1), member 1, serpin E1

Official Symbol: SERPINE1

Accession Number(s): NP_000593.1

Human GeneID(s): [5054](#)

Immunogen

Peptide with sequence C-GFKIDDKGMAPALRH., from the internal region of the protein sequence according to NP_000593.1.

Please note the [peptide](#) is available for sale.

Purification and Storage

Purified from goat serum by ammonium sulphate precipitation followed by antigen affinity chromatography using the immunizing peptide.

Supplied at 0.5 mg/ml in Tris saline, 0.02% sodium azide, pH7.3 with 0.5% bovine serum albumin.

Aliquot and store at -20°C. Minimize freezing and thawing.

Applications Tested

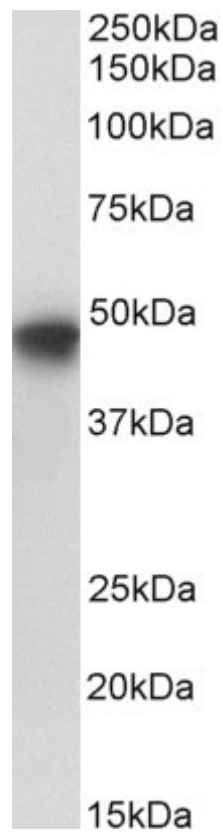
Peptide ELISA: antibody detection limit dilution 1:64000.

Western blot: Approx 47kDa band observed in lysates of cell line HepG2 (calculated MW of 45.1kDa according to NP_000593.1). The observed molecular weights correspond to earlier findings with different antibodies from other commercial sources. See non-biotinylated parental product's datasheet for further QC data. Recommended concentration: 0.1-0.3µg/ml.

Species Reactivity

Tested: Human

Expected from sequence similarity: Human



Biotinylated EB06720 (0.2 μ g/ml) staining of HepG2 lysate (35 μ g protein in RIPA buffer), exactly mirroring its parental non-biotinylated product. Primary incubation was 1 hour. Detected by chemiluminescence, using streptavidin-HRP and using NAP blocker as a substitute for skimmed milk.