

## UK Office

### Everest Biotech Ltd

Cherwell Innovation Centre  
77 Heyford Park  
Upper Heyford  
Oxfordshire  
OX25 5HD  
UK

Enquiries:

[info@everestbiotech.com](mailto:info@everestbiotech.com)

Sales:

[sales@everestbiotech.com](mailto:sales@everestbiotech.com)

Tech support:

[support@everestbiotech.com](mailto:support@everestbiotech.com)

Tel: +44 (0)1869 238326

[www.everestbiotech.com](http://www.everestbiotech.com)

**Research Use Only. Not for  
diagnostic or therapeutic use.**

## EB05269 - Goat Anti-PACSIN1 Antibody

Size: 100µg specific antibody in 200µl



### Target Protein

**Principal Names:** PACSIN1, protein kinase C and casein kinase substrate in neurons 1, KIAA1379, SDPI, syndapin I

**Official Symbol:** PACSIN1

**Accession Number(s):** NP\_065855.1

**Human GeneID(s):** [29993](#)

**Important Comments:** Reported variants represent identical protein (NP\_065855.1; NP\_001186512.1).

### Immunogen

Peptide with sequence SSSYDEASLAPEET-C, from the N Terminus of the protein sequence according to NP\_065855.1.

Please note the [peptide](#) is available for sale.

### Purification and Storage

Purified from goat serum by ammonium sulphate precipitation followed by antigen affinity chromatography using the immunizing peptide.

Supplied at 0.5 mg/ml in Tris saline, 0.02% sodium azide, pH7.3 with 0.5% bovine serum albumin.

Aliquot and store at -20°C. Minimize freezing and thawing.

### Applications Tested

**Peptide ELISA:** antibody detection limit dilution 1:32000.

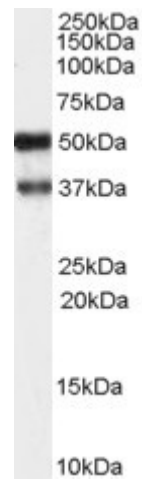
**Western blot:** Approx 50kDa band observed in Human Brain (Hippocampus) lysates (calculated MW of 51.1kDa according to NP\_065855.1). Recommended concentration: 0.03-0.1µg/ml. An additional band of unknown identity was also consistently observed at 37kDa. This band was successfully blocked by incubation with the immunising peptide.

**IHC:** Paraffin embedded Human Brain (Cortex and Cerebellum). Recommended concentration: 2.5µg/ml.

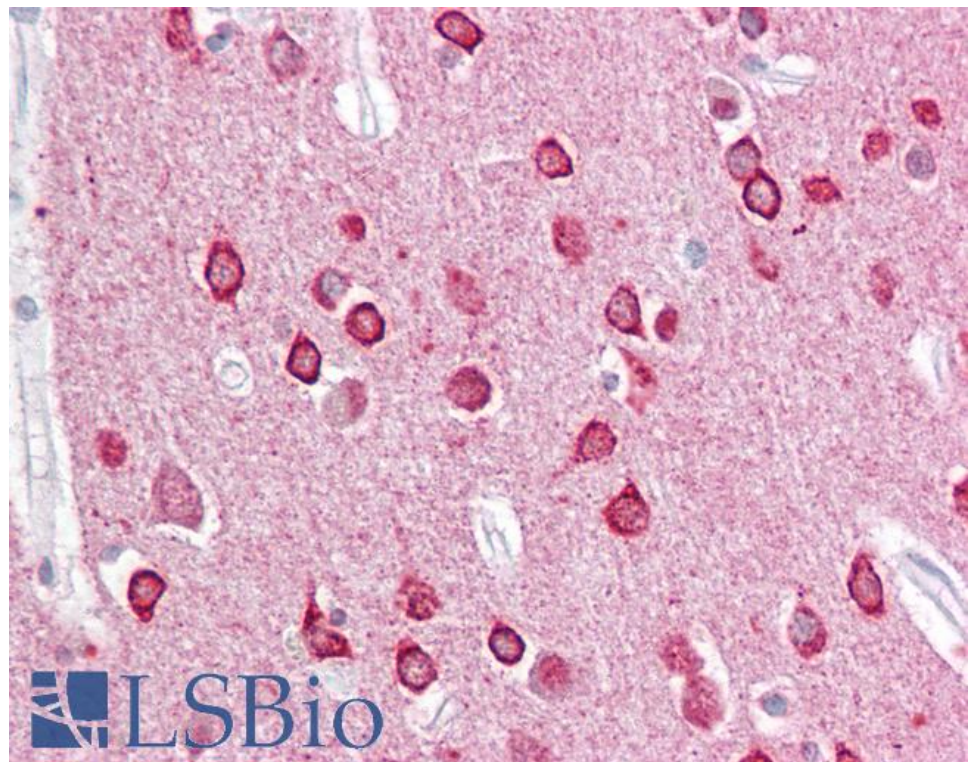
### Species Reactivity

**Tested:** Human

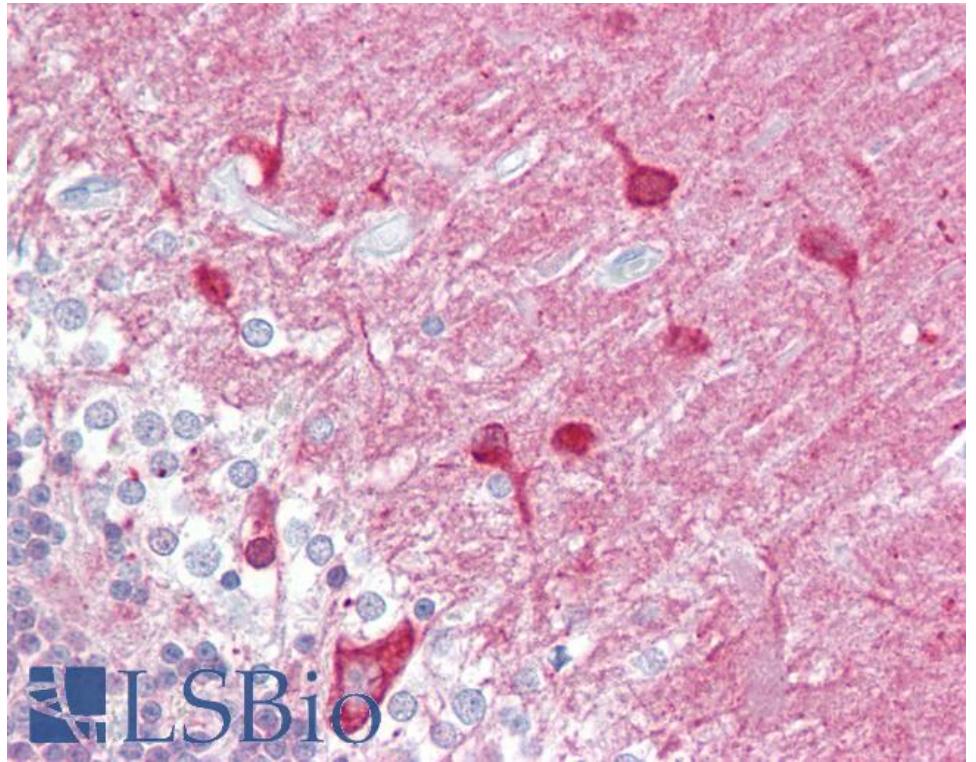
**Expected from sequence similarity:** Human, Dog, Pig, Cow



EB05269 (1 $\mu$ g/ml) staining of Hippocampus) lysate (35 $\mu$ g protein in RIPA buffer). Primary incubation was 1 hour.  
Detected by chemiluminescence.



EB05269 (2.5 $\mu$ g/ml) staining of paraffin embedded Human Cortex. Steamed antigen retrieval with citrate buffer pH 6, AP-staining.



EB05269 (2.5µg/ml) staining of paraffin embedded Human Cerebellum. Steamed antigen retrieval with citrate buffer pH 6, AP-staining.