

UK Office

Everest Biotech Ltd

Cherwell Innovation Centre
77 Heyford Park
Upper Heyford
Oxfordshire
OX25 5HD
UK

Enquiries:

info@everestbiotech.com

Sales:

sales@everestbiotech.com

Tech support:

support@everestbiotech.com

Tel: +44 (0)1869 238326

www.everestbiotech.com

**Research Use Only. Not for
diagnostic or therapeutic use.**

EB11125 - Goat Anti-p75NTR / CD271 (aa202-215) Antibody

Size: 100µg specific antibody in 200µl



Target Protein

Principal Names: CD271, Gp80-LNGFR, low affinity nerve growth factor receptor, low affinity neurotrophin receptor p75NTR, low-affinity nerve growth factor receptor, nerve growth factor receptor, NGF receptor, OTTHUMP00000220319, p75 ICD, p75(NTR), p75NTR, TNFR superfamily, member 16, TNFRSF16, tumor necrosis factor receptor superfamily member 16, NGFR

Official Symbol: NGFR

Accession Number(s): NP_002498.1

Human GeneID(s): [4804](#)

Non-Human GeneID(s): 18053 (mouse), 24596 (rat)

Important Comments: This antibody is expected to recognize the extracellular domain of p75NTR.

Immunogen

Peptide with sequence C-PEGSDSTAPSTQEP, from the internal region of the protein sequence according to NP_002498.1.

Please note the [peptide](#) is available for sale.

Purification and Storage

Purified from goat serum by ammonium sulphate precipitation followed by antigen affinity chromatography using the immunizing peptide.

Supplied at 0.5 mg/ml in Tris saline, 0.02% sodium azide, pH7.3 with 0.5% bovine serum albumin.

Aliquot and store at -20°C. Minimize freezing and thawing.

Applications Tested

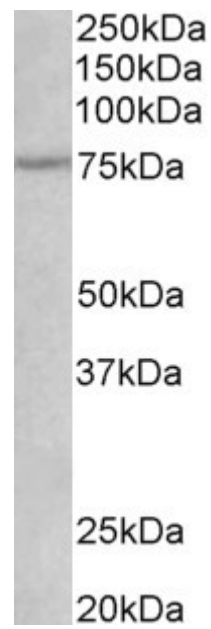
Peptide ELISA: antibody detection limit dilution 1:4000.

Western blot: Approx 75kDa band observed in Rat Heart lysates (calculated MW of 45.2kDa according to Human NP_002498.1 and 45.4kDa according to Rat NP_036742.2. The observed molecular weight corresponds to earlier findings in literature with different antibodies (Nykjaer et al, Curr Opin Neurobiol. 2005 Feb;15(1):49-57). Recommended concentration: 1-3µg/ml.

Species Reactivity

Tested: Rat

Expected from sequence similarity: Human, Rat, Pig, Cow



EB11125 (1 μ g/ml) staining of Rat Heart lysate (35 μ g protein in RIPA buffer). Primary incubation was 1 hour.
Detected by chemiluminescence.