

## UK Office

### Everest Biotech Ltd

Cherwell Innovation Centre  
77 Heyford Park  
Upper Heyford  
Oxfordshire  
OX25 5HD  
UK

Enquiries:

[info@everestbiotech.com](mailto:info@everestbiotech.com)

Sales:

[sales@everestbiotech.com](mailto:sales@everestbiotech.com)

Tech support:

[support@everestbiotech.com](mailto:support@everestbiotech.com)

Tel: +44 (0)1869 238326

[www.everestbiotech.com](http://www.everestbiotech.com)

**Research Use Only. Not for  
diagnostic or therapeutic use.**

## EB08653 - Goat Anti-OTUB1 Antibody

Size: 100µg specific antibody in 200µl



### Target Protein

**Principal Names:** OTUB1, OTU domain, ubiquitin aldehyde binding 1, FLJ20113, FLJ40710, HSPC263, MGC111158, MGC4584, OTB1, OTU1, OTU-domain Ubal-binding 1, otubain 1, ubiquitin-specific protease otubain 1

**Official Symbol:** OTUB1

**Accession Number(s):** NP\_060140.2

**Human GeneID(s):** [55611](#)

**Non-Human GeneID(s):** 107260 (mouse), 293705 (rat)

### Immunogen

Peptide with sequence C-YKEYAEDDNIYQQK, from the internal region of the protein sequence according to NP\_060140.2.

Please note the [peptide](#) is available for sale.

### Purification and Storage

Purified from goat serum by ammonium sulphate precipitation followed by antigen affinity chromatography using the immunizing peptide.

Supplied at 0.5 mg/ml in Tris saline, 0.02% sodium azide, pH7.3 with 0.5% bovine serum albumin.

Aliquot and store at -20°C. Minimize freezing and thawing.

### Applications Tested

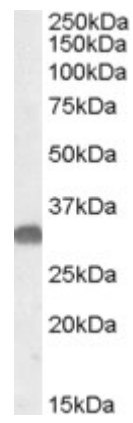
**Peptide ELISA:** antibody detection limit dilution 1:64000.

**Western blot:** Approx. 30kDa band observed in Mouse Brain lysates (calculated MW of 31.3kDa according to Human NP\_060140.2 and Mouse NP\_598911.1). Recommended concentration: 0.03-0.1µg/ml.

### Species Reactivity

**Tested:** Mouse

**Expected from sequence similarity:** Human, Mouse, Rat, Cow



EB08653 (0.05µg/ml) staining of Mouse Brain lysate (35µg protein in RIPA buffer). Primary incubation was 1 hour. Detected by chemiluminescence.