

UK Office

Everest Biotech Ltd

Cherwell Innovation Centre
77 Heyford Park
Upper Heyford
Oxfordshire
OX25 5HD
UK

Enquiries:

info@everestbiotech.com

Sales:

sales@everestbiotech.com

Tech support:

support@everestbiotech.com

Tel: +44 (0)1869 238326

www.everestbiotech.com

**Research Use Only. Not for
diagnostic or therapeutic use.**

EB06863 - Goat Anti-Orexin receptor 1 Antibody

Size: 100µg specific antibody in 200µl



Target Protein

Principal Names: HCRTR1, OX1R, hypocretin (orexin) receptor 1, orexin receptor, orexin receptor 1, orexin receptor-1, hypocretin receptor 1, hypocretin receptor-1

Official Symbol: HCRTR1

Accession Number(s): NP_001516.1

Human GeneID(s): [3061](#)

Immunogen

Peptide with sequence C-RNWKRPDQLGD, from the internal region of the protein sequence according to NP_001516.1.

Please note the [peptide](#) is available for sale.

Purification and Storage

Purified from goat serum by ammonium sulphate precipitation followed by antigen affinity chromatography using the immunizing peptide.

Supplied at 0.5 mg/ml in Tris saline, 0.02% sodium azide, pH7.3 with 0.5% bovine serum albumin.

Aliquot and store at -20°C. Minimize freezing and thawing.

Applications Tested

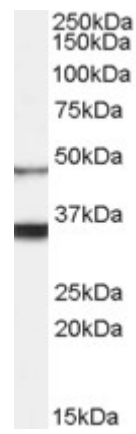
Peptide ELISA: antibody detection limit dilution 1:8000.

Western blot: Approx 48+35kDa band observed in Human Brain lysates (calculated MW of 47.5kDa according to NP_001516.1). The observed molecular weight corresponds to earlier findings in literature with different antibodies (Silveyra et al, Am J Physiol Endocrinol Metab. 2007 Oct;293(4):E977-85; PMID: 17638707). Recommended concentration: 0.1-0.3µg/ml.

Species Reactivity

Tested: Human

Expected from sequence similarity: Human, Mouse, Rat, Dog, Sheep



EB06863 (0.1µg/ml) staining of Human Brain lysate (35µg protein in RIPA buffer). Primary incubation was 1 hour. Detected by chemiluminescence.