

UK Office

Everest Biotech Ltd

Cherwell Innovation Centre
77 Heyford Park
Upper Heyford
Oxfordshire
OX25 5HD
UK

Enquiries:

info@everestbiotech.com

Sales:

sales@everestbiotech.com

Tech support:

support@everestbiotech.com

Tel: +44 (0)1869 238326

www.everestbiotech.com

**Research Use Only. Not for
diagnostic or therapeutic use.**

EB05064 - Goat Anti-ORC3L Antibody

Size: 100µg specific antibody in 200µl



Target Protein

Principal Names: ORC3L, origin recognition complex, subunit 3-like (yeast), LAT, ORC3, LATHEO, IMAGE50150, origin recognition complex, subunit 3 (yeast homolog)-like, OTTHUMP00000040611, homolog of latheo, Drosophila, RP3-486L4.1, origin recognition complex, subunit 3

Official Symbol: ORC3L

Accession Number(s): NP_862820.1; NP_036513.2

Human GeneID(s): [23595](#)

Important Comments: This antibody is expected to recognize both reported isoforms (NP_862820.1 and NP_036513.2).

Immunogen

Peptide with sequence QKTDHVARLTWGGC, from the C Terminus of the protein sequence according to NP_862820.1; NP_036513.2.

Please note the [peptide](#) is available for sale.

Purification and Storage

Purified from goat serum by ammonium sulphate precipitation followed by antigen affinity chromatography using the immunizing peptide.

Supplied at 0.5 mg/ml in Tris saline, 0.02% sodium azide, pH7.3 with 0.5% bovine serum albumin.

Aliquot and store at -20°C. Minimize freezing and thawing.

Applications Tested

Peptide ELISA: antibody detection limit dilution 1:32000.

Western blot: Approx 75kDa band observed in lysates of cell lines HepG2 and HeLa (calculated MW of 82.3kDa according to NP_862820.1 and NP_036513.2).

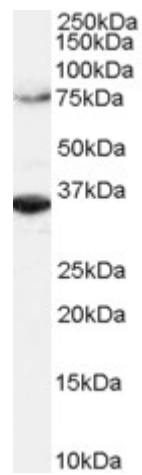
Recommended concentration: 1-3µg/ml. An additional band of unknown identity was also consistently observed at 35kDa. This band was successfully blocked by incubation with the immunising peptide.

IHC: Paraffin embedded Human Brain (Cortex). Recommended concentration: 3.75µg/ml.

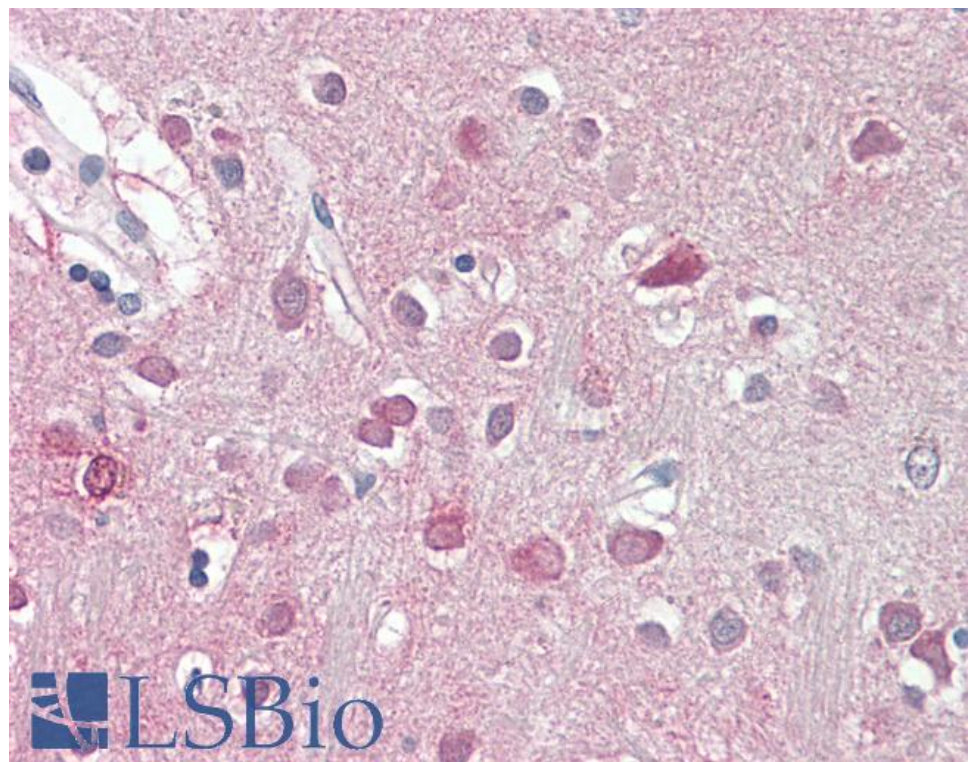
Species Reactivity

Tested: Human

Expected from sequence similarity: Human, Mouse, Rat, Dog, Cow



EB05064 (2µg/ml) staining of Hela lysate (RIPA buffer, 1.4E5 cells per lane). Detected by chemiluminescence.



EB05064 (3.75µg/ml) staining of paraffin embedded Human Cortex. Steamed antigen retrieval with citrate buffer pH 6, AP-staining.