

UK Office

Everest Biotech Ltd

Cherwell Innovation Centre
77 Heyford Park
Upper Heyford
Oxfordshire
OX25 5HD
UK

Enquiries:

info@everestbiotech.com

Sales:

sales@everestbiotech.com

Tech support:

support@everestbiotech.com

Tel: +44 (0)1869 238326

www.everestbiotech.com

**Research Use Only. Not for
diagnostic or therapeutic use.**

EB08365 - Goat Anti-NRAS Antibody

Size: 100µg specific antibody in 200µl



Target Protein

Principal Names: NRAS, neuroblastoma RAS viral (v-ras) oncogene homolog, N-ras, NRAS1, N-ras protein part 4, v-ras neuroblastoma RAS viral oncogene homolog

Official Symbol: NRAS

Accession Number(s): NP_002515.1

Human GeneID(s): [4893](#)

Non-Human GeneID(s): 18176 (mouse), 24605 (rat)

Immunogen

Peptide with sequence C-RMKKLNSDDGTQ, from the internal region of the protein sequence according to NP_002515.1.

Please note the [peptide](#) is available for sale.

Purification and Storage

Purified from goat serum by ammonium sulphate precipitation followed by antigen affinity chromatography using the immunizing peptide.

Supplied at 0.5 mg/ml in Tris saline, 0.02% sodium azide, pH7.3 with 0.5% bovine serum albumin.

Aliquot and store at -20°C. Minimize freezing and thawing.

Applications Tested

Peptide ELISA: antibody detection limit dilution 1:32000.

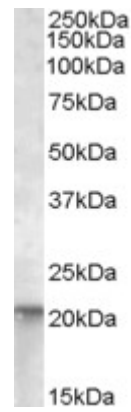
Western blot: Approx. 21kDa band observed in Human lysates of cell line A431 and of Rat Intestines (calculated MW of 21.2kDa according to NP_002515.1). Recommended concentration: 0.01-0.03µg/ml. Primary incubation was 1 hour. Preliminary testing was unsuccessful on NIH3T3 for this particular batch.

IHC: In paraffin embedded Human Small Intestine shows staining of cytoplasm and membrane of enterocytes. Recommended concentration: 2-3µg/ml.

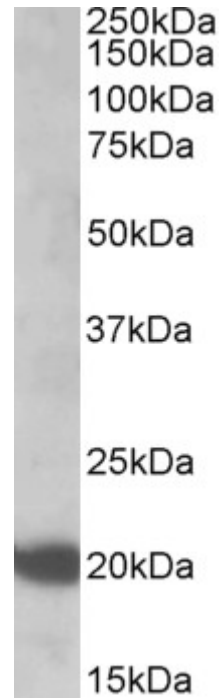
Species Reactivity

Tested: Human, Rat

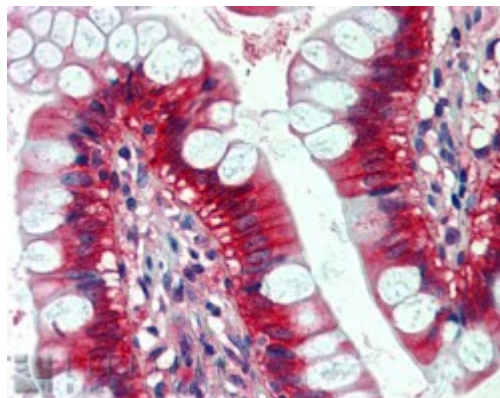
Expected from sequence similarity: Human, Mouse, Rat, Dog



EB08365 (0.01 μ g/ml) staining of A431 lysate (35 μ g protein in RIPA buffer). Detected by chemiluminescence.



EB08365 (0.1 μ g/ml) staining of Rat Intestines lysate (35 μ g protein in RIPA buffer). Primary incubation was 1 hour. Detected by chemiluminescence.



EB08365 (2.5 μ g/ml) staining of paraffin embedded Human Small Intestine. Steamed antigen retrieval with citrate buffer pH 6, AP-staining.