

## UK Office

### Everest Biotech Ltd

Cherwell Innovation Centre  
77 Heyford Park  
Upper Heyford  
Oxfordshire  
OX25 5HD  
UK

Enquiries:

[info@everestbiotech.com](mailto:info@everestbiotech.com)

Sales:

[sales@everestbiotech.com](mailto:sales@everestbiotech.com)

Tech support:

[support@everestbiotech.com](mailto:support@everestbiotech.com)

Tel: +44 (0)1869 238326

[www.everestbiotech.com](http://www.everestbiotech.com)

**Research Use Only. Not for  
diagnostic or therapeutic use.**

## EB09947 - Goat Anti-NPC2 Antibody

Size: 100µg specific antibody in 200µl



### Target Protein

**Principal Names:** EDDM1, epididymal protein 1, epididymal secretory protein, epididymal secretory protein E1, HE1, MGC1333, Niemann-Pick disease, type C2, NP-C2, tissue-specific secretory protein, NPC2

**Official Symbol:** NPC2

**Accession Number(s):** NP\_006423.1

**Human GeneID(s):** [10577](#)

### Immunogen

Peptide with sequence QAEPVQFKDCGSVD, from the internal region of the protein sequence according to NP\_006423.1.

Please note the [peptide](#) is available for sale.

### Purification and Storage

Purified from goat serum by ammonium sulphate precipitation followed by antigen affinity chromatography using the immunizing peptide.

Supplied at 0.5 mg/ml in Tris saline, 0.02% sodium azide, pH7.3 with 0.5% bovine serum albumin.

Aliquot and store at -20°C. Minimize freezing and thawing.

### Applications Tested

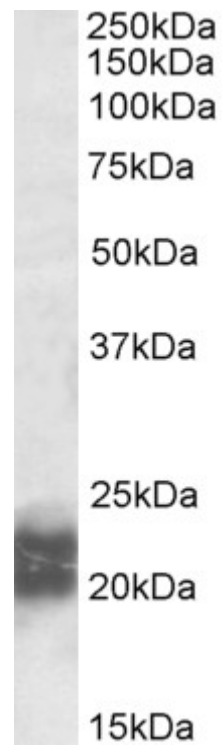
**Peptide ELISA:** antibody detection limit dilution 1:2000.

**Western blot:** Experiments gave bands at approx 20kDa and 23kDa in Human Testis lysates. These bands correspond to earlier findings in literature with different antibodies (Légaré et al, Mol Hum Reprod. 2006 Jul;12(7):461-8; PMID: 16772431. This protein has a calculated MW of 16.6kDa according to NP\_006423.1. Recommended concentration: 0.3-1µg/ml.

### Species Reactivity

**Tested:** Human

**Expected from sequence similarity:** Human



EB09947 (0.5µg/ml) staining of Human Testis lysate (35µg protein in RIPA buffer). Primary incubation was 1 hour. Detected by chemiluminescence.