



UK Office

Everest Biotech Ltd

Cherwell Innovation Centre
77 Heyford Park
Upper Heyford
Oxfordshire
OX25 5HD
UK

Enquiries:

info@everestbiotech.com

Sales:

sales@everestbiotech.com

Tech support:

support@everestbiotech.com

Tel: +44 (0)1869 238326

www.everestbiotech.com

**Research Use Only. Not for
diagnostic or therapeutic use.**

EB08106 - Goat Anti-NODAL Antibody

Size: 100µg specific antibody in 200µl



Target Protein

Principal Names: NODAL, nodal homolog (mouse), MGC138230, mouse nodal homolog precursor, nodal, mouse, homolog

Official Symbol: NODAL

Accession Number(s): NP_060525.2

Human GeneID(s): [4838](#)

Non-Human GeneID(s): 18119 (mouse)

Immunogen

Peptide with sequence ECPNPVGEEFH, from the internal region of the protein sequence according to NP_060525.2.

Please note the [peptide](#) is available for sale.

Purification and Storage

Purified from goat serum by ammonium sulphate precipitation followed by antigen affinity chromatography using the immunizing peptide.

Supplied at 0.5 mg/ml in Tris saline, 0.02% sodium azide, pH7.3 with 0.5% bovine serum albumin.

Aliquot and store at -20°C. Minimize freezing and thawing.

Applications Tested

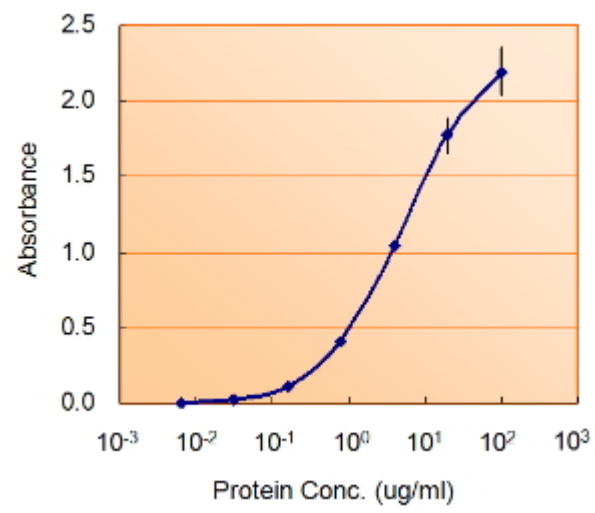
Peptide ELISA: antibody detection limit dilution 1:8000.

Enzyme immunoassay: Sandwich-type ELISA with increasing amount of recombinant NODAL captured by a rabbit antibody. Recommended reporter concentration: 1-2ug/ml

Species Reactivity

Tested: Human

Expected from sequence similarity: Human, Mouse, Rat



EB08106 (1.5ug/ml) as the reporter with EB002007 as the capture rabbit antibody (5ug/ml).